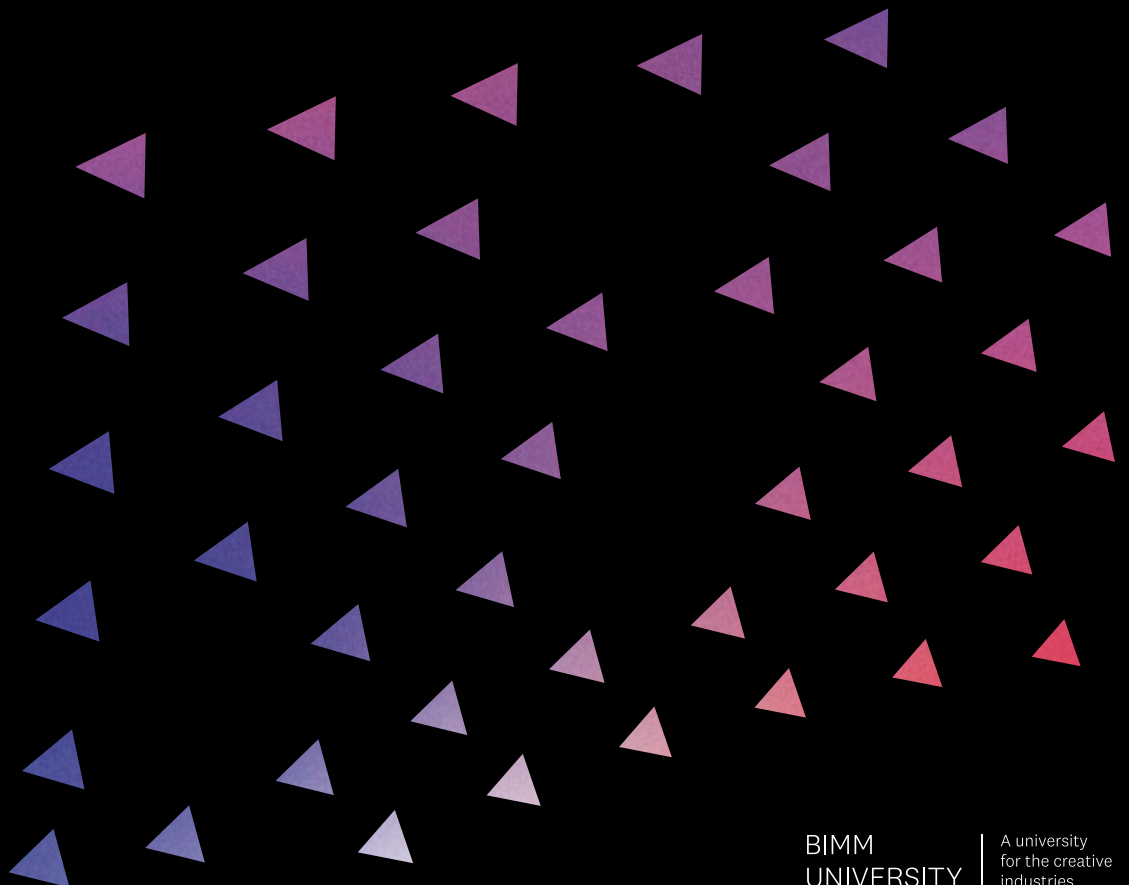




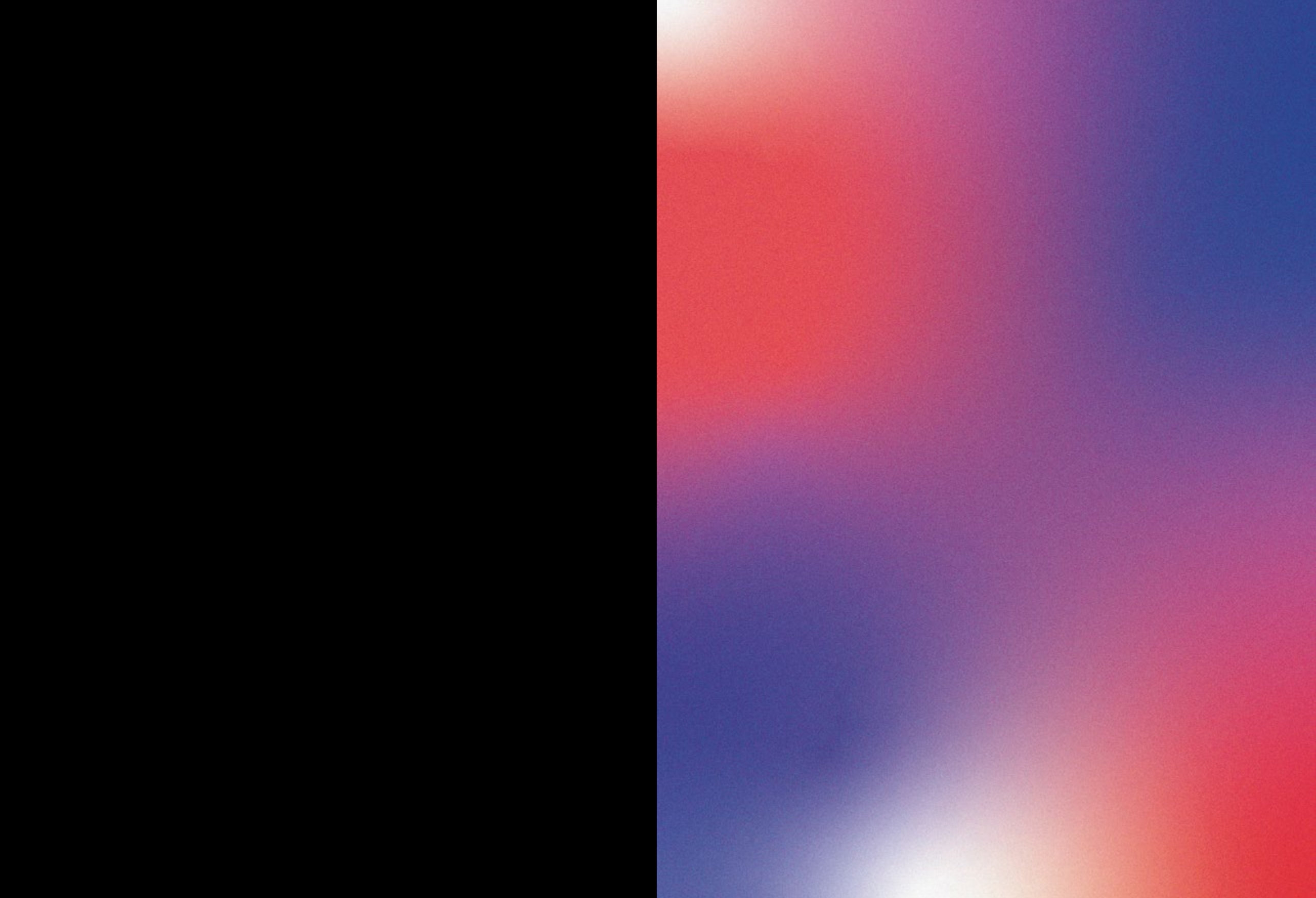
BIMM  
INSTITUTE

PROSPECTUS 23/24



BIMM  
UNIVERSITY

A university  
for the creative  
industries



# A university for the creative industries

BIMM  
UNIVERSITY | A university  
for the creative  
industries

Welcome to BIMM Institute, part of BIMM University. As a University, we provide an extensive range of courses in modern music, performing arts, and filmmaking to over 9,000 students across 15 colleges in the UK, Ireland, and Germany. We have a long-standing commitment to providing the highest quality in creative arts education, allowing students to maximise their career potential.

For 40 years, we've equipped our students with the knowledge and skills they need to meet the demands of the creative industries – and graduate feeling industry-ready. Beyond academic life, BIMM University offers a community built on a shared passion, creativity, and belief system. Our inclusive culture is at the core of everything that we do, binding us together and driving us forwards.

## Our purpose and vision

### Purpose

To inspire the next generation of industry professionals through the creation of inclusive and creative learning environments that remove barriers and create opportunities for equal participation in the creative industries.

### Vision

To provide the highest standard of industry-led education built on a foundation of collaboration, inclusivity and an entrepreneurial spirit; to prepare our students for a sustainable career within the creative industries.

## Our colleges and institutes

As a BIMM University student, you'll benefit from a range of unique collaborative opportunities across music, film and performing arts, developing skills you will take into your future creative careers.

BIMM University is made up of 5 acclaimed colleges:



### BIMM Institute

BIMM opens the doors to the music industry. We encourage creative freedom, provide real-world industry experiences, and build a community across our eight campuses in the UK, Ireland and Germany. BIMM Institute music courses equip you with the best tools and expertise required to develop a fulfilling and sustainable music industry career.



### Institute for Contemporary Theatre

ICTheatre is at the cutting edge of performing arts training, delivering unique pathways and industry-relevant diploma and degree courses in Brighton and Manchester. We don't just expect our students to get work – we want you to create your own, so all training is underpinned by entrepreneurship. Individuality is key – at ICTheatre we see you.



### Screen and Film School

At Screen and Film School, we invite you to unleash your creativity, be inspired and become industry-ready in a dedicated community where if you have a vision, you can make a scene. We have three exceptional schools in the creative hubs of Birmingham, Brighton and Manchester – making us a mighty force in the UK film and media world.



### Performers College

Established over 30 years ago, Performers College offers elite performing arts training. At our two campuses in Birmingham and Essex, we have the expertise to ensure that students embrace their individuality, fulfil their ambitions and reach their potential. Our diverse student destinations speak for themselves, this really is 'the place to be'.



### Northern Ballet School

Northern Ballet School is an international centre of excellence in training for classical ballet and musical theatre. Everyone here works together to help our students become the performers the global theatre-dance industry demands: artistically accomplished, technically skilled, well-educated and confident.



# Contents

---

Who we are	9
Our industry partnerships	10
Music Made Us	12
Hyperpop: A genre-bending future	14
<b>Our network</b>	<b>18</b>
Masterclasses	20
Lecturers	24
Award-winning alumni	28
<b>Our cities</b>	<b>36</b>
Brighton	38
London	44
Bristol	50
Manchester	56
Birmingham	62
Higher Education College Transfer Scheme	68
<b>College life</b>	<b>72</b>
Student wellbeing	75
Access and participation	77
Gigs and events	79
Work experience and opportunities	81
Career and recruitment initiatives	83
Student Association	85
BIMM Connect	87
Meet the students	88
<b>Our courses</b>	<b>96</b>
The BIMM Institute graduate	99
Undergraduate courses	101
Postgraduate courses	117
<b>How to apply</b>	<b>124</b>
Open days	126
The application process	128
International applications	130
Fees and finance	134
Join our community	138
Contact information	140







## Who we are

---

**BIMM Institute is a community. It's where creative people belong. With 40 years' experience in delivering education in the music sector, we know how and where to open doors to your future.**

You bring the talent and the energy, we'll help you build a network that you can build a career on. But don't take our word for it! Just consider the list of prolific alumni that have walked through our doors: Fontaines D.C., IDLES, Ella Mai, Gemma Bradley, Natasha Bent, George Ezra and others. These musicians are now at the forefront of an ever-evolving industry. And there's room for you too.

From day one, you'll join our thriving creative environment. Our renowned lecturers are all active in the industry and boast a wealth of experience that feeds into your academic studies. Alongside your lectures and tutorials, we put on a range of masterclasses with industry giants every year – so you get to hear directly from the people you most admire.

You'll have access to industry-standard facilities, countless professional connections and unrivalled work experience opportunities at the biggest festivals, labels and companies in the country. Our wide network of colleges also provides unique opportunities for you to collaborate with others working in music, performing arts, and film.

But university is about more than your course. Every city where BIMM is located has a vibrant music scene bursting with venues, talent and opportunities. By joining us, you'll not only be connected to the local scene, you'll also make friends for life, be exposed to new creative communities, join many clubs and so much more.

Your music career starts here. Are you ready?

# Our industry partnerships

Industry engagement is at the centre of everything we do. At BIMM Institute, you'll find unparalleled industry connections everywhere you turn and a vast range of work experience and industry placements that give you exposure to influential events and people.

Check out some of our best partnerships and opportunities.



Since 2014, BIMM has been a key partner at 2000trees, running The Forest Sessions stage every year. We facilitate performances on this stage for 25 BIMM acts (from all our UK college locations), who get to play among more established acts such as Enter Shikari, The XCERTS, Frank Carter and many more.

Our live sound, production and event management students also take on roles including artist liaison, stage management, sound, backline tech, monitors and more, whilst being supervised and trained by professionals. These students are chosen from across the different BIMM colleges so it is a great way for students from different BIMM locations to meet, collaborate and work together.



Our partnership with DIY Magazine spans many years. More recently, DIY offered journalism students exclusive internships to celebrate our Music Made Us project. These internships provided students with insightful mentoring sessions from DIY's editorial team, the opportunity to interview artists, and the chance to be published in the pages of the magazine.

As well as the journalism internships, BIMM students get to perform at DIY's 'Class of...' show each year. It's not only a fantastic performance opportunity for the bands but also provides work experience in other areas. Several students get involved in the management of the event and even interview the acts. It's a treat we look forward to each year.



Our connections with Spotify are multi-faceted and exciting. Spotify take part in our music industry recruitment fairs, WRKiT North and WRKiT South, giving students a chance to hear about what the company offers and to introduce themselves. They are also a regular in our masterclass schedule, popping in to talk to students about the industry.

In 2021, we announced the start of an educational partnership with Spotify. This partnership enables us to offer Diversity & Inclusion Scholarships to applicants from backgrounds that are underrepresented in higher education. Recipients of the scholarship have their fees fully funded for their degree and also benefit from mentoring sessions with Spotify executives.

More recently, Spotify have given BIMM students access to their London recording studio, Noteable Studios, based in the famous Metropolis building. Regular monthly slots are available for BIMM students to book, so they can undertake projects in a professional studio environment.



Our partnership with ATC reflects our commitment to providing students with incredible, real-world industry experiences by working with the best in the business. Our partnership involves offering A&R internships as part of the exclusive A&R Student Talent Scout Programme. There are 11 internships available across all BIMM locations each year.

Students gain valuable A&R experience during a three-month internship while furthering their artist development and research skills. All interns liaise directly with ATC's core A&R teams and managers, take part in educational sessions, and receive mentorship through management meetings and breakout listening sessions.



Once a year, the UK's buzzing music industry gets away from its offices and moves down to Brighton for the weekend. The result is The Great Escape festival. Likened to Texas' SXSW, the multi-venue festival brings thousands of performers and industry folk to the shores, along with networking opportunities and exciting conferences. As The Great Escape's lead education partner, we are able to provide dozens of opportunities to students and graduates every year.

In 2022, 150 students from all BIMM campuses gained work experience at The Great Escape. They helped out with stage managing, venue assisting, event control, live sound, plus lots more! The Great Escape is a fantastic way for students to network with the industry and gain that critical experience that stands out on a CV.



\_\_\_\_\_

## Who would you be without music?

Here at BIMM Institute, we truly believe that music can affect our world, our everyday lives – and our very essence. It has the power to make positive changes, push boundaries, connect communities and transform us as individuals.

Our Music Made Us project explores, discusses and celebrates what music means to people, how it has impacted our world – and how it has made us who we are today. Students, graduates, journalists, industry experts and passionate people tell us what music means to them through personal stories, photographic diaries, long-read articles and Sub\_Terrain, our unique YouTube series.

Read, listen and watch at  
[bimm.ac.uk/musicmadeus](http://bimm.ac.uk/musicmadeus)





# Hyperpop: A genre-bending future

**As part of our Music Made Us project, creatives, music professionals, experts and journalists reflect on how music has been there for us through the good times and the tumultuous periods that inspire change. Here, James Mellen, one of our highly talented Music Marketing, Media and Communications students from Bristol, dives into a young genre and explores its impact on mainstream music and how it is managing to penetrate a saturated market.**

Typing 'has music got worse' into Google gives you 51 million results in half a second. There are endless articles analysing why modern music is 'bad' and even more Facebook comments claiming 'music was better in my day!' and 'these kids are copying the bands that came before them!' But is it true? Has music run out of ideas? Are we in an endless cycle of nostalgia and recycling, or is true musical innovation possible in 2022?

In short, it depends where you look.

For years, recycled songs have dominated the mainstream, with the same crop of producers and songwriters getting passed around to the biggest stars. Pop music is also a genre that follows trends, so copying and imitating other artists is what sells records, the main prerogative of record labels. In recent years the biggest 'trend' has been an emulation of the 1980s. Most of the time, influence in music is subtle, with gentle nods to artists' heroes as a tribute rather than imitation. However, this 80s wave that tore through the charts was simply a rebrand and redesign of the synthpop that is so synonymous with the period.

Bands like The 1975 have used retro synth basses, saxophone solos and Tears for Fears-esque instrumentals, and US pop trio LANY have vintage sounds across the entirety of their new record. Dua Lipa and The Weeknd, two of the world's most loved stars of recent times, channelled 80s-synthesiser-fun with their most recent records, *Future Nostalgia*

and *After Hours*, respectively. Both albums are meticulously crafted, well-produced pop records, but displaying a sound that has been around for over 40 years is hardly groundbreaking or original. So, what's new?

Arguably one of the most polarising genres of recent times is hyperpop. The name is loose but describes the maximalist take on generic popular music. It combines elements of a multitude of genres, mainly electronic, hip hop and dance music. The music is rich with auto-tuned and pitch-shifted vocals and heavy, jarring distortion but, like pop music, capitalises on catchy choruses, short runtimes, and shiny aesthetics. While to some, hyperpop feels like nothing more than a parody, the genre could potentially become the countercultural sound of the 2020s.

Hyperpop is a product of the internet. The digitised and pixelated sounds are self-referential to the genre's birth, and it reflects the digital world it dominates. The lack of sonic boundaries makes the genre so alluring to artists and consumers alike. Hyperpop also feels like a full-circle moment; many artists dominating the scene pull inspiration from sounds of their youth. But due to the digitisation and extreme production styles, it does not give out nostalgic value. Metal subgenres like nu-metal and crunkcore are audible in tracks from artists like Dorian Electra, and this melting pot of genres, with a millennial, digital twist, is what is making it hold its own. Though hyperpop is trying to break into the mainstream, it remains an alternative genre at heart – much like its influences.







One of the pioneers of the microgenre is A.G. Cook – founder of PC Music. Since the label’s inception, Cook has collaborated with artists like Hannah Diamond, SOPHIE, Danny L Harle and most notably Charli XCX. Over the course of six weeks during the first lockdown back in 2020, Cook helped create Charli XCX’s isolation album *How I’m feeling Now*, which went on to be nominated for the Mercury Music Prize. Though Charli is now a bonafide popstar with hits under her belt like ‘1999’, ‘Boys’ and ‘Boom Clap’, she continues to rework the traditional pop sound to her taste and is potentially creating avenues for hyperpop artists to sneak into the mainstream. Charli also featured on hyperpop superstars 100 geecs’ remix of their hit track ‘Ringtone’, along with Kero Kero Bonito and Rico Nasty – the latter of which is incorporating hyperpop elements into her own music, like the Dylan Brady (100 geecs)-produced ‘iPhone’.

Another factor pushing hyperpop forward is inclusivity. Many key figures in hyperpop identify as transgender, non-binary or gay. A leading figure in the PC Music and hyperpop sound SOPHIE (who sadly passed away in 2021) uses her music to discuss her experiences as a trans woman; Charli XCX is a famously outspoken ally of the LGBTQ+ community, and Dorian Electra uses they/them pronouns and worked with Refinery29 on a series of music videos on queer history and intersectional feminism. It is becoming more and more common to see LGBTQ+ artists in the music mainstream, but the communities around hyperpop are a much safer space than the comment section on a Facebook post about Harry Styles wearing a dress.

Aside from being its own entity, hyperpop could also be inspiring creatives from all disciplines and genres. The ‘think as far outside of the box as possible’ ethos of the wacky internet genre is a mantra that can be applied to any genre or creative outlet. By simply combining different genres, an artist can instantly make themselves stand out from the saturated market – and people are beginning to do so.

Hyperpop is the amalgamation of different genres, but unlike music found in the mainstream, it does not rely on nostalgic value. The current charts are laden with sombre ballads, viral TikTok tracks and the same artists who were dominating ten years ago. Some music here is great, but it all feels so safe. Hyperpop feels like the first genre or movement in a long time to create its own lane and remain thriving. However, saying hyperpop is the future is a bold statement. Due to the maximalist aesthetic, it is not the most accessible genre, but one cannot deny its originality. Obviously, hyperpop takes influence from things that have come before, but in terms of a current music movement that is slowly breaking into the mainstream, nothing can rival hyperpop and its potential influence on all types of music and art.



# Our network

---

Joining BIMM Institute means connecting with industry giants, prolific lecturers and incredible alumni.





# Masterclasses

We have some of the music industry's most prolific names at our fingertips. Plus, we have the connections to get them in front of you at our legendary and exclusive masterclasses.

Prestigious performers, producers, promoters and music professionals give our students expert advice and crucial insider insights that you won't find anywhere else.

You'll experience live demonstrations, Q&A sessions and even surprise live performances from global industry icons, current chart-toppers and the names who have made it big.

[bimm.ac.uk/masterclasses](http://bimm.ac.uk/masterclasses)

*"Make music your language, so when you press play, you have the confidence to say: Stormzy, I've got beats."*

**STORMZY**



*"[When making 'Let's Dance' with Bowie], I said: 'David, did I make it too funky?' And he went: 'Nile. Is there such a thing?' That is the best answer ever."*

**Nile Rodgers**



*"People think nowadays all you've got to do is put out some killer tweets, and things will start happening for them. But you've got to establish something first. You've got to make absolutely amazing music."*

**Four Tet**





*"[Each Glastonbury], we're all working towards something better and more magnificent."*

**Michael Eavis**

*"Write what you like, don't be sentimental about your mistakes, and follow your infatuations. Give yourself a brief and go for it."*

**IDLES**



*"I'm excited about the potential of being able to figure out how to help our music industry and a future music ecosystem that's sustainable."*

**Imogen Heap**



*"You do just have to write how you feel at the time. I think happiness is as strong a feeling as sadness, so you should indulge in both if you're getting creative with it."*

**Lianne La Havas**



# Lecturers

---



**Jim Coles**  
**Music Production**  
**BIMM Institute Bristol**

Jim is a music producer, DJ, radio host, mix engineer and keen gardener. His work focuses on bass music and sound system culture. He has released records on various labels including Metalheadz, Terrorhythm, Ninja Tune, Tectonic, All City and many more.

Jim is a noted pioneer in musical cross-pollination, particularly due to his work as 'Philip D Kick' which spawned a global movement of what became known as 'Jungle Footwork', as well as his more recent work in the field of acid-dub, which led to his best-selling *Acid Dub Studies* LP in 2021.

As a DJ, Jim has toured the world playing in over 30 countries.



**Tom Longworth**  
**Guitar**  
**BIMM Institute Birmingham**

Tom has worked as a session guitarist with many artists spanning various genres, but is best known for his work with British pop legend Robbie Williams. In 2018, he performed at the opening of the FIFA World Cup in Russia with Robbie.

Other artists Tom has worked with include Jamie Scott, Natalie Imbruglia, Charlotte Church, Ben's Brother and Gabrielle Aplin.

Alongside lecturing at BIMM Institute Birmingham, Tom splits his time between touring with Robbie Williams, and writing and recording in the studio.



**Phil Short**  
**Guitar**  
**BIMM Institute London**

Phil Short teaches guitar at BIMM Institute London. In 2016 Phil took 1st place in the prestigious international 'Guitar Idol' competition, earning him recognition as one of the worlds most promising rising guitar talents. As an industry acknowledged educator, Phil writes instructional DVDs for LickLibrary.com and is a regular contributor to Guitar Interactive Magazine and Guitar Techniques Magazine.

Alongside his educational work, Phil is a proactive session musician, touring with some of the world's biggest pop acts including artists like Chipmunk, Tyler James and Westlife.



**Lily Batten**  
**Music Marketing, Media and Communication**  
**BIMM Institute Bristol**

Lily has worked in music PR for ten years (both agency and freelance). After graduating from the University of Bristol with a Master's in Marketing Management with distinction, Lily secured a job in music PR for Decca (Universal Music Group).

In her career so far, Lily has worked on campaigns for Diana Ross, Moby, Tiësto, Jess Glynne, The Lumineers and more. Alongside this, she has taught various modules at BIMM, written for multiple publications, performs in a gigging vocal collective and continues to run her own alternative performance company.



**Hazel Mills**  
**Performance, Songwriting**  
**BIMM Institute Bristol**

Hazel Mills is a Bristol-based musician/songwriter whose work spans multiple genres and who has toured the globe with artists such as Florence + The Machine, Goldfrapp, Birdy, The Will Gregory Moog Ensemble, and The Paper Cinema. Her classical background, pop sensibilities and passion for 1960s American minimalism and analogue synths feed into both her performance and her writing.

Alongside touring commitments, Hazel has been writing material for her own project, Violaine, with long-term collaborator and producer/musician TJ Allen (Bat For Lashes, Portishead, Anna Calvi), drawing influence from Musique Concrete, 80s pop, and the music of Japanese pianist Ryuichi Sakamoto.



**Sigi Mwasote**  
**Vocals**  
**BIMM Institute Brighton**

Sigi is a Kenyan-Tanzanian singer, performer and choir director with a wealth of experience leading vocal workshops and choirs. Her unique style of working enables students to overcome any obstacles and reach their full potential.

Sigi runs Spring into Soul, her community choir that made it to the final of the BBC's Songs of Praise, Gospel Choir of the Year competition in 2018. She also fronts her band Lakuta. The band draw on influences from jazz, funk, soul and tropical music. The band are signed to Brighton label Tru Thoughts. They are, and continue to be, regulars on the festival scene, both in the UK and abroad.



**Elliot May**  
**Vocals**  
**BIMM Institute Brighton**

Elliot has been in many bands since the 1980s, both as a lead singer and a backing vocalist.

She has worked with artists such as The Brand New Heavies, Stan Campbell and Gavin Rossdale.

Perhaps her most well-known track as lead vocalist is on 'Do Your Thing' by Basement Jaxx, which reached no.24 in the UK charts in 2005. Her vast body of work includes BBC Radio 2, idents for The Jonathan Ross Show and many other advertisements worldwide.



**Collette Williams**  
**Drums/Music Business**  
**BIMM Institute Birmingham**

Collette is a session drummer, multi-instrumentalist and artist with over ten years' experience with some of the world's biggest artists and record labels, including Sony and Syco.

Alongside session playing, Collette's band Rews were the first full signing to Marshall Records in 2017. Mark Radcliffe (BBC Radio 6 Music) named them as his Glastonbury highlight. Music Radar also selected Collette as one of their '10 best new drummers in the world right now'.



**Rebecca Pickles**  
**Event Management**  
**BIMM Institute Manchester**

Rebecca is our Event Management Course Leader. She has achieved two Top 40 UK hits, a Billboard Top 5 and a Top 10 in Japan with girl group The Pipettes. She's toured extensively worldwide and has played numerous festivals, including the Pyramid Stage at Glastonbury and the main stage at Reading/Leeds.

Rebecca has extensive event management experience having worked as a venue and event manager at music venues in both Brighton and Manchester (and winning awards for her management skills). Today, she manages outdoor events, working on arts and music festivals around the UK. She also still performs live with new project See Thru Hands.



**Alice James**  
**Event Management**  
**BIMM Institute London**

Currently Head of Production at AEG Presents UK and director of her own production company, Alice has had a varied international career spanning technical production, tour management and stage management.

Across venues, festivals and TV productions she has worked on Live at the Apollo, Reading, Latitude, SXSW, The Mercury Music Prize, Lovebox, Wilderness and Britain's Got Talent among many others. She has worked in event production and operations for over a decade, more recently becoming involved in event sustainability as a UK ambassador for AEG's global programme 1Earth.



**Rachel Meadows**  
**Vocals**  
**BIMM Institute Brighton**

Rachel is an experienced session vocalist who currently sings backing vocals for 80s synth-pop band Heaven 17.

She has performed with a diverse range of artists at festivals and gigs across the world. These have included Glen Matlock (Sex Pistols), Shingai Shoniwa (The Noisettes) and Peter Hook (Joy Division/New Order) as well as providing tour support for Beverley Knight and Mercury Prize-winner Speech Debelle.

Rachel also works as a vocal coach holding a PGCert in Professional Practice.



**Femi Temowo**  
**Guitar**  
**BIMM Institute London**

Described by Time Out as "one of Europe's finest and most sought-after guitarists", Femi is a MOBO Award-winner and one of the UK's most original musicians.

Inspired by the likes of Miles Davis and legendary jazz guitarist Wes Montgomery, Femi came to the attention of the music world when Soweto Kinch asked him to join his quartet. A Mercury Music Prize nomination soon followed, as did MOBO Awards and a BBC Jazz Award for best new band.

Femi has had great success as a solo artist, working as Amy Winehouse's musical director and guitarist, as well as playing with the likes of Courtney Pine, The Roots and George Benson.



# Award-winning alumni

---

## **The people who inspire you now once stood in your shoes.**

For 40 years, we've prepared students for a bright future in the music industry. Grammy and BRIT Award winners, Mercury Prize-nominated artists, agency heads, songwriters, international booking agents and many more have walked into our colleges and out into a fulfilling career.

We're proud to have some of the industry's most successful professionals among our alumni. And we're excited to help you become one of them.



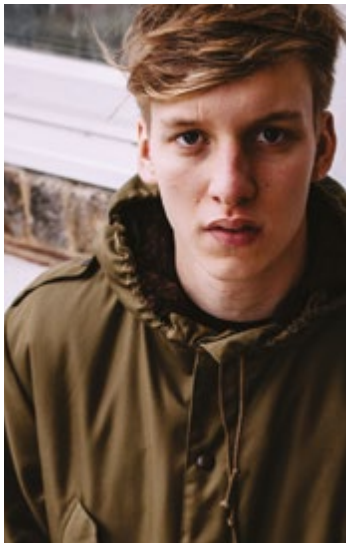
# Award-winning alumni



**Ella Mai**  
Grammy Award-winning Ella Mai relocated to LA after leaving BIMM Institute London. In LA, she secured a tour support slot with 11-time Grammy Award-winner Bruno Mars.

She also set a new record by becoming the first British artist in 26 years to score a no.1 single on the US R&B chart with her multi-platinum single 'Boo'd Up'. In 2019, the hit single was nominated for two Grammy Awards, Song of the Year and Best R&B Song, with the track winning the latter.

In 2020, Ella released the single 'Not Another Love Song', which peaked at no.9 in the US R&B charts.



**George Ezra**  
George Ezra joined BIMM Institute Bristol in October 2011 to study songwriting. Less than a year later, he signed to Columbia Records and inked a publishing deal with BMG/Chrysalis.

2015 saw George nominated for an astonishing four BRIT Awards: British Breakthrough Act, Album Of The Year, Single Of The Year (for 'Budapest') and Male Solo Artist. George gave a brilliant performance of his single 'Budapest' at the BRIT Awards to a packed crowd at the O2 arena in London.

Ezra's third studio album, *Gold Rush Kid*, was released in June 2022 on Columbia.



**Fontaines D.C.**  
Shortly after graduating from BIMM Institute Dublin, Fontaines D.C. signed with the highly revered Partisan Records. The band's debut LP *Dogrel* was released to critical acclaim in April of 2019, reaching no.4 in the Irish album chart and no.9 in the UK. Later that year it was selected as Album Of The Year by Rough Trade and BBC 6 Music.

Their second studio album, *A Hero's Death*, entered the UK and Irish album charts at no.2 and in April 2022, their third album, *Skinty Fia*, soared to number 1 in the Official Album Charts in the UK and Ireland. This band is unstoppable!



**Black Honey**  
Black Honey formed at BIMM Institute Brighton and are made up of lead singer and guitarist Izzy Baxter Phillips, guitarist Chris Ostler, bassist Tommy Taylor, and drummer Alex Woodward.

A four-piece indie rock band, they have embarked on several UK tours and their eponymous debut album entered the top 40 in its first week of release.

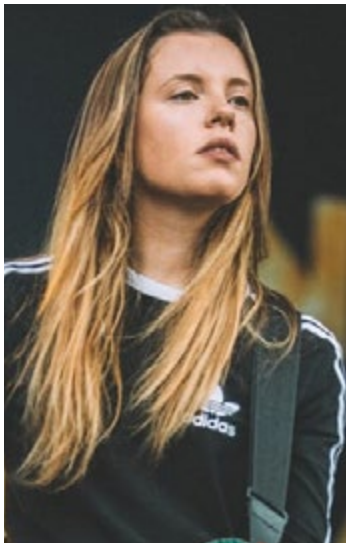
With their sophomore album, *Written and Directed*, the band stormed the charts and secured the no.7 spot in the UK Official Albums Chart. Not only that, but they also secured the no.1 spot in the Independent Artists chart.



**Natasha Bent**  
Graduating from BIMM Institute Brighton's vocal course, Natasha's first steps into the music industry were as a backing singer for Carleen Anderson. Now she runs an artist management and live agency, Mother Artists.

She went on to create her own company, The Village Agency. Soon afterwards, she moved to the Agency Group in London, where she helped manage the careers of Foals, Amy Macdonald and CHVRCHES, as well as breakthrough acts Ry X, Tom Misch and Youngr.

Natasha's name was included in Music Week's Women in Music Roll of Honour, which highlights a dozen of the music business' most important and influential female executives from across every sector of the music industry.

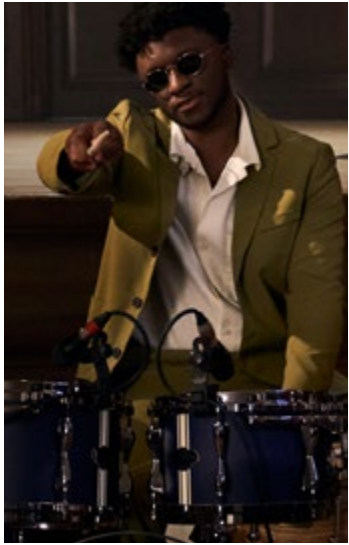


**Isabel Torres**  
BIMM Institute London graduate Isabel is a session guitarist and educator. One of her main session roles is as a touring guitarist with songwriter and Columbia signee Declan McKenna.

Her exceptional guitar playing had earned her performance experiences on various Portuguese television channels such as Porto Canal, TVI, RTP and SIC.

Her performance experience in the UK includes appearances on Later...With Jools Holland, BBC Live Lounge, Maida Vale, VEVO and the NME Awards and most recently, a performance on The Ellen Show playing the guitar for fellow BIMM student graduate Mimi Webb. She has also appeared on some of the biggest festival stages around, including Glastonbury, Lollapalooza and SummerSonic.





#### Emanuel J Burton

Emanuel is making waves as a solo drummer, musical director, creative entrepreneur, bandleader and songwriter. He relishes infusing spoken word and storytelling through the drums. Emanuel has showcased this at AO Arena, Sports Relief, BBC 6 Music, Ronnie Scott's Jazz Club, We Out Here Festival, and a headline slot at world-renowned Band on the Wall.

Emanuel has toured and collaborated with Little Simz, FKJ, Tom Misch, Misha B, and Pip Millett. While at BIMM Institute Manchester, he teamed up with world-class musicians and ran masterclasses, private clinics and jam sessions for Brian Frasier-Moore (Justin Timberlake's drummer), Rico Nichols (Kendrick Lamar's drummer) and more.



#### Gemma Bradley

Gemma is a pop and R&B vocalist and radio host. She was crowned the winner of Dublin's Christie Hennessy Songwriting Prize in 2018.

Gemma received lots of love from national radio, such as BBC Introducing, BBC 6 Music, RTE Radio 1, and even spins across the pond on WPPM in Philadelphia. She was also part of Ireland Music Week's Online Showcase 2020.

After less than a year presenting on BBC Radio Ulster, Gemma replaced Huw Stephens in the BBC Radio 1 family, presenting the esteemed BBC Introducing show on Sunday nights.

Gemma says: "BIMM Institute really helped shape me as a musician and as a young creative. I believe I wouldn't be where I am now if I hadn't attended."



#### Mimi Webb

Mimi attended BIMM Institute Brighton and has done amazingly well in her career so far. Her debut single 'Before I Go' was used by one of the biggest TikTok influencers on the planet, Charli D'Amelio, who shared the song with her 111.3 million followers. Since then, Mimi has signed with Epic Records, gathered an immense 85 million Spotify streams, radio play worldwide, and most recently, a Top 10 chart position in the UK Singles Chart with 'Good Without'.

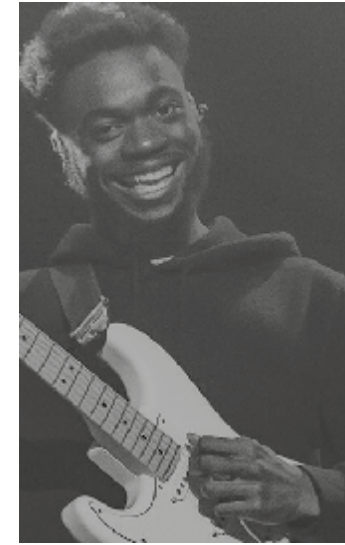
Mimi performed her latest single on The Ellen Show with BIMM Institute London guitar graduate Isabel Torres. Her previous single, 'Before I Go', was co-written by BIMM Institute Brighton songwriting graduate Sam Merrifield, who has written toplines for Westlife, Gorgon City, James Capaldi, and loads more.



#### Patrick McNaught

Event Management graduate Patrick is the creator of Washed Out Festival: a two-day, multi-venue underground punk, indie, emo and hardcore music festival in the centre of Brighton. The festival does everything in-house, including design, social media and marketing campaigns, website design, and bookings and logistics. Patrick's work on the festival led to him being awarded the BIMM Institute Brighton Enterprise and Business award in 2018.

Reflecting on his time at BIMM, Patrick says: "Studying at BIMM Institute gave me the skills and support needed to harness my passion for event management into a dream job. The Event Management degree has allowed me to take my events from an amateur level to a professional standard."



#### Gaetan Judd

BIMM Institute London graduate Gaetan Judd has already worked with artists like Samm Henshaw, Ray BLK and Burna Boy (to name just a few) and has performed on Later... With Jools Holland.

Gaetan is a talented guitarist, songwriter and producer. He found his vocation when playing in church and is inspired by R&B, gospel and African influences.

Gaetan's first professional gig was with singer/songwriter Samm Henshaw (who's been chosen by James Bay and Chance The Rapper to tour with them). Since he pandemic, Gaetan has been busy grafting in the studio, producing and writing new songs. He's also worked on Henshaw's 2022 album, *Untidy Soul*.



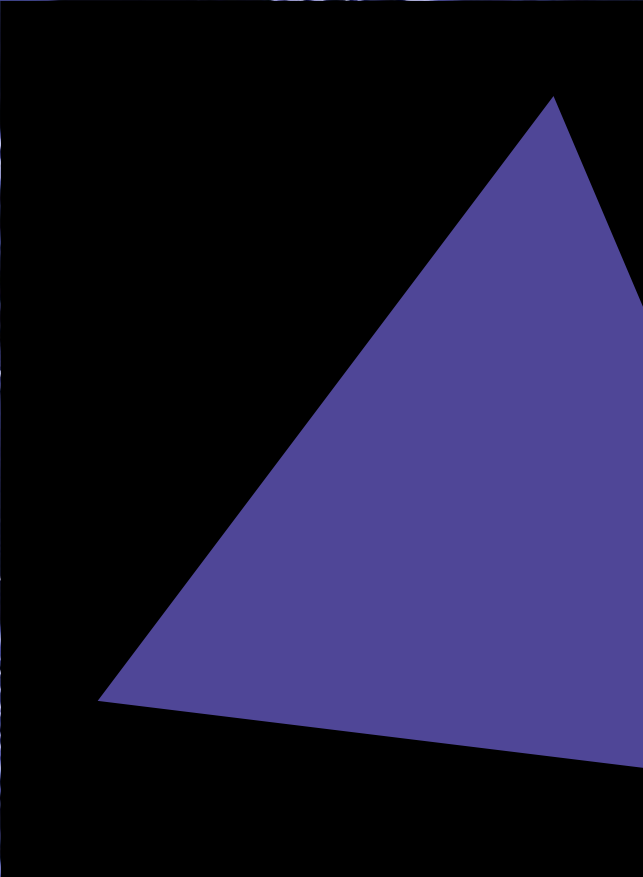
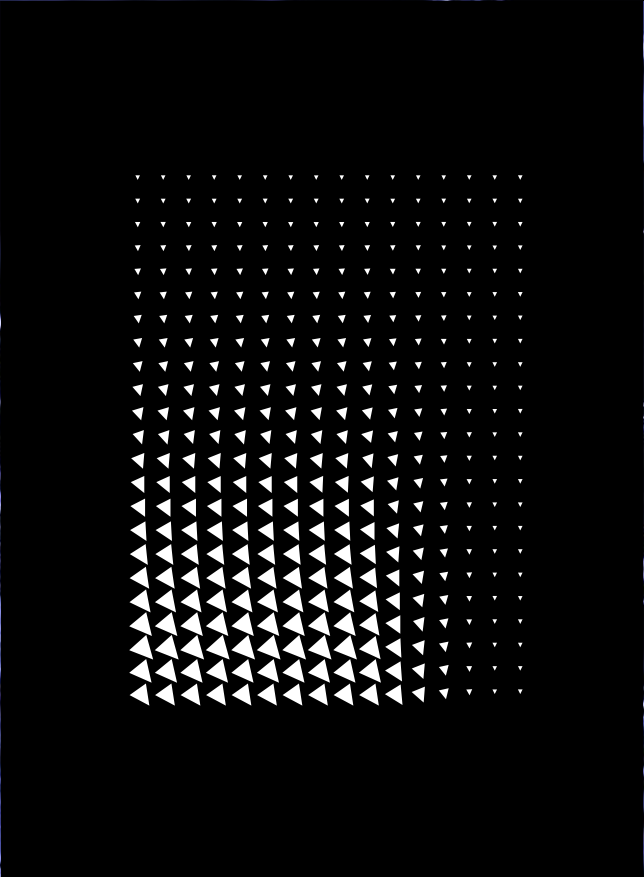
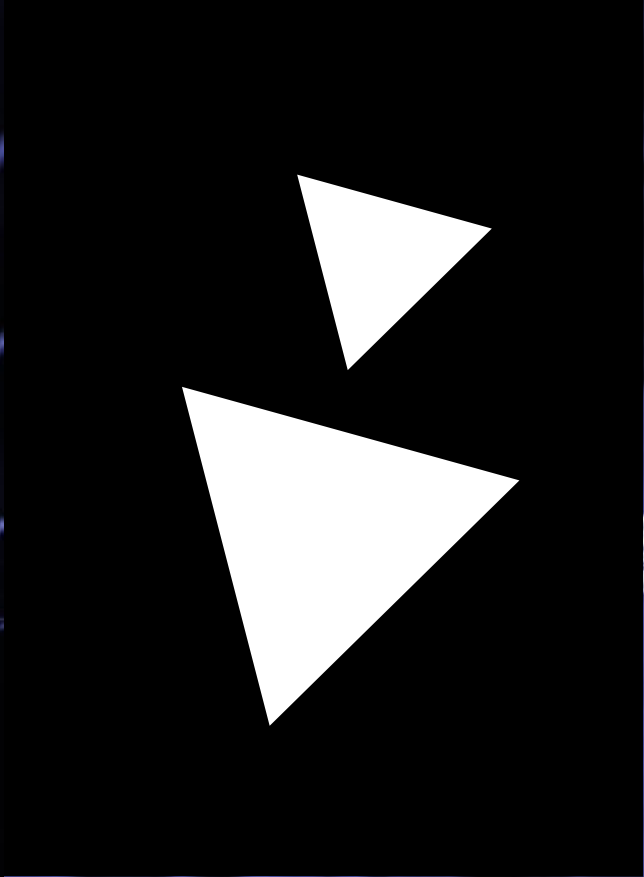
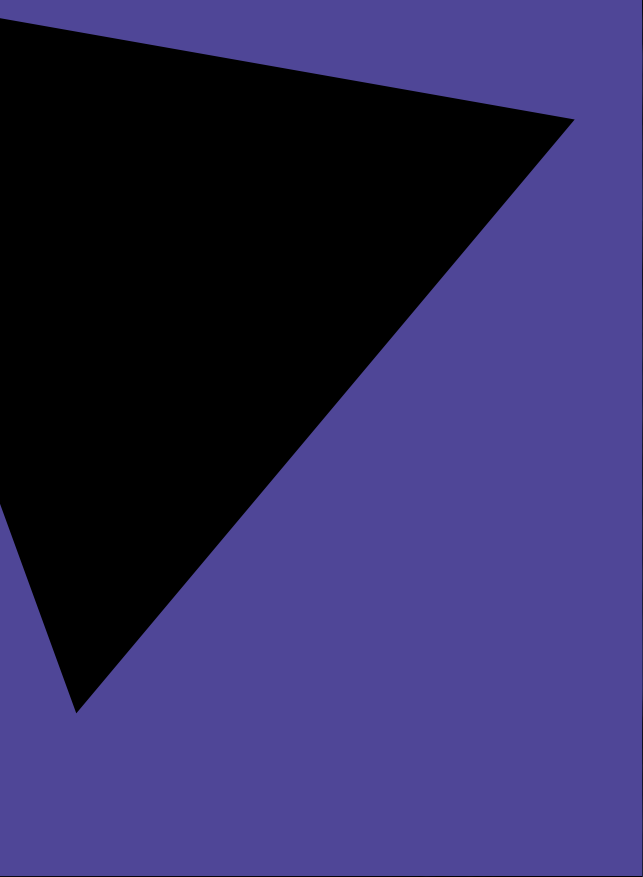
#### Evie Clark-Yospa

Since graduating from our Music Production course in 2018, Evie has become an accomplished audio engineer. She has worked with Spotify, The BBC, Years and Years, Folded Wing, Emeli Sandé, and many more.

As manager of The Premises Studios, Evie carried out multiple roles, including engineering and mixing sessions, liaising with clients, booking sessions, and more. Her work as a freelance engineer sees her fulfilling similar roles. She's now at Miloco Studios, which opened its doors in 1984 and has over 170 studios worldwide.

"I am very grateful for my time at BIMM Institute because it gave me the foundation I needed to launch my career in audio," says Evie. "The lecturers were great, and I met some of my best friends there."







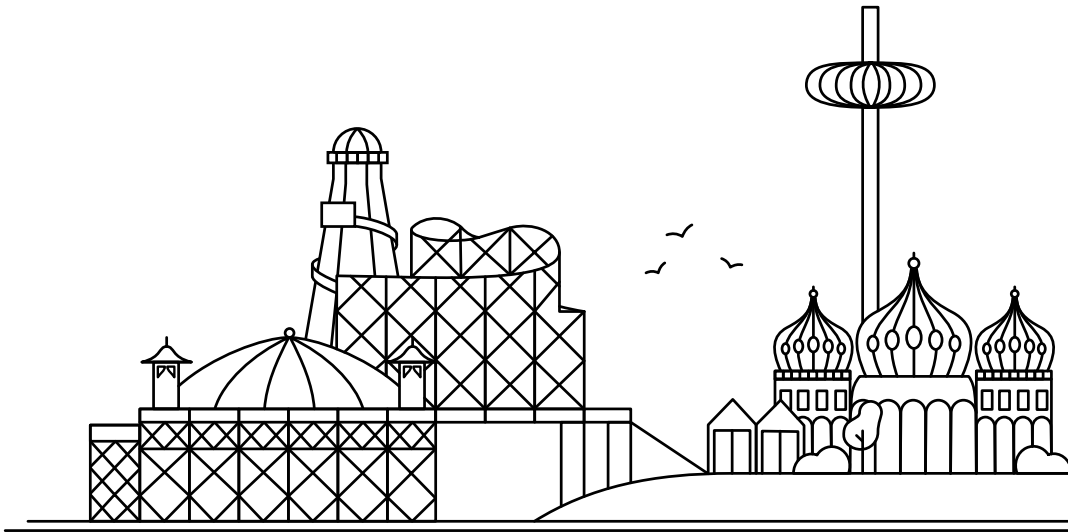
# Our cities

Take a tour of our locations and soak up the atmosphere.



# Brighton

Welcome to Brighton, where music flows through this city's bones. This south-coast city boasts a rich and diverse musical and cultural history. It's a place once notoriously associated with mods and rockers, and Fatboy Slim's Big Beat via the now infamous Skint Records.





# Welcome to Brighton

---

**Brighton has reinvented itself time and time again. And today, it's home to the very best independent labels, shops and venues. It has been instrumental in building the careers of artists such as Rag'n'Bone Man, Royal Blood, Bonobo and BIMM Institute alumni James Bay and Black Honey.**

Brighton's reputation for unique clubs and bands is known the world over. Yet the city is also home to one-of-a-kind recording studios (such as Brighton Electric, Small Pond and Metway), labels (such as Fatcat, Mr Bongo and Tru Thought Recordings) and independent record shops. Check out Bella Union Vinyl and Resident, winner of the 2019 Music Week Award for Independent Retailer of the Year.

The live music scene is also as vibrant as ever with venues such as Concorde 2, The Hope & Ruin, The Dome and Brighton Centre. And it's no surprise that Brighton is home to Europe's leading showcase for new music. Every May, The Great Escape Festival showcases over 450 up-and-coming artists based all over the world across 35 walkable venues. This city is an absolute hive of activity with Brighton Pride, Brighton Fringe and a host of other festivals drawing musicians, creatives and industry professionals to its heart. Now, it's time to call this colourful, quirky and liberal city home.

Brighton is an eclectic and vibrant city that's bursting with music. It was the perfect place to open our first-ever college. We opened the doors to our BIMM East Brighton building in 2001. Since then, we have seen the likes of James Bay, Tom Odell, Josh Harrison (Brighton Electric Studios), and Naomi Bressani (Head of Digital, Republic of Music) walk through our doors and out into the music industry.

We have expanded the college with two additional buildings and venues located across the city. Between them, our buildings house an array of industry-standard equipment and facilities.

These include two gig-ready live performance rooms, drum rooms, an SSL mix suite, songwriting, bass, guitar rooms, four Mac suites with recording booth facilities, and common spaces that include our very own coffee stand: Rory's BrewShack.

At BIMM Institute Brighton, you'll have the opportunity to fully immerse yourself in Brighton's music scene through our partnerships with local rehearsal and production spaces, as well as the best music businesses in the city.





**Martin Wright,  
College Principal**

Martin Wright is our College Principal and has over 30 years of experience in the music industry.

Martin has recorded and toured with artists such as Procol Harum, Ronnie Wood, Slash, Reef and many others. He recently fronted a BIMM Super Group of lecturers who performed Peter Gabriel’s album *So* for a charity event at The Old Market, one of Brighton’s best-loved live music venues.

Martin has been with us since 2005, joining us as a multi-disciplined lecturer for performance and songwriting. After gaining his teaching qualification from the University of Sussex, he supported many artists at BIMM. He became Deputy Head of Songwriting before taking on the role of Education Manager.

In 2015, Martin became College Principal at BIMM Institute Brighton and continues to lead BIMM Brighton’s dynamic and creative team to support all students’ needs.



**BIMM Institute  
Brighton alumni**

Our Brighton alumni have gone on to achieve great things:

- James Bay: Singer-songwriter and guitarist whose debut studio album, *Chaos and the Calm*, shot to no.1 in the UK Official Albums Chart
- Napsugár Bardócz: Assistant Artist Manager at Everybody’s Management (who represent Mumford & Sons and Jack Garratt)
- Tom Odell: Singer-songwriter with a UK no.1 debut studio album, *Long Way Down*
- Josh Harrison: Producer at Brighton Electric Studios
- Naomi Bressani: Head of Digital at Republic of Music
- Lewis Amoroso: Music Producer



**The music industry  
in Brighton**

Brighton is rich in dynamic music businesses, including music labels, agencies and venues to inspire you. Take a look at some of the businesses you can engage with:

**Music labels**

- Tru Thoughts Recordings
- Future Noise Music
- FatCat Records
- Republic of Music Ltd
- QM Records
- Pool Valley Records, BIMM Institute’s student label

**Music venues**

- Brighton Dome
- Concorde 2
- The Green Door Store
- Komedia
- The Prince Albert
- Chalk
- The Brighton Centre



**Brighton Electric**

There’s nothing like the experience of creating music in a professional studio to really hone your skills. That’s why we’ve partnered with the award-winning Brighton Electric to offer their studios, rehearsal and venue spaces while you’re studying with us. Brighton Electric has become a core part of the local and national music scene, hosting prominent artists such as Royal Blood, The Cure, Florence Welch and Foals.

The complex features 17 practice studios, two high-end recording studios, a venue, bar/cafe, as well as a range of mix studios, storage facilities and a mastering suite.

You’ll also have the chance to get your hands on some amazing hardware, including the exquisite vintage Neve 5316 console.

**Did you know?**

BIMM House is our four-storey, Grade II listed building – and it used to be Hove Town Hall.

The amps and speakers in our bass room were generously gifted to BIMM by none other than Nate Watts, Stevie Wonder’s bass player.

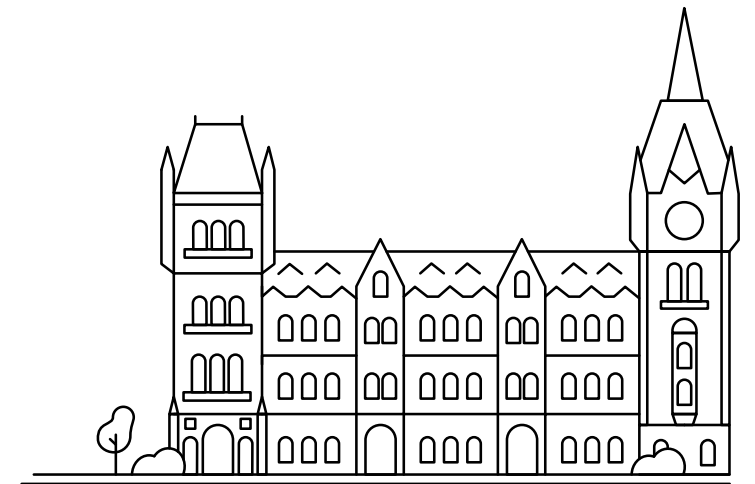
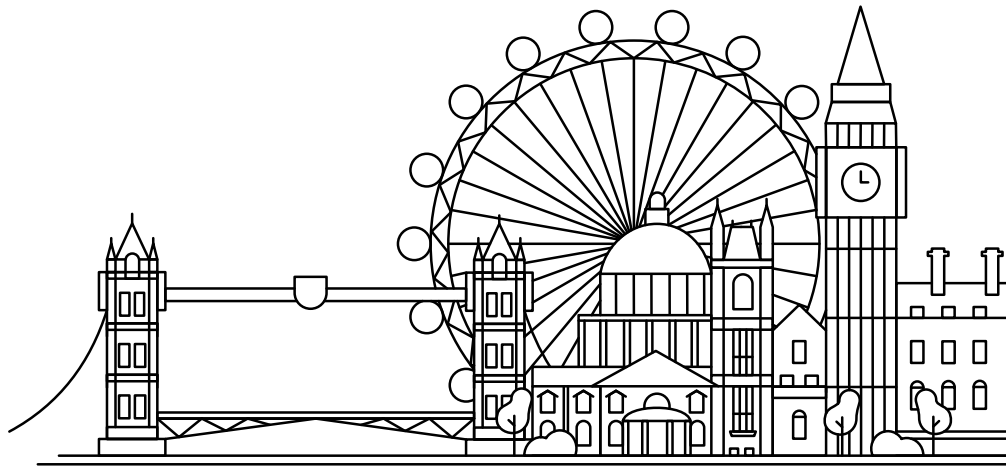
**Know your UCAS codes**

Institution code:  
B39 Campus code: N



# London

Music is part of London's very DNA. It thrives in the city's clubs, pubs, bedrooms, and even the streets themselves. From The Rolling Stones of the 60s, Sex Pistols and punk in the 70s to today's thriving grime and rap scenes with Stormzy and Mercury Prize-winner Dave, London caters to everyone's tastes.



# Welcome to London

---

**Every summer, London is awash with festivals featuring big artists, including British Summer Time, Meltdown, Wireless and Camden Rocks. You'll also see some of the biggest names on the capital's live music scene at famous venues such as The Roundhouse, Alexandra Palace, the O2 Academy Brixton, The O2 Arena, Greenwich and The OVO Arena, Wembley. Or, to catch the next big thing before they break, head to venues like the O2 Forum Kentish Town, The Lexington, Electric Ballroom, The Moth Club or OMEARA.**

London is globally recognised as the centre of the UK's music business. Major labels, promoters, agents, managers, publishers and tech giants call this city home, with brands such as Spotify and Google basing their headquarters in the City.

There's no denying that London is exciting, unique and dynamic. It could be where you unleash your passion for music to the world.

More than just the capital of the country, London is the capital of the music world. With facilities befitting the city's status, BIMM Institute London is the ultimate place to prepare for your first steps into the music industry.

The college has roots dating back to 1983 where it began life as Drumtech Music School London – a dedicated drums teaching centre. Today, it's known as BIMM Institute London and spans two buildings and 20,000ft<sup>2</sup> in Fulham, south-west London.

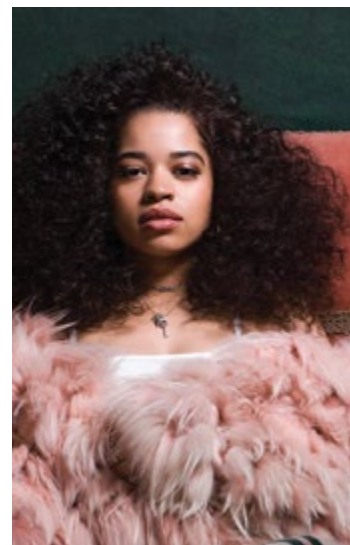
There are an incredible 25 teaching rooms here, all kitted out with equipment from the world's leading musical instrument manufacturers.

You'll find guitars from Fender, Gibson, Epiphone, Ovation, Music Man, Ibanez; drums by Gretsch & Yamaha; keyboards and synths by Roland, Yamaha, Moog, Korg, Arturia, Behringer and Doepfer. We also have amps from Marshall, Orange, Fender, Peavey and Aguilar, and mics from SHURE, AKG, Electrovoice, Coles, Rode, Sennheiser and sE Electronics, Aston, Sontronics, Audix.

Our college houses six medium-sized and three large live performance rooms (one of which is sponsored by legendary lifestyle and footwear brand Vans), five small student rehearsal rooms, seven Apple-equipped Digital Audio Workstation suites, two recording studios, a mastering/immersive sound suite, and five post-production suites. We have five dedicated business, event management and media teaching rooms (with access to a range of camera and media equipment) and a study hub with access to core hardcopy texts.







### BIMM Institute London alumni

Take a look at some of our alumni who have built successful careers in the music industry:

- Ella Mai: Singer/Songwriter
- Aimee Burn: Contract Assistant at 13 Artists
- Clara Wallin: Label Coordinator at Insanity Talent Management
- Alrie Bah: Artist
- Aaron Forbes: Session guitarist

### Simon Colam, College Principal

Simon studied classical and jazz piano at the Guildhall School of Music and Drama. He has developed a career live and in the studio, concentrating on jazz and commercial music and performing in many of the UK's major venues. He's played keyboards for Mercury Prize-nominated London MC Ty, Robert Miles, Donna Summer, Clare Teal, Jacqui Dankworth, Soul II Soul and Jazzinho, touring with them across the world.

Simon was the accompanist for eight years on ITV's The X Factor in the Bootcamp and judges' houses rounds, as well as the rehearsal pianist for ITV's Britain's Got Talent for five seasons.

He was also the accompanist for televised masterclasses from artists including Rod Stewart, Celine Dion, Tony Bennett, ABBA, Michael Bublé, Mariah Carey, Will Young, Take That and Queen.

Before he was appointed as BIMM Institute London's Head of Education (and more recently College Principal), Simon was the Head of Jazz at The Purcell School for Young Musicians and a tutor at The Royal Academy of Music Junior Department. Simon is an Honorary Associate of the Royal Academy of Music.



### The music industry in London

There's never a dull moment in London. It's the heart of the UK that often holds influence over the rest of the country – and sometimes the world.

It's no surprise then that some of the world's biggest music businesses have a home in London. Check out some of the companies you could be rubbing shoulders with:

- Universal Music Group
- Warner Music Group
- Sony Music Entertainment
- Live Nation UK
- Paradigm Agency
- The O2
- The SSE Arena, Wembley
- The Roundhouse
- The Underworld
- The Camden Assembly
- O2 Academy Brixton



### Drums at BIMM Institute London

The clashing of cymbals and cracking of snare drums have been echoing throughout BIMM Institute London (formerly Drumtech) for nearly four decades. With all this history, it's no surprise that we have one of the best drums departments in the country.

Our three drum studios are decked out with high-end equipment like kits from Yamaha and Gretsch, cymbals by Zildjian, percussion from LP, drumheads by Evans, and sticks by Vater.

You'll be able to practice in one of our five specially equipped acoustic drum booths, all sound-insulated, so you're free to let loose. You'll then perfect your performance chops and collaborate with bassists, guitarists and vocalists in one of our three live performance rooms.

### Did you know?

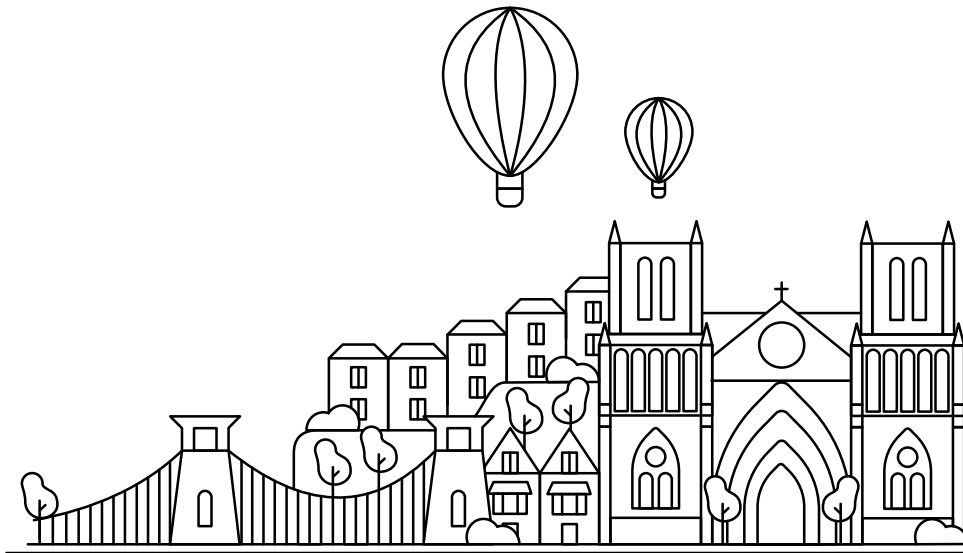
- Our incredible masterclasses regularly take place in fantastic music venues steeped in history, like Bush Hall.
- We have a fully spec'd Victory Amp room, featuring flagship Victory amp models and a wealth of versatile guitar options.

### Know your UCAS codes

Institution code: B39  
Campus code: A

# Bristol

Bristol is where music and art come together to form a diverse creative community. This eclectic music scene is well-known for drum & bass (Roni Size), trip hop (Massive Attack, Portishead) and punk, which is now enjoying a resurgence due to the success of BIMM alumni IDLES. But you'll find everything from folk to techno to performance art here in Bristol. It's an inclusive creative city where everything is possible.





# Welcome to Bristol

**Bristol’s emerging names show the city to be even more eclectic than ever. Check out Eva Lazarus, Heavy Lungs, Giant Swan, Katy J Pearson – and BIMM Institute Bristol alumni Bonsi, Gardna and Freddie Lewis – and you’ll be sure to find something you love. A strong network of live music venues – such as The Exchange, Strange Brew and Thekla – supports each artist.**

City festivals are here too. Just check out Love Saves The Day, Bristol Sounds and St. Pauls Carnival. Of course, the ever-popular 2000trees is growing year on year, and the world-famous Glastonbury is only a stone’s throw away. This independent, diverse and artistic city is waiting for you to become a part of it.

BIMM Institute Bristol opened its doors in 2008 and now has two campus buildings close to each other in Stokes Croft. The area is home to some legendary Bristol clubs, pubs and venues, not to mention loads of amazing graffiti, and is located right in the heart of the city.

Our brand-new, state-of-the-art campus building (opened in September 2022) houses a two-room performance venue, including a glass DJ booth, café and multi-level viewing platform. It’s like no college you’ll have seen before!

Across our buildings you’ll also find four industry-standard recording studios, a green screen media room for your music video dreams, several Mac suites and multiple teaching rooms – all kitted out with top-spec, professional-quality music and media equipment. Plus a well-being hub, edit suites, practice rooms and a library.

Specialist studios, incredible equipment and a 65-seater performance venue are just some of the things that make BIMM Bristol the place to turn your goals into your dream career. You’ll find multiple teaching rooms – all kitted out with top-spec, professional quality music equipment – plus several tutorial rooms and a common room. And it’s in our common room that you’ll rub shoulders with top musical talent and mix with like-minded souls.





**Hannah Phipps  
College Principal**

Hannah Phipps has been part of the BIMM Institute Bristol family since 2010. Originally a modern languages graduate, Hannah’s creative side projects eventually led her into a career in music and education.

Since joining BIMM Institute, Hannah has worked in various roles across student support, teaching, course leadership, education management and curriculum design. Witnessing the student experience from many angles helped Hannah to recognise that learning is about much more than just what happens in the classroom.

Hannah is inspired by the power of creative communities and is passionate about being a present and transparent leader for staff and students. Hannah, like most members of the staff team, is also an active musician. She is currently the front person, songwriter and guitarist in the Bristol-based quirky pop band Milkie and a secret feminist punk band (who you might catch playing at a festival this summer if you’re lucky!).

**BIMM Institute  
Bristol alumni**

Our Bristol alumni studied in one of the UK’s great music cities and springboarded into the music industry:

- Caitlin Buller: Publicist at Think Social
- Nathan Stone: Creative Director and Concert Booker at MJR
- Mike Thompson: Freelance Tour Manager and Promoter’s Rep
- George Ezra: Award-winning singer-songwriter



**The music industry in Bristol**

The Bristol music industry is thriving. With a reputation for being edgy, Bristol benefits from a booming electronic music scene, a buzzing punk community and an inclusive DIY ethos that underpins the cultural activity in the city. Here are some of the exciting businesses that have chosen Bristol as their home:

**Music labels**

- Breakfast Records
- Art is Hard Records
- Invada Records
- Saffron Music
- Stolen Body Records

**Music venues**

- O2 Academy
- Marble Factory/Motion
- The Fleece
- Strange Brew
- Thekla (DHP Family)
- Rough Trade

**Festivals**

One of the best things about living in the Southwest is that we have the best festivals! From Glastonbury to Boardmasters, Green Man to Love Saves the Day, Boomtown to Tokyo World – the list is endless.

Whether you are a performer or interested in one of the many roles behind the scenes, we have countless opportunities to get stuck in and learn on the job. Many of our events and business lecturers hold key roles at these events and have even launched their own award-winning festivals, 2000trees and ArcTangent.

**Did you know?**

George Ezra studied songwriting at BIMM Bristol before finding fame with his smash-hit single ‘Budapest’.

• Jon Beavis, IDLES’ drummer and BIMM Bristol drums graduate, was listed as one of Music Radar’s ‘13 Best Rock Drummers in the World 2018’ alongside Queen’s Roger Taylor and Smashing Pumpkins’ Jimmy Chamberlin.

• BIMM Institute Bristol gigs are regularly held aboard the iconic Thekla, an award-winning converted German cargo ship moored in Bristol Harbour. As a first-year student, you’ll be given a tour of the city by boat during induction week.

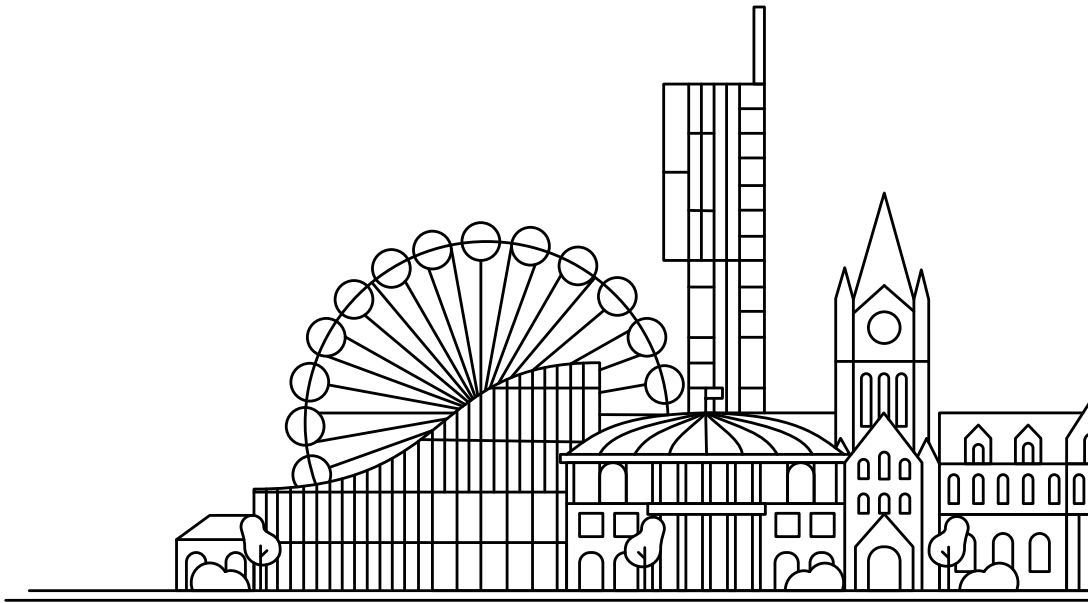
**Know your UCAS codes**

Institution code: B39  
Campus code: L



# Manchester

Manchester is internationally recognised as a city with a great musical history thanks to the impressive list of bands that have called the city home. New talent keeps emerging, and the scene continues to flourish.



# Welcome to Manchester

---

**Artists and bands such as The Smiths, Oasis, Happy Mondays, New Order, Elbow, The 1975, Pale Waves, Blossoms, PINS, The Blinders, The Slow Readers Club and rapper Aitch have all walked Manchester's streets and played its venues.**

Manchester Academy 1, 2 and 3 are just a short walk from the city centre, as are the O2 Apollo Manchester and AO Arena (Manchester Arena). Venues such as Gullivers, YES and Gorilla are the perfect places to catch the best new bands.

Mancunians love a festival too. And in Manchester, big names flock to play at the likes of Parklife and Dot To Dot. It's also home to Neighbourhood, where some of Manchester's most prestigious music venues join together to host a one-day event. Over 100 artists and bands from all over the world perform at this friendly and diverse event.

Manchester is exciting, independent and always innovative. Will you be part of the next generation of prestigious and progressive music professionals who call Manchester home?

BIMM Institute Manchester is designed to put you right at the centre of Manchester's music scene. We have two buildings: Great Marlborough Street (an impressive 12,000 square-foot facility) and Bank Chambers (equipped with exceptional teaching rooms and studios).

Across our two buildings, you'll find incredible facilities such as live performance rooms, Mac suites, teaching spaces equipped with full PA systems and industry-quality backline equipment, a state-of-the-art production suite and much more.







**Professor Nick Donovan**  
**College Principal**

Nick joined the BIMM Institute group in 2013 and has successfully helped to launch three new BIMM Institute colleges. An experienced academic and commercial manager, he has assumed a number of leadership roles at BIMM Institute. He was previously Head of Education at BIMM Institute Manchester, College Principal of BIMM Institute Germany (Hamburg and Berlin) for five years and is now returning to the UK as College Principal at BIMM Institute Manchester.

Before joining BIMM Institute, Nick worked as a lecturer in the Department of Contemporary Arts at Manchester Metropolitan University, lecturing in Critical Theory and Popular Music Discourse.

His PhD thesis entitled 'Composing Interactions Within Sound and Image in Digital Technologies' led him to work with global, groundbreaking initiatives, such as The Large Hadron Collider application for Mac and Wii remote, which was developed as part of a project funded by CERN, in association with the LHC Sound Project.

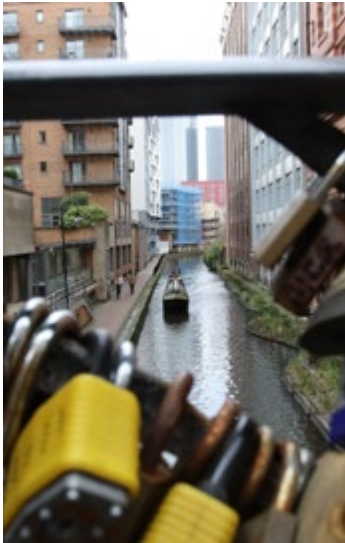
Nick is also an experienced composer and musician. He produces and records under the name DEADBEAR, and his recent work includes electronica releases on Cascine and Art Is Hard Records, with festival appearances across Europe. Nick has composed within innovative contexts and groups, including laptop orchestras, contemporary theatre and scoring for games.



**BIMM Institute**  
**Manchester alumni**

Our alumni immerse cut their teeth in this city's music scene. Here are some of our alumni who are living their dream careers today:

- Via Culpan: Event Coordinator at GoTo Live
- Nikita Milukins: Signed to Get Down Recordings
- Working Men's Club: Signed to Heavenly Recordings with over 22,000 monthly listeners on Spotify
- Natalie White: Head Promoter's Rep at Strange Days
- Kike Adenowo: R&B, Neo soul artist



**The music industry**  
**in Manchester**

Manchester is full of innovative music businesses, old and new. It's a city full of music venues, agencies, music labels, record stores and much more. Take a look at the companies you'll have on your doorstep:

**Music labels**

- Melodic Records
- Skam Records
- Swing Ting
- Banana Hill
- Sola
- Sferic
- Hypermagic

**Music agencies**

- Bloomsbury Music Group
- Key Music Management
- SJM Concerts
- DHP Family
- Scruff of the Neck
- Glasswerk



**Music venues**

- YES
- Band on the Wall
- Albert Hall
- The Deaf Institute
- Gorilla
- Gullivers
- The Castle Hotel
- Aatma
- Soup Kitchen

**Partnerships in Manchester**

Our partnerships give you access to the following opportunities throughout Manchester:

- **Performances** at Gorilla, Band on the Wall and YES
- **Writing and recording** at Blueprint Studios and Airtight Productions
- **Work experience and internships** with Sounds From The Other City, Sentric Music and GoTo Live

**Did you know?**

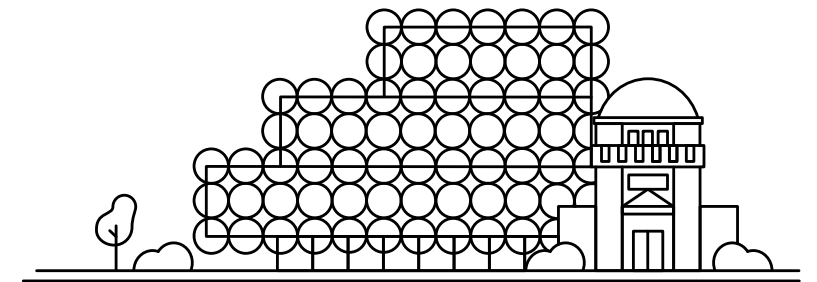
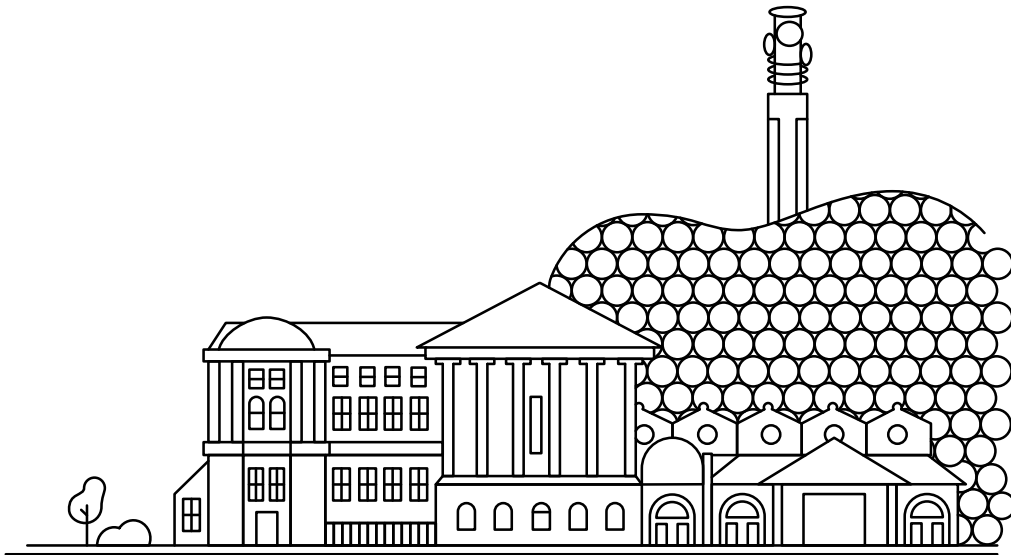
- Our Great Marlborough Street building had the same interior designer as The Hacienda: Ben Kelly. The iconic venue inspired Manchester's music revolution in the 80s and 90s.
- Our Bank Chambers building used to be a bullion bank vault owned by the Bank of England.

**Know your UCAS codes**

Institution code: B39  
Campus code: R

# Birmingham

Welcome to Birmingham – a city is packed with vibrancy and culture. It's home to the quirky neighbourhood of Digbeth – a growing creative centre with music, media and television projects on every corner. What's more, the Sunday Times crowned it the 'Coolest Neighbourhood in Britain', which is why we're delighted to have a base here.





# Welcome to Birmingham

---

**The city's diversity has often influenced its sound over the past 50 years, seen through bands like Musical Youth, The Specials, The Streets, The Move and The Beat. The city also had a huge Bhangra scene for years that has been infused into the wonderful tapestry of Birmingham's music. Today, the city is still a melting pot, with genres such as grime, indie, heavy metal and electronic/ DnB/ house seeping through the streets.**

Some of the best new independent music is being brewed across the city right now. The underground music scene is evolving fast, constantly experimenting and pushing boundaries. Rap and grime artists are killing it on the Birmingham live music circuit. It's not hard to see why. Birmingham is the birthplace of many musical legends, such as heavy metal titans Black Sabbath, as well as Electric Light Orchestra, Duran Duran, UB40, Jamelia and Steel Pulse. More recent artists such as Laura Mvula and Lady Leshurr are also paving the way for the next generation of musical talent.

This place has a year-round programme of phenomenal festivals and plenty more opportunities to see live music in Birmingham. You'll be spoilt for choice with Birmingham music venues like the O2 Institute in Digbeth, The Sunflower Lounge and The Mill.

Birmingham is young, progressive and forever experimental – and there aren't many better places to study music.

Opened in 2017 by none other than Black Sabbath's Tony Iommi, BIMM Institute Birmingham is located in Digbeth, the city's most exciting and creative quarter. In our new Floodgate Street building, Birmingham's undeniable musical heritage meets the very best modern technology and equipment.

Here, you will be surrounded by state-of-the-art facilities such as fully loaded Mac suites, multiple performance rooms with industry-standard equipment and our brand new recording studio.





**Antony Greaves,  
College Principal**

Antony Greaves is an established music figurehead and industry expert. Antony moved into his role as College Principal in 2017.

Throughout his glowing career, he has worked as a technical manager at the world-famous Mayfair Recording Studios, working with artists such as U2, Travis and Kylie Minogue.

Antony is also widely regarded for pioneering the UK's first Electronic Music Production degree. This is a subject that's available to study at BIMM Institute.

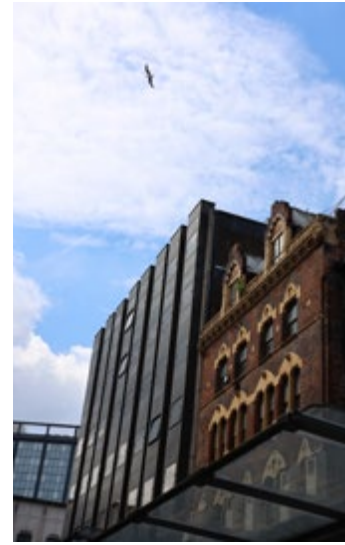
Over his career, Antony has also worked alongside some of the world's biggest artists, including Coldplay and Amy Winehouse. He is a guitarist and songwriter in his own right, as well as a development consultant and author of the world's first music production graded syllabus, which is now delivered in 42 countries around the world.



**BIMM Institute  
Birmingham alumni**

Our new Birmingham alumni are already making their mark in the industry:

- SIPHO: R&B/electro pop artist signed to Dirty Hit who has appeared at major festivals and on Later... With Jools Holland.
- Tilly Wellard: This Music Business graduate is now an A&R Scout at AWAL.
- Insurgent: This up-and-coming metal band comprising four BIMM students is already making waves in the UK.
- Raluca Alexe: Our Events Management graduate worked on the 2022 Commonwealth Games.



**The music industry  
in Birmingham**

Birmingham is an experimental and creative city. Here are some of the innovative businesses that have decided on Birmingham as their home.

**Music labels, agencies  
and promoters:**

- Punch Records
- BE83 Management
- 5B Artists and Media
- Leftfoot Events
- 456 Live
- This is TMRW
- The Song Lab

**Music venues**

- The Sunflower Lounge
- Hare & Hounds (Kings Heath)
- The Flapper
- O2 Institute & Academy
- Custard Arts and Entertainment complex



**Recording studio**

If you're interested in music production, songwriting or one of our performance subjects, you'll have the chance to apply your skills in a professional-level recording environment.

In 2018, we expanded our already impressive range of facilities with a multi-million pound, fully bespoke professional-standard recording studio. This new facility was designed from the ground up using the in-depth expertise of college Principal Antony Greaves, our BIMM lecturers, The Studio People and Audient.

You'll be able to record in a professional space, which features superior treatments such as 'Live End – Dead End' arrangement, adjustable acoustics, bass traps, absorption panels and reclaimed wood Schroeder diffusers, turning the studio's live room into a versatile, high-quality environment for professional-level sound capture. You'll achieve the exact character of sound that you want in your production.

The dedicated studio control room also features an array of analogue and digital equipment, such as an Audient ASP8024 analogue mixing desk, Pro Tools HD recording system, and numerous analogue and digital outboard processors and effects – exactly as you would find in a professional recording studio.

The studio Apple Mac Pro is also equipped with industry-standard software packages such as Logic Pro, Ableton Live, Native Instruments, Melodyne and hundreds of third-party plugins.



# Higher Education College Transfer Scheme

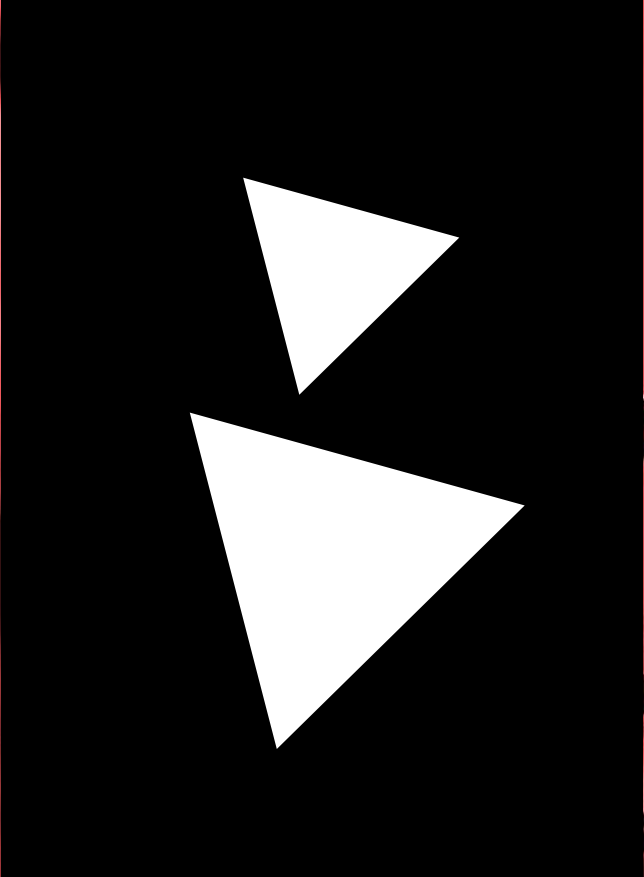
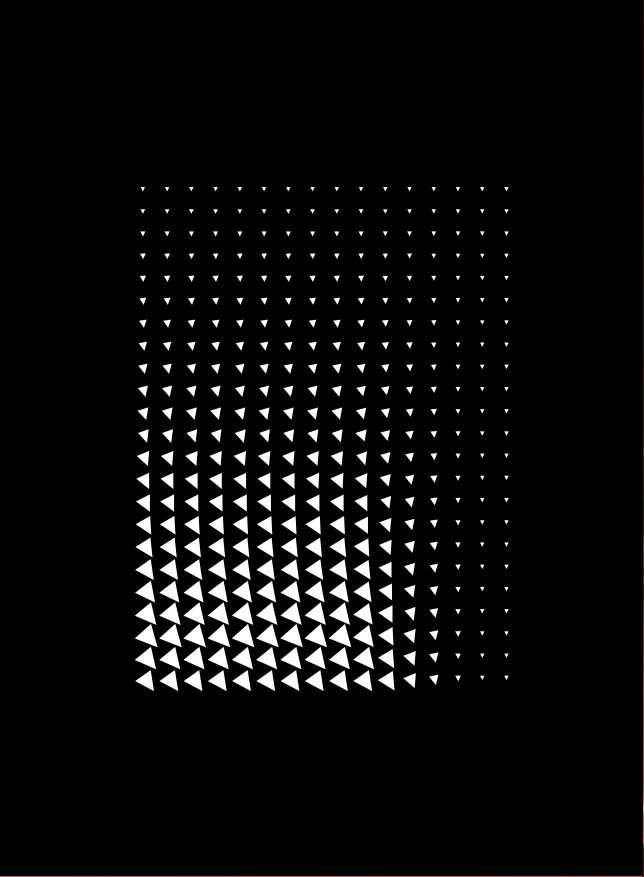
**Our colleges are located in the cities where music matters most. And because of our impressive network of colleges across Europe, we provide something you won't find at any other contemporary music college: the Higher Education College Transfer Scheme.**

That means you can complete your course in different European cities by splitting your three years of study across BIMM Institute colleges in Berlin, Birmingham, Brighton, Bristol, Dublin, Hamburg, London, and Manchester.\*

Start your course in one city, transfer to another for your second year and, for your final year, stay where you are, return to where you started, or even transfer to a third city.

*\*The scheme is only available where the same course is delivered and at the same delivery stage in the chosen location. Full details and conditions are available at [bimm.ac.uk/college-transfer-scheme](https://bimm.ac.uk/college-transfer-scheme).*







# College life

---

From wellbeing to student clubs and everything in between... BIMM is so much more than your course.





## Student wellbeing

**You're never alone when you're at BIMM. Our community makes sure of that. Our Student Support Teams can offer confidential support and guidance, whether it's a problem with your study skills, course, or student life.**

Each of our five UK colleges has a Student Support Team and every student has a named contact within each team. This is someone who's there for you and understands the individual demands of your specific course. All our team members are fully trained professionals who are ready to listen, help and put action plans in place when needed.

We're committed to a policy of equal opportunities. This means we aim to make all our services available to every student, regardless of background, culture, age, gender, ethnicity or sexuality. Here's an overview of the different ways in which we help our students:

### Personal Tutor Scheme

It's important to us that you have everything you need to reach your full potential. That's why we run a Personal Tutor Scheme. You will be assigned a dedicated personal tutor who can support you in your studies, with life as a BIMM Institute student, and in your career development.

Your personal tutor will be a recent graduate with first-hand experience of student life. They will be available online and in-person as you find your feet in your new city and college, and can offer peer advice and guidance throughout your course. You'll be introduced to them before you start so that you can get to know each other and get the ball rolling with your life in music.

### Counselling and stress management

Your wellbeing and welfare are extremely important to us. If you ever experience any difficulties, it's always better to talk to someone. Our Student Support Team is made up of trained listeners who are here for you. They offer a safe space to discuss any of your concerns. We can also provide counselling and stress management. This is done on a one-to-one basis and is strictly confidential.

Should you also require something longer term, we can help you find a service that's right for you. If you suffer with long-term mental health difficulties, come and talk to the team. Don't feel alone: we're always here.

### Togetherall: Online support

Students and staff who are going through a tough time can now access free online support 24/7 with Togetherall. Whether you're having trouble sleeping, feeling low, stressed or unable to cope, Togetherall can assist by offering support and helping you to take control of the situation.

### International students

We're here to help if you're making the leap and joining us from another country. Before you arrive, our International Team can answer any questions you may have to make you feel more at ease. A member of our Student Ambassador Team can also meet you at the airport and help you settle in.

No matter how you feel and whatever you're going through, you can lean on us.

[bimm.ac.uk/student-support](https://bimm.ac.uk/student-support)





## Access and participation

**Here at BIMM Institute, we're wholeheartedly committed to widening access and participation from underrepresented groups in higher education. Whether you're an applicant or a current student, we strive to improve the equality of opportunity for all.**

Access and participation supports specific groups of students to access higher education and helps with career development where there might have been past challenges. In particular, we're encouraging and supporting applications from underrepresented groups, such as Black, Asian and ethnic minority communities, students from lower-income backgrounds and areas of low participation in higher education, students with disabilities, care-leavers and mature students.

Our Access and Participation Plan sets out our commitment to remove any gaps or hurdles that might be in place for someone regarding access, success and progression. As a team, we review and evaluate our initiatives and progress within the AP Plan to iron out any inequalities and make ourselves as diverse and inclusive as possible.

### **Access and participation initiatives and support schemes**

Our schemes and initiatives provide you with the best possible support and opportunities to succeed and progress to a sustainable career in the creative industries. They include:

- A package of bursaries and financial support within the The Fair Access Fund to help students from low-income households, care backgrounds, disabled students and other students identified in our Access and Participation Plan.
- Specific support for students from a care background, such as providing dedicated Student Support Officers to assist you on your educational journey.
- Access and Participation Coordinators, who are on-hand to assist with the transition into life at BIMM Institute.
- The Access and Participation Student Group, which feeds back on AP initiatives and makes sure our work is relevant and fit for purpose.
- The Personal Tutor Scheme, which connects you with a personal tutor who will offer guidance and support.
- BIMM Student Association to enhance our student community and support societies, clubs and extracurricular activities from veganism to football.

We're dedicated to making higher education fairer and more equal. It's something we passionately believe in – and it's why our access and participation department exists.

For more information about these initiatives and our Access and Participation Plan, head to [bimm.ac.uk/access-participation](https://bimm.ac.uk/access-participation)



## Gigs and events

**Being at BIMM Institute isn't about catching 40 winks in a stuffy lecture hall. We run incredible and inspiring events throughout the year so that you can network and put what you've learnt during your course into practice. Our gigs and events are also perfect for finding your people, mixing with new friends and fully immersing yourself into BIMM life.**

Your calendar can be as rammed as you want it to be. Our events include Freshers' Week, masterclasses, industry panels, and so much more. And to complement our college-based events, we have taken some of our gigs, events and masterclasses online so that all of our BIMM Institute locations can get together, share their knowledge and enjoy a collaborative experience.

Speaking of collaborative experiences, live music has and always will be a vital part of the industry. So, you'll have the opportunity to help stage, play and promote regular student-run gigs at renowned city venues. You'll also have the chance to get stuck in with our end-of-term gigs. These showcase musicians, bands and songwriters at events across Birmingham, Brighton, Bristol, London and Manchester.

Aside from performances, our live music activity means you can hone your skills behind and in front of the stage. We also collaborate with the UK's biggest events, so you'll be able to work in roles such as artist hospitality, promotion, stage management, music marketing roles, and so much more.

It's all happening here at BIMM.

[bimm.ac.uk/events](https://bimm.ac.uk/events)

*"My highlight at BIMM Institute so far has to be the end-of-term gigs in my first year. I've had [other] opportunities through BIMM Institute that are probably career highlights, but I will always remember the first year and the life-long friends I've made through those gigs. Everyone's excited, having fun and encouraging – good times with good people."*

**Martha Phillips, Songwriting**





## Work experience and opportunities

**When you study at BIMM Institute you'll be encouraged to think big and take risks. After all, employers want to see that you can demonstrate your passion and skill for your chosen career path. We're here to help you show them what you can do.**

Our comprehensive career support ranges from work placements to masterclasses, right up to our bespoke recruitment service.

### Masterclasses

Every year, we hand-pick a selection of industry giants to come and give masterclasses at BIMM. Hugely popular with our students, these sessions involve Q&A, live performances and workshops. Truly inspirational, our masterclasses give you the chance to meet those who live and breathe the creative industries.

### Work experience

It's integral to the BIMM experience that all students have the chance to put learning into practice with work placements. Our Careers Team are here to help research and organise placements, or offer support with an entrepreneurial project. In previous years, our students have secured placements with the likes of Sony Music, Universal, Warner Music, CAA, DIY Magazine and many more.

### Industry links and partnerships

We have ongoing partnerships with many influential brands and companies, such as Spotify, DIY Magazine, ATC Management and The Great Escape Festival. Our partnerships and collaborative projects are central to what makes BIMM unique and have been officially commended by the Quality Assurance Agency for Higher Education.

### Careers Team

There's a dedicated Careers Team at each BIMM college. These experienced careers advisors offer tailored support on everything from CV writing, to assisting you with work placements, or offering personal, 1-1 advice on your next career steps.

Visit our website for more information:

[bimm.ac.uk/employability](https://bimm.ac.uk/employability)





Image from Workit event 2022

## Career and recruitment initiatives

### Talent Match

Talent Match is BIMM's free job-matching service, exclusive to students and graduates at BIMM's five UK music colleges. With 800+ employers registered with the service, Talent Match is able to offer over 250 opportunities per year in paid, professional roles. Each student who signs up receives a 1-1 careers advice session with an experienced recruitment professional. Talent Match provides access to roles covering the full creative spectrum: from artist management to journalism, from PR to publishing, with music teaching, sound engineering and countless other careers on offer too. We're serious about employability, which is why we offer this service for up to 18 months from graduation.

### WRKiT

WRKiT is BIMM's annual careers event that puts students in front of top music industry recruiters. These industry-leading events are held in both Manchester and London, bringing together industry brands, record labels, publishers, media, management and more.

It's a fantastic opportunity for graduates to supercharge their future and make the right contacts. Companies who attended the 2022 WRKiT events included Spotify, Sony Music, The Great Escape Festival, CAA, Manchester International Festival, Communion, Hospital Records, DIY Magazine, Atlantic Records, Warner Music and publishers included Kobalt, Sentric and Sony Music Publishing.

### The Greenhouse Enterprise Programme

First launched in June 2021, the Greenhouse Enterprise Programme supports our entrepreneurial students and provides training, coaching, and funding for new business ideas. The Programme is exclusively offered to students from underrepresented groups. These include Black, Asian and ethnic minority communities, students from lower-income backgrounds and areas of low participation in higher education, students with disabilities, care-leavers and mature students. It's the perfect partnership between our Access and Participation Plan and our unrivalled Employability and Careers Programme.





## Student Association

**We understand that university is about more than your course. It's a time to try new things, make lifelong friendships and discover more about yourself. Every BIMM college has its own Student Association that is run by the students (or recent alumni), for the students. And the experiences and activities on offer provide a wealth of opportunities that promote wellbeing and personal development, all of which results in a more rounded education.**

Kashi Chellen, a former BIMM Student Association President, tells us what you can expect and how you can create your own society:

*"The Brighton BIMM Student Association (BSA) launched to provide students with a platform and space to create their own communities of like-minded people.*

*These societies can be started by anyone, and we have a great range of societies across all of the BIMM Institute colleges, including; LGBTQ+, Women in Music, Events, Football, Run Club, Environmentalists, and so many more. You can find groups for each society on Facebook and BIMM Connect.*

*I really enjoy the activism and work that goes into the LGBTQ+ LOUD AND PROUD society. This society has put on a couple of wonderful events to raise money for local LGBTQ+ charities and are very active in promoting resources for education in the community.*

*Being BSA President was so incredibly rewarding. I enjoyed being a part of college decisions and getting to sit in on meetings to see how student voices are heard. The entire BSA team are fantastic and work so hard to ensure that the societies are running efficiently and are represented.*

*Student voices can be represented in management meetings, and financial backing can be provided to ensure the societies can have regular meet-ups and even put on events. Having these opportunities has proven to be something that students enjoy.*

*In order to start a new society, you must have three members, a logo to be promoted on the social channels, and an aim/objective for the society. This could be anything from providing a safe space for your society to meet up, or raising money for a chosen charity.*

*The BSAs across all colleges are in regular contact with each other. It was lockdown that brought us all closer. We worked together to put on the BIMM Lockdown Sessions, which proved to be a success in giving students a creative outlet during the beginning of the pandemic.*

*BIMM Institute Birmingham has a Football Society who we plan to have inter-college games with and set up termly tournaments. BIMM Institute Dublin also has a thriving Events Society. There is some crossover in societies and the aim is to continue the cross-college collaboration and further strengthen those connections."*

[bimm.ac.uk/student-association](https://bimm.ac.uk/student-association)



## BIMM Connect

---

**Connecting you to the industry and with like-minded people is at the centre of BIMM Institute. With BIMM Connect, our free online social network, you'll connect directly to the BIMM Institute community, helping you grow your professional, supporting network and access exclusive opportunities.**

BIMM Connect is home to Europe's largest private community of music students and graduates, as well as members from across our partner colleges: Institute for Contemporary Theatre, Screen and Film School, and Performers College. It joins our communities across music, film, and the performing arts, linking you to fellow musicians, industry creatives and businesses via the app or your desktop. All you have to do is reach out and get the ball rolling.

With BIMM Connect, you can get inspired, post about and find gigs and events, talk to people, set up groups, run projects, get advice, access resources, list your business or service, and apply for work experience and fantastic career opportunities. And, once you graduate, you keep access to the site for life, joining thousands of other alumni with ongoing access to exclusive events and content.

With over 10,000 users from across our student, alumni and staff/faculty communities, BIMM Connect allows you to become part of something bigger.



## Meet the students

---



*“BIMM Institute has always been about making connections. Although the classes have been very insightful and helped me understand the more difficult sides of the industry, the most useful thing I have received from BIMM Institute Berlin is the friendships and connections that I have made throughout the last three years.”*

**Joshua Smith – BIMM Berlin**

*“I have developed a lot through all the friends I’ve met here. Being surrounded by like-minded musicians and collaborating with them has been amazing. It has given me so much more confidence in myself, both personally and professionally. I now know my own voice so much better and have a clear direction for the music I want to create.”*

**Georgina Kircher – BIMM London**



*“Studying at BIMM has propelled me and my development as an artist in a multitude of positive ways. But most of all, the people I have met and worked with as a result really stands out. Being surrounded by such talented and dedicated musicians has encouraged me immensely, and that kind of encouragement feels incredibly unique to the environment BIMM has provided for us as students.”*

**Sarah Crean – BIMM Dublin**



*“Studying at BIMM Institute has hands down been some of the best years of my life. I met incredible people and artists, and I discovered so much. My favourite part about BIMM is the safe environment it creates for the artist. I was able to make mistakes without feeling judged, I was accepted just the way I am, and that was a very important part of who I’ve become today. It taught me to continue asking questions, making mistakes, learning from them, and working hard for what I want in life. And, of course, it was a lot of fun. I miss it so much!”*

**Sarah Shébani – BIMM London**





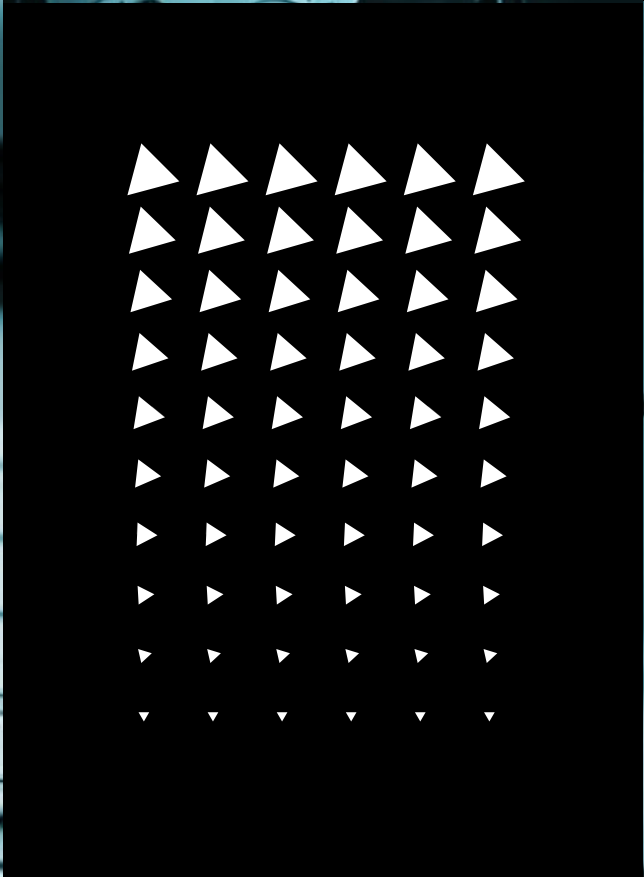
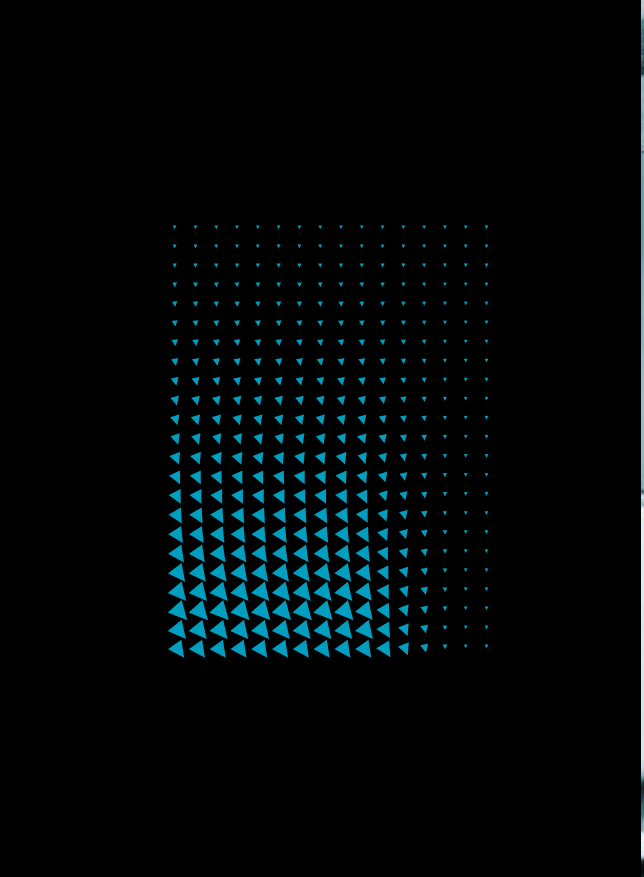
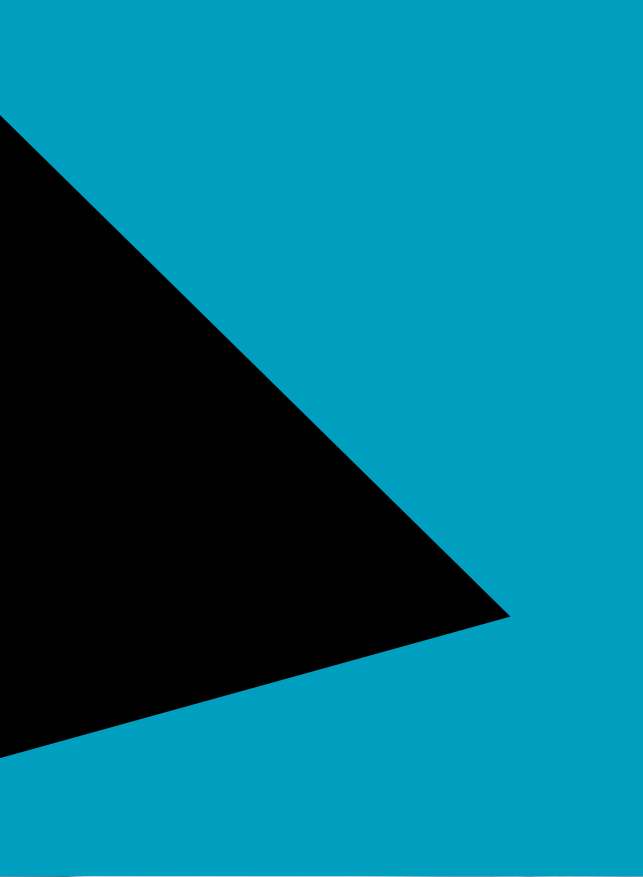
*"BIMM has helped me figure out who I want to be as an artist. Whether that's by studying specific skills like my guitar technique or receiving advice on songwriting, publishing music or the music business in general. BIMM has shown me how much work and dedication is necessary for an artist to succeed in the music industry. It also keeps me motivated and inspired to keep working on myself, my music and the artist that I want to become."*

**Daniel Valnic – BIMM Berlin**

*"BIMM Institute helped me find my footing in London and understand the industry better. I got festival and networking opportunities really early which helped me meet a lot of people I am still in contact with today. I've grown so much since studying at BIMM Institute and having to write so frequently and getting honest peer feedback helped prep me for the harsh reality of the industry."*

**Celine Love – BIMM London**







# Our courses

---

From module descriptions to joint honours options, this is everything you need to know about each course.





# The BIMM Institute graduate

---

## **Why do BIMM Institute courses put you ahead of the rest?**

Graduates from BIMM stand apart from the crowd in their abilities and skills. Thanks to a vast range of placement opportunities and in-depth industry involvement from day one, you'll be able to hit the ground running. We've lost count of our graduates who've gone on to enjoy top spots in the charts and who have affected great change within the creative industries.

So what does the BIMM graduate look like? These are the characteristics you will develop and they are the winning skills that employers and collaborators look for.

## **Employable and entrepreneurial**

You will have all you need to act with professionalism and integrity, showcasing entrepreneurial skills to your collaborators and potential employers.

## **Creative, collaborative and connected**

You will be self-assured enough to form lifelong and inspirational creative networks. With these networks, you can connect and collaborate with others on activities or projects that fuel your creative passion.

## **Resilient and adaptable**

You will be confident and resilient enough to quickly recover from any setbacks that might come your way.

## **Socially responsible**

You will understand how your actions can enhance the wellbeing of others and will be equipped to make a valuable contribution to society.

## **Globally aware**

You will be able to act effectively in settings where language and culture are perhaps not familiar to you, understanding international context and practices both within, and beyond, your discipline.

## **Professional**

By showing an informed understanding of your discipline, you'll have the ability to question its principles, practices and boundaries.

## **Intellectually curious**

You will demonstrate initiative, self-reflection, academic integrity and ethical responsibility. Plus, you will gain powers of analysis, synthesis, and evaluation.

## **Self-aware**

Throughout your life, you will have all you need to seek knowledge and continue learning. You will set yourself high standards and have qualities that enable you to be reflective and an independent lifelong learner as you progress on your creative journey.





## Undergraduate courses

---

**We design our courses to truly meet the needs of today's and tomorrow's music industry. Whichever path you choose, you can expect to benefit from the following.**

### **Course module options**

We realise that everyone's different. Each of you has your individual dreams, goals, interests and strengths. That's why our courses allow you to define your own route to success via a range of module options. You can build your course according to your interests and career aspirations.

### **Enhanced employability**

All our courses include a set of modules that are responsive to employers' needs. Some of the transferable and soft skills we teach include personability, professionalism, a healthy work ethic, emotional resilience, creative and critical thinking, and contextual awareness. These skills complement our hands-on, practical education, allowing you to develop a flexible skillset to succeed in an industry that values multi-skilled music professionals.

### **Industry exposure**

We've established invaluable and unrivalled industry connections that you won't find anywhere else. Every single one of our courses will include the opportunity to undertake work placements and engage with real-world industry. You can rely on us to provide you with an authentic experience of the music sector, giving you the insight and time to work out which direction you want to go in when you graduate.

### **Exclusive guidance**

At BIMM, we believe in a culture that nurtures and supports everyone. That's why our guidance and support ranges from academic to personal wellbeing. Your course will offer you expert subject guidance and you'll be exposed to masterclasses with industry giants. Alongside this, our Personal Tutor Scheme will pair you with a recent graduate who will be available to you online and in-person. And finally, our Student Support Team are an experienced group of people with access to resources, schemes and advice on anything to do with your course, study skills or student life.

### **Careers initiatives**

Our range of careers schemes is hard to beat. We offer a free, bespoke recruitment service called Talent Match, an online community where you can connect to other students and graduates called BIMM Connect and our own careers fairs that are specially focussed on creative industry employers. We offer ongoing support long after graduation to help ease you into the industry and provide that all-important back-up.

### **Single or joint honours: Which is right for you?**

Many of our courses can be studied as a joint honours programme. You can see which courses are paired together on the individual course pages. The split for a joint honours programme is 50:50.

The benefits of studying two subjects is clear: You gain a detailed insight into two separate areas and develop a rounded skillset and understanding of the music industry. A single honours degree, however, is an opportunity to delve into your passion in even more detail. Both programme options will set you up well for the future. The question is whether you would prefer to focus on one area or take a more interdisciplinary route.

# BA (Hons) Electronic Music Production

UCAS code: W383  
3 years full-time



**If you're looking for a career in electronic music production as an artist, remixer, writer, programmer or game audio designer, the BA (Hons) Electronic Music Production course can help you get there.**

You'll learn cutting-edge techniques from lecturers who are already successful producers in the industry. You'll also be taught using our state-of-the-art industry-standard equipment and facilities.

The course will cover practical audio creation, recording, and software skills using a variety of digital audio workstations (DAWs). It will also cover refined industry knowledge, sound artistry, synthesis, sampling, and effective approaches to creating and answering professional briefs.

All students will learn essential critical skills and knowledge. After building appropriate foundational knowledge, skills and experience in Year 1, you may choose three option modules in Year 2 and a further four in Year 3 to refine your career direction.

These options prepare you for a successful career in the industries of electronic music, media and composition, sound design and game audio, each of which provide numerous opportunities for when you graduate. The route you choose to take is up to you.

You'll also have the opportunity to network and collaborate with students on other BIMM Institute degree courses. You'll work directly with them to help diversify your skills and enhance your portfolio. This collaboration will widen your list of valuable industry contacts and prove incredibly useful as your career develops and flourishes.

Start your career in electronic music production today.

## **Modules include:**

- Synthesis & Sampling
- Creative Production Techniques
- Audio Fundamentals
- Mixing Multitrack Audio
- Digital Performance Skills
- Game Sound & Music
- The Art of Mastering

## **Study in:**

- Birmingham
- Brighton
- Bristol
- London
- Manchester

## **Entry requirements:**

Minimum of 2 A-levels at Grade E or above (32 UCAS points), or BTEC Level 3 equivalent, and normally three GCSEs at a minimum grade C/4, including English Language.

Applications by experienced practitioners aged 19+ without formal qualifications may also be considered through RPP (Recognition of Prior Practice).

For more information on the course and modules, visit [bimm.ac.uk](http://bimm.ac.uk).

The option modules advertised as available for BIMM Institute courses are subject to variation dependant on minimum student numbers and the availability of specialist resources at each college.



# BA (Hons) Music and Sound Production

UCAS code: W374  
3 years full-time



**How music is recorded, mixed and mastered is as integral to the creative process as composition and performance. Our BA (Hons) Music and Sound Production gives you the chance to create music and sound in a variety of contexts, allowing you to pursue a fulfilling career in a range of music industry roles.**

The course will provide you with everything you need to bring your technical knowledge and creativity to live and studio settings. You'll also develop the fundamentals required to work with artists.

During the course, you will undertake hands-on learning in our high-tech facilities and have direct access to cutting-edge equipment and software. World-class industry lecturers who know the ins and outs of the creative process will be with you every step of the way, offering direction and support.

Through the core modules, you'll focus on primary areas such as audio fundamentals, music production in context, practical studio engineering and software skills, application of acoustic theory and approaches to answering professional briefs.

Alongside developing your technical knowledge, you'll broaden your general knowledge of the industry, helping you to identify your place within it.

You'll build the necessary skills and understanding to become a successful music producer with a sustainable career in the music industry.

Option modules will help you to focus your studies and create the career route that's right for you. The options you choose can help you forge a successful career in a range of music-based industries, such as recording, live music, film and TV, audio post-production and education.

Start your career in music and sound production today.

## **Modules include:**

- Audio Fundamentals
- Mixing Multitrack Audio
- Approaches to Production & Workflow
- Studio Practice & Engineering
- Vocal Capture & Production
- Foley & Location Recording
- Creative Mix Techniques
- Creativity, Identity & Agency

## **Study in:**

- Birmingham
- Brighton
- Bristol
- London
- Manchester

## **Entry requirements:**

Minimum of 2 A-levels at Grade E or above (32 UCAS points), or BTEC Level 3 equivalent, and normally three GCSEs at a minimum grade C/4, including English Language. Applications by experienced practitioners aged 19+ without formal qualifications may also be considered through RPP (Recognition of Prior Practice).

## **Music Production is also available as a joint honours course:**

BA (Hons) Music Production & Music Business W370

BA (Hons) Popular Music Performance & Music Production W382

BA (Hons) Songwriting & Music Production 3C49

All our joint honours are weighted 50:50 between the two named subject areas. Joint honours course module names and structure may be subject to change.

For more information, visit [bimm.ac.uk](http://bimm.ac.uk).

The option modules advertised as available for BIMM Institute courses are subject to variation dependant on minimum student numbers and the availability of specialist resources at each college.

# BMus (Hons) Songwriting

UCAS code: 3C45  
3 years full-time



**Explore your creativity and develop an in-depth knowledge of your art and the industry with our BMus (Hons) Songwriting course. You'll learn all about this music industry cornerstone, focusing on areas such as lyricism and aesthetics, creating music with technology, and music publishing.**

Working with a diverse range of talented artists to bring your aesthetic, academic and industry goals to life will be at the heart of the course. Day-to-day interaction and collaboration with fellow songwriters, performers, producers and business and events students will help you gain invaluable real-world experience.

As well as being surrounded by a creative and vibrant atmosphere, you'll have access to our state-of-the-art facilities. Each day, you'll learn within large live rooms, recording suites and seminar-based classrooms.

From day one, you'll be encouraged to form your personal stylistic development through a range of disciplines: from solo and group performances to commercial songwriting and music production for film, television and online channels. As the course progresses, you'll be able to choose option modules that best suit your interests and career aspirations. These options will help shape you to become a multi-skilled music professional valued in today's industry.

Highly experienced lecturers currently active in the industry will guide you through the core topics. These include styles and genres, songwriting techniques, musicianship, music publishing, events and releasing, and digital audio workstations (DAWs) technology. You'll also get to attend unique and inspiring masterclasses with some of the best artists in the world, which will stretch you as a songwriter.

Start your career in songwriting today.

## **Modules include:**

- Songwriting Techniques
- Collaboration & Performance
- Music Publishing, Events & Releasing
- Writing in Context and to Commission
- Creative Performance with Mixed Media
- Progressive Creative Technology
- Psychology of Music
- Complementary Instrument Skills for Songwriters

## **Study in:**

- Birmingham
- Brighton
- Bristol
- London
- Manchester

## **Entry requirements:**

Minimum of 2 A-levels at Grade E or above (32 UCAS points), or BTEC Level 3 equivalent, and normally three GCSEs at a minimum grade C/4, including English Language.

Applications by experienced practitioners aged 19+ without formal qualifications may also be considered through RPP (Recognition of Prior Practice).

## **Songwriting is also available as a joint honours course:**

BA (Hons) Songwriting & Music Business 3C47

BMus (Hons) Popular Music Performance & Songwriting 3C48

BA (Hons) Songwriting & Music Production 3C49

All our joint honours are weighted 50:50 between the two named subject areas. Joint honours course module names and structure may be subject to change.

For more information, visit [bimm.ac.uk](http://bimm.ac.uk).

The option modules advertised as available for BIMM Institute courses are subject to variation dependant on minimum student numbers and the availability of specialist resources at each college.



# BMus (Hons) Popular Music Performance

Guitar, bass, drums, vocals, keyboards

UCAS code: W316  
3 years full-time



**Establish your own exciting route into the live music sector with the BMus (Hons) Popular Music Performance. This course is perfect if you're a musician looking to take your technical and creative performance and musicianship skills to a professional level.**

The course combines core topics such as performance, technique, musicianship, theory and technology to help you find and develop your niche as a performer.

You'll be able to further tailor your course to your own artistic and career aims through our wide range of option modules. These include a specific focus in areas such as creative performance, session skills, songwriting, composing, arranging and more. You'll become equipped with the skills and drive required to be successful in any musical situation.

Plus, you'll become fully immersed in the flourishing BIMM Institute community with plenty of opportunities to collaborate with a diverse range of talented students. And you'll spend a lot of time on stage, too. You'll have the chance to play live and perform with your fellow students. Throughout these performances, you'll receive expert guidance from our BIMM Institute lecturers.

Our lecturers are all experienced and highly sought-after professionals with invaluable expertise and experience that will help you progress through the course.

Day-to-day learning will be in large live rooms, smaller studio settings and lecture-based classrooms using our world-class facilities.

Start your career in popular music performance today.

## **Modules include:**

- Songwriting Techniques
- Collaboration & Performance
- Music Publishing, Events & Releasing
- Writing in Context and to Commission
- Creative Performance with Mixed Media
- Progressive Creative Technology
- Psychology of Music
- Complementary Instrument Skills for Songwriters

## **Study in:**

- Birmingham
- Brighton
- Bristol
- London
- Manchester

## **Entry requirements:**

Minimum of 2 A-levels at Grade E or above (32 UCAS points), or BTEC Level 3 equivalent, and normally three GCSEs at a minimum grade C/4, including English Language.

Applications by experienced practitioners aged 19+ without formal qualifications may also be considered through RPP (Recognition of Prior Practice).

## **Popular Music Performance is also available as a joint honours course:**

BA (Hons) Popular Music Performance & Event Management W100

BMus (Hons) Popular Music Performance & Songwriting 3C48

BA (Hons) Popular Music Performance & Music Production W382

BA (Hons) Popular Music Performance & Music Business W300

All our joint honours are weighted 50:50 between the two named subject areas. Joint honours course module names and structure may be subject to change.

For more information, visit [bimm.ac.uk](http://bimm.ac.uk).

The option modules advertised as available for BIMM Institute courses are subject to variation dependant on minimum student numbers and the availability of specialist resources at each college.

# BA (Hons) Music Business

UCAS code: N100  
3 years full-time



**Nurture your creative flair and build core skills as a music business entrepreneur in this exciting and growing industry.**

With the BA (Hons) Music Business, you'll have opportunities to expand your knowledge of the industry across a wide range of subject areas. You will develop an understanding of a broader business context with a focus on planning and forecasting, financing, creativity and digital marketing.

Our well-connected lecturers will guide and mentor your professional development. They'll support you in your project management and business skills across areas such as artist management, self-employment, traditional and digital marketing, music publishing, copyright legislation, social media, the live industry, music recording and distribution.

As your course progresses, you'll have the flexibility to choose option modules. These options give you the chance to specialise in your unique area of interest as a professional practitioner, such as:

- DIY Release Artist/Manager
- DIY Artist/Manager with Specialism
- Record Label and A&R
- Publishing and Sync
- Live Production
- Digital Economy
- PR and Marketing
- Journalism Culture and Digital Communication

You'll also experience the music business through your chosen city's gigs, musicians and venues and by automatically joining our inspiring BIMM Institute community.

You can gain hands-on industry knowledge via our work experience opportunities with a wide range of music-focused employers that you won't find anywhere else.

Alternatively, we'll wholeheartedly support you in entrepreneurial ventures of your own design.

Start your career in music business today.

## **Modules include:**

- Artist Management
- The Music Business
- The Live Music Industry
- Business & Enterprise
- The Business & Culture of Hip Hop
- Digital Arts & Branding
- Creating Tastemakers & Firestarters
- Gender & Sexuality

## **Study in:**

- Birmingham
- Brighton
- Bristol
- London
- Manchester

## **Entry requirements:**

Minimum of 2 A-levels at Grade C or above (64 UCAS points), or BTEC Level 3 equivalent, and normally three GCSEs at a minimum grade C/4, including English Language.

Applications by experienced practitioners aged 19+ without formal qualifications may also be considered through RPP (Recognition of Prior Practice).

## **Music Business is also available as a joint honours course:**

BA (Hons) Songwriting & Music Business 3C47

BA (Hons) Popular Music Performance & Music Business W300

BA (Hons) Music Production & Music Business W370

BA (Hons) Music Business & Event Management N300

All our joint honours are weighted 50:50 between the two named subject areas. Joint honours course module names and structure may be subject to change.

For more information, visit [bimm.ac.uk](http://bimm.ac.uk).

The option modules advertised as available for BIMM Institute courses are subject to variation dependant on minimum student numbers and the availability of specialist resources at each college.



# BA (Hons) Event Management

UCAS code: N200  
3 years full-time



**Develop your passion for curating and managing a wide range of events with the BA (Hons) Event Management. The course will teach you all you need for a successful career in the live music and creative industries. You'll connect with the best people in the business to turn your career ambition into a reality.**

You'll graduate with a comprehensive set of creative business and management skills for a diverse range of potential career routes. These include event promotion and production, tour management, booking agencies, event sustainability, wedding and party planning, sporting events, theatrical production, digital marketing, social media management and many more.

Our range of option modules ensure that you can build your course to reach your desired career goal and follow your individual passions.

Your day-to-day learning will be practical, relevant and cutting-edge, delivered by experienced and well-connected lecturers in small seminar-based classrooms.

You'll have access to the most exciting artists, festivals and venues in the business today. There will be countless opportunities to put the skills you learn throughout the course into practice. Plus, you'll have the chance to flex your entrepreneurial spirit by running events, festivals, club nights and more.

Our thriving BIMM Institute community will see you mix with gifted performers, writers, alumni and music industry professionals. You'll have the opportunity to get hands-on industry knowledge under your belt through placements and internships with a wide range of music-focused employers. Alternatively, we'll support you in your own entrepreneurial ventures.

Start your career in event management today.

## **Modules include:**

- Event Concept & Design
- Social Media & Digital Marketing
- Community Cultural & Sports Events
- Crowd Psychology & Management
- Tour Management & Logistics
- Event Sustainability
- Creative Commercial Events

## **Study in:**

- Birmingham
- Brighton
- Bristol
- London
- Manchester

## **Entry requirements:**

Minimum of 2 A-levels at Grade C or above (64 UCAS points), or BTEC Level 3 equivalent, and normally three GCSEs at a minimum grade C/4, including English Language.

Applications by experienced practitioners aged 19+ without formal qualifications may also be considered through RPP (Recognition of Prior Practice).

## **Event Management is also available as a joint honours course:**

BA (Hons) Popular Music Performance & Event Management W100

BA (Hons) Music Business & Event Management N300

All our joint honours are weighted 50:50 between the two named subject areas. Joint honours course module names and structure may be subject to change.

For more information, visit [bimm.ac.uk](https://bimm.ac.uk).

The option modules advertised as available for BIMM Institute courses are subject to variation dependant on minimum student numbers and the availability of specialist resources at each college.

# BA (Hons) Music Marketing, Media and Communication

UCAS code: W376  
3 years full-time



**Explore digital media and communication – and how both are central to the creation, execution and marketing of modern music. During this course, you'll focus on music business, popular culture, and the world of marketing.**

You'll learn about the rapidly growing fields of digital content creation, writing, storytelling skills, journalistic writing, audience engagement, marketing and public relations. You'll also be shown how to be a creative entrepreneur in the fast-paced technology and arts economy. Although this course has a strong theoretical and academic basis, it's highly vocational as well.

Experienced lecturers will guide your professional development. They'll support you in your project management and business skills across areas such as globalisation, self-employment, traditional and digital marketing, creative writing, cultural studies, social media, marketing and PR, app creation and various broadcast skills.

You'll expand your knowledge of broader marketing techniques and their cultural context. You'll then focus on fine-tuning your specific area of expertise in an area that interests you most, whether it's in creative writing, digital media or marketing. And, because we know that everyone's different, you'll get to choose option routes, such as:

- Cross-media producer
- Social media influencer
- Marketing managers
- Online and print journalist
- Broadcast journalist
- Podcaster
- Content manager
- PR consultant
- App creator
- Entertainment producer

You'll also have the opportunity to attend guest lectures and gain hands-on industry knowledge through unparalleled, exciting work experience placements and internships with music-focused employers. If you're more interested in exploring entrepreneurial ventures, we'll support you every step of the way.

Start your career in music marketing, media and communication today.

## **Modules include:**

- Introduction to Digital Media and Communications
- Popular Culture & Identity
- Marketing & PR
- Folk Devils & Moral Panics
- Fans & Social Media Influencers
- Music & Diversity
- Communications Techniques
- The Creative Entrepreneur

## **Study in:**

- Birmingham
- Brighton
- Bristol
- London
- Manchester

## **Entry requirements:**

Minimum of 2 A-levels at Grade C or above (64 UCAS points), or BTEC Level 3 equivalent, and normally three GCSEs at a minimum grade C/4, including English Language.

Applications by experienced practitioners aged 19+ without formal qualifications may also be considered through RPP (Recognition of Prior Practice).

For more information on the course and modules, visit [bimm.ac.uk](https://bimm.ac.uk).

The option modules advertised as available for BIMM Institute courses are subject to variation dependant on minimum student numbers and the availability of specialist resources at each college.

For more information, visit [bimm.ac.uk](https://bimm.ac.uk)

The option modules advertised as available for BIMM Institute courses are subject to variation dependant on minimum student numbers and the availability of specialist resources at each college.





## Postgraduate courses

### Why study at postgraduate level?

Master's degrees stretch your skills and build your expertise in both research and practice. Postgraduate study will ensure you stand head and shoulders above your peers and help you advance in your chosen career.

### What defines our master's courses?

We are a leading provider of specialist vocational practice-based higher education programmes that prepare students for a sustainable career in the creative industries.

Our master's courses allow you to explore professional practice in the creative industries and education at an advanced level, and generate fresh insights and new perspectives relevant to your career goals and aspirations.

*"This MA course was enough of a reason to move all the way from California. The community and network of support have been amazing. I keep reflecting on how much I've grown, it's crazy! The tutors are awesome, and they really care. I feel like I finally have answers to questions I didn't even know how to ask for the last four years of trying to learn this stuff on my own."*

**Grace Fellows,  
MA Popular Music Practice (Performance)**



## The key benefits of postgraduate study

### **Advance in your chosen career**

Having a master's improves your career prospects. It gives you the depth of knowledge you might need to apply for advanced positions in your company or industry. People with master's degrees also earn more on average than those with only a bachelor's degree.

### **Learn flexibly and autonomously**

You can choose to study full-time over 12 months or part-time over two years. Whilst we recommend committing to full-time study to benefit from feeling fully immersed in your work and research, we understand that you may not be able to put your career on hold or give up the day job.

### **Build your network**

Our master's programmes also provide structured opportunities to work collaboratively with your peers within and across disciplines, making connections and building networks you can draw on in your future career. So not only does the BIMM experience welcome you into a community of like-minded creatives working in various areas, but our alumni networks, such as BIMM Connect, are also second to none, ensuring you can stay connected and continue building your network for a sustainable and fulfilling career.

### **Explore your interests in-depth**

If you're reading this, you're probably someone passionate about the creative industries and your personal and professional development. A master's degree is the chance to dive deep into your chosen subject, exploring and experimenting in a nurturing developmental environment.

### **Develop the tools you need to change your career**

If you're thinking of switching careers (or have a dream role in mind), a master's degree can help get you there. In addition, we welcome individuals with significant professional experience in their field who want to pursue an academic route or push themselves through exploring professional practice as research.

### **Become a leader in your field**

On our master's courses, you'll be taught by the best in their fields; our staff are active practitioners, researchers, and scholars. Our master's courses are also designed to offer you opportunities to choose the focus of your learning and the work you will produce. And you'll have the opportunity to become a contributor in your chosen discipline, not just a learner.



# MA Popular Music Practice

Full-time – 1 Year  
Part-time – 2 Years



**Stand apart from others in your chosen field and lead the discussion in contemporary music with the MA Popular Music Practice. This MA is for popular music practitioners – performers, producers, composers or entrepreneurs. You'll explore your own specialism within popular music that fits with your personal career aspirations.**

During your MA, we'll help you to turn your ideas into a reality. We'll introduce you to cutting-edge research and assist you with broadening your network within the industry.

Through five modules across the year, you will apply a theoretical lens to your own and others' professional practice. Drawing on contemporary research, you will be encouraged to actively investigate areas such as popular musicology, performance and composition, the music industry and entrepreneurship, and the application of technologies to practice.

Your course will culminate in your Major Project: an extended piece of work that explores your chosen area of specialism.

Your contact time will be split between one-to-ones with a specialist from your field and lectures and seminars where you study alongside students from different disciplines. You will collaborate with your peers.

The MA Popular Music Practice is a single qualification with a capacity to provide specialist-named awards, including:

- MA Popular Music Practice (Entrepreneurship)
- MA Popular Music Practice (Performance)
- MA Popular Music Practice (Production)
- MA Popular Music Practice (Composition)

This MA course can be taken either in full-time or part-time mode. Please note that part-time study options are only available in London and Bristol.

Start your career in popular music today.

## Modules include:

- Popular Music Practice and Research
- You and the Popular Music Industry
- Popular Music and Technology
- Exploring Collaborative Practice
- Major Project

## Study in:

- London
  - Birmingham
  - Bristol
  - Brighton
- (All available full-time or part-time)

- Manchester
- (Available full-time only)

## Entry requirements:

A degree (normally 2.2 or above) or significant experience in a relevant field. Overseas students where English is not their native language may be required to meet a minimum English language requirement of an Academic IELTS 6.5. We require a minimum of 6.0 to be achieved in each band.

All applicants will be subject to interview, and a portfolio may also be requested for Recognition of Prior Learning (RPCEL).

For more information on the course and modules, visit [bimm.ac.uk](http://bimm.ac.uk).

# MA Learning and Teaching in the Creative Industries

Full-time – 1 Year  
Part-time – 2 Years



**The MA Learning and Teaching in the Creative Industries is perfect if you're looking to enter into a teaching career for the first time. It's also ideal if you're an experienced educator wanting to broaden your knowledge and skills within the field of creative arts education at both further and higher education level.**

We aim for you to become a highly creative, thoughtful and collaborative educator. You'll develop your skills, identity and agency as a teacher, as well as gaining key literacies in educational theory and research. We take a highly person-centred approach, offering expert tuition, 1-to-1 mentoring, engaging practical workshops and guided independent study.

You will develop high-level knowledge and skills across a range of areas, learning to critically examine and challenge beliefs and attitudes in order to find your own voice as an educator. These areas include:

- Teaching and supporting learning
- Assessment and feedback
- Learning theory and psychology
- Inclusivity and accommodation for learning need
- Creative and experiential approaches to learning
- Educational and practitioner-led research

This MA is offered in two distinct pathways:

## **The 'Initial Teacher Education' Pathway**

Designed for early and pre-career teachers, this pathway focuses on developing your practical and reflective skills within the classroom. It includes the introductory module, 'Teaching, Learning and Assessment', for which no prior teaching experience is required.

You will also undertake a practicum of teaching experience and lesson observation, which is recognised in forming the ITE requirements for professional formation (QTLS) through the Education and Training Foundation. We offer teaching placements for those not currently working within education. This pathway is offered both full-time over one calendar year and part-time over two calendar years.

## **The 'Continuing Professional Development' Pathway**

This pathway is designed for qualified teachers or those with over three years of teaching experience. You'll expand upon what you already know and develop deeper theoretical and pedagogic knowledge that will enrich your teaching, exploring new practices in leadership and educational change.

Because our flexible MA courses provide an educational experience that works around you, we offer this pathway part-time over two calendar years so you can continue with your day-to-day profession.

## **Modules include:**

- Popular Music Practice and Research
- You and the Popular Music Industry
- Popular Music and Technology
- Exploring Collaborative Practice
- Major Project

## **Study in:**

- London
  - Bristol
  - Brighton
- (All available full-time or part-time)

## **Entry requirements:**

A degree (normally 2.2 or above) or significant experience in a relevant field. Overseas students where English is not their native language may be required to meet a minimum English language requirement of an Academic IELTS 6.5. We require a minimum of 6.0 to be achieved in each band.

All applicants will be subject to interview, and a portfolio may also be requested for Recognition of Prior Learning (RPCEL).

For more information on the course and modules, visit [bimm.ac.uk](http://bimm.ac.uk).



# How to apply

---

Auditions, interviews and personal statements  
– we're here to help, every step of the way.



# Open days

**Experience BIMM Institute for yourself by attending one of our open days.**

We run open days across the country so that you can see exactly how we do things. There's no better way to see what the next three years of your life could look like. Most importantly, you can decide whether we're the right fit for you.

At our open days, our welcoming staff will make you feel at home straight away. You'll get a feel for our creative and friendly environment, see our state-of-the-art facilities and explore our colleges. You'll also be able to talk to our inspiring industry lecturers and chat with students about what they've been up to.

At a BIMM Institute open day, you can:

- Experience live performances from BIMM Institute artists.
- Learn about our values, courses and relationship with the industry.
- Meet our world-class lecturers.
- Ask questions about life at BIMM Institute and our wide range of industry opportunities.
- Chat to our current students to find out about their own BIMM Institute experience and how best to navigate student life.

Throughout the year, we will also hold **virtual open days** on Zoom, so you can discover everything from the comfort of your own home, and chat with our students and friendly Admissions Team.

Book your place for our virtual and face-to-face open days by heading to [bimm.ac.uk/open-days](https://bimm.ac.uk/open-days)





# The application process

**Applying to study with us puts you one step closer to following your passion, being taught by our world-class lecturers and having our incredible industry connections and unparalleled opportunities at your fingertips.**

The application process at BIMM Institute is designed to capture a variety of elements: technical ability, academic skills, passion for your subject of study and an understanding of the course you have chosen to apply for.

Information for international students is slightly different and can be found on the following page.

## **Undergraduate applications – what to expect**

Typically, performance-based courses require a combined audition/interview, whilst non-performance courses require a UCAS application only and music production courses require a portfolio and interview.

Undergraduate applications for UK students are made through UCAS. Once you've applied, our Admissions Team will reach out to you to outline exactly what you need to do.

If you are successful, you'll be offered either a 'conditional' or an 'unconditional' offer. We also welcome early audition and interview bookings, prior to submitting your UCAS application, to ensure you get a place on the course you want.

## **Postgraduate applications – what to expect**

Applications are made by applying directly through the BIMM Institute application form. You will be required to create an account on our applicant portal as part of the application process.

Once you have submitted your application, we will request additional information based on your chosen course. Once received, you will need to

attend an interview with a member of staff from the Postgraduate Team.

Subject to success, you will be offered either a conditional or an unconditional place.

## **Talk to us – we're here to help**

At all stages and for all applicants, our experienced and friendly Admissions Team are on hand. They know the ins and outs of BIMM Institute, UCAS and the application process. That's why they are available via email, phone and even live chat. Use our contact details below and don't hesitate to get in touch!

## **Call the Admissions Team:**

03442 646 666

## **Email the Admissions Team:**

[admissions@bimm.ac.uk](mailto:admissions@bimm.ac.uk)

## **Find full application information on our website**

Our website outlines the application process step by step for undergraduate and postgraduate courses. You'll find a variety of application guides as well as other resources.

Visit our website:

[bimm.ac.uk/how-to-apply](https://bimm.ac.uk/how-to-apply)



# International applications

**At BIMM Institute, we're very proud to welcome students from all over the world. It's what makes our creative atmosphere unique. We currently have approximately 1,000 international students from over 80 different countries. Our doors are always open, wherever you're from and whatever your background. If you are currently in your final year at school/college, you can begin your application process with BIMM Institute prior to completing your current qualification.**

You can apply direct to BIMM Institute as an international student, or alternatively you can apply via UCAS if you are making multiple applications to UK higher education providers.

Our website outlines the application process step-by-step for international applicants:

[bimm.ac.uk/international/application-advice](https://bimm.ac.uk/international/application-advice)

## **Scholarships for international students**

BIMM Institute offers a number of bursaries, discount schemes and scholarships as well as flexible payment plans to help international students with the costs of studying with us.

[bimm.ac.uk/international/fees-finance/](https://bimm.ac.uk/international/fees-finance/)

## **Remote auditions and interviews**

We appreciate that it may not be possible for you to visit us in person ahead of starting your course, which is why we offer remote auditions and interviews (via video or phone).

## **Entry criteria**

You will need to meet the academic entry criteria for the course you wish to apply for. These can be found on our website. When you make your application, you'll need to provide us with evidence of your qualifications.

[bimm.ac.uk/international/entry-requirements/](https://bimm.ac.uk/international/entry-requirements/)

## **English language requirements**

If your first language is not English, you may need to submit proof of your English proficiency. Should this be required, we accept a wide range of country-specific qualifications and a number of approved English language tests. Please find full details of qualifications and examining bodies we accept on our website.

[bimm.ac.uk/international/english-language/](https://bimm.ac.uk/international/english-language/)





## Visas

Overseas applicants may require a Student Route Visa in order to study in the UK. BIMM Institute is a licensed Student Route Sponsor and will sponsor your visa application subject to your application meeting our admissions and compliance requirements.

To ensure that you successfully navigate the visa application process and secure your Student Route Visa, we will provide you with a bespoke support service, including giving you advice on the documents required for your visa application and checking your supporting documents prior to the submission of your visa application.

**For more advice and information on visa-related matters, please contact the Immigration and Compliance Team:**

[immigration@bimm.ac.uk](mailto:immigration@bimm.ac.uk)

You can also get useful information about the requirements of the Student Route Visa Category at the UK Council for International Student Affairs.

<https://www.ukcisa.org.uk/Information--Advice/Visas-and-Immigration/Student-route-eligibility-and-requirements>

Alternatively, visit [ukcisa.org.uk](https://www.ukcisa.org.uk) or call (+44) 20 7788 9214.

## Confirmation of Acceptance for Studies (CAS)

After accepting your offer, and providing BIMM Institute with all required documents, you will be issued a Confirmation of Acceptance for Studies (CAS) document.

This document evidences BIMM Institute's sponsorship of your Student Route Visa and provides details about the course you will study, the qualifications your offer is based upon, and your passport information.

BIMM Institute is permitted to issue CAS to any students who meet our admissions and compliance requirements from six months before the start date of your course.

### Talk to us – we're here to help

At all stages and for all applicants, our experienced and friendly Admissions Team are on hand with international applications. They know the ins and outs of BIMM Institute, UCAS and the application process. That's why they're available via email, phone and even live chat. Use our contact details below and don't hesitate to get in touch!

### Call the Admissions Team:

+44 3442 646666

### Email the Admissions Team:

[international@bimm.ac.uk](mailto:international@bimm.ac.uk)



# Fees and finance

**Fees vary depending on whether you are a UK or international student, and whether you intend to study full-time or part-time. However, they do not vary according to subject area.**

Our Finance Team are always here to guide and update you through the process. We're able to provide advice and support on any ongoing developments when it comes to the UK's exit from the EU, and how this might affect you as an upcoming BIMM Institute student.

BIMM alumni receive a tuition fee discount of £1,000 on full-time postgraduate courses or £500 for part-time postgraduate courses.

**For our most up-to-date information regarding student finance for international and UK students and courses starting in the UK for the 2023/24 academic year, please head to our website:**

[bimm.ac.uk/fees-and-finance](https://bimm.ac.uk/fees-and-finance)  
[bimm.ac.uk/international/fees-finance](https://bimm.ac.uk/international/fees-finance)

### Student loans

Whether you qualify for student finance depends on your university or college, your course, whether you've taken a higher education course before, your age and your nationality/residency status. If you are eligible, the loan is paid directly to the university on your behalf. Postgraduate loans are also available for tuition fees and are paid directly to you, not the university.

You can find out more information on the guidelines and how to apply for a student loan at [slc.co.uk](https://slc.co.uk).

### Repayments

Your loan repayments are linked to your income. You only make repayments when your income goes above a certain threshold. Each month, you pay back 9% of any income over this amount. For the latest information on repayments for courses starting in 2023, please refer to the Student Loans Company:

[www.gov.uk/government/organisations/student-loans-company](https://www.gov.uk/government/organisations/student-loans-company)

You can also contact the **BIMM Institute Finance Team** for more information on queries you might have on tuition fees and student finance:

**Phone:** 0344 2646 666  
**Email:** [financeenquiries@bimm.ac.uk](mailto:financeenquiries@bimm.ac.uk)



Course Level	Course Level	UK Student	International Student
All undergraduate courses (single and joint honours)	Full-time (3 years)	£9,250/yr	£15,950/yr
All postgraduate courses	Full-time (1 year)	£9,950	£15,450
All postgraduate courses	Part-time (2 years)	£6,450/yr	£9,950/yr

**All information and fees quoted are correct at time of publishing but may be subject to change.**

[bimm.ac.uk/fees-and-finance](https://bimm.ac.uk/fees-and-finance)  
[bimm.ac.uk/international/fees-finance](https://bimm.ac.uk/international/fees-finance)

A variety of discounts, scholarships and bursaries are available to international students. Please visit the website for further information and eligibility.



# Financial support

---

## The Fair Access Fund

At BIMM Institute, we believe that a diverse student body provides for a creative and dynamic community. We aim to actively support access to our courses from groups of applicants who are underrepresented in higher education and face financial challenges and hardship.

The Fair Access Fund was set up to create a level playing field and equality of opportunity. It does this by offering the following:

- Financial support: Financial support for tuition fees and maintenance costs including rent
- Course material support: Instruments, software, hardware and reading materials to support you during an undergraduate course
- Engagement support: Specific support needs including counselling, additional learning support or help to access Disabled Students Allowance (DSA)

The amount and kind of support that you are awarded will depend on your circumstances. Being part of this scheme does not differentiate you from other successful applicants; access to the college hardship fund and receipt of support will be confidential.

For more information on how to qualify and apply, head to [bimm.ac.uk/fair-access-fund](https://bimm.ac.uk/fair-access-fund).

## Scholarships and bursaries

Each year, we offer a limited number of undergraduate scholarships and bursaries to talented and committed applicants and students in financial hardship.

That's because we're dedicated to supporting and offering opportunities to aspiring music professionals – no matter their background or financial situation.

Further information on our scholarships and bursaries for 2023/24 will be available on our website.

[bimm.ac.uk/scholarships-bursaries](https://bimm.ac.uk/scholarships-bursaries)

## Scholarships for international students

BIMM Institute offers a number of bursaries, discount schemes and scholarships as well as flexible payment plans to help international students with the costs of studying with us.

[bimm.ac.uk/international/fees-finance/](https://bimm.ac.uk/international/fees-finance/)





# Join our community

---

**Whatever your platform of choice, you can follow us for student stories, live performances, exclusive masterclasses, behind-the-scenes content, city guides, tips and advice from industry professionals, podcasts, mini-documentaries, and so much more.**

Subscribe to our YouTube channel at [tvbimm](https://www.youtube.com/tvbimm) and watch the likes of:

- Sub\_Terrain: Music 2000 – How a PS1 Game Helped Bypass the Gatekeepers of the Music Industry
- The Impact of the Windrush Generation with Punit Kavia
- BIMM Institute Masterclass: IDLES Talk Credibility, Authenticity and Opportunity

[youtube.com/tvbimm](https://www.youtube.com/tvbimm)

Follow us via:

- Facebook: BIMMinstitute
- Twitter: BIMM\_Institute
- Instagram: bimm\_stagram
- TikTok: bimm\_institute

## Ask a student

Want to know more about studying at BIMM Institute? Our students are online and ready to help. Simply go to our site and ask our current students whatever you'd like, such as why they chose BIMM Institute and their course, what it's like living and studying in our different locations, or what they love about being part of Europe's largest music student community.

[bimm.ac.uk/ask-a-student](https://bimm.ac.uk/ask-a-student)





# Contact information

**To apply to BIMM Institute, book an audition  
or ask us a question, please don't hesitate to  
get in touch.**

BIMM Institute Head Office  
2 Bartholomews  
Brighton  
BN1 1HG

Tel (UK): 0344 2 646 666  
Tel (Int): +44 1273 626 666  
Email: [admissions@bimm.ac.uk](mailto:admissions@bimm.ac.uk)  
Web: [www.bimm.ac.uk](http://www.bimm.ac.uk)

## College locations

BIMM Institute Birmingham  
93-96 Floodgate Street  
Birmingham  
B5 5SR

BIMM Institute Brighton  
38-42 Brunswick Street West  
Hove  
BN3 1EL

BIMM Institute Bristol  
St James' House  
Moon Street  
Bristol  
BS2 8QY

BIMM Institute London  
Barclay House  
Effie Road  
SW6 1EN

BIMM Institute Manchester  
Bank House  
Faulkner Street  
Manchester  
M1 4EH



BIMMInstitute



BIMM\_Institute



tvbimm



bimm\_stagram

## Thank you

We'd like to thank all our students and staff for  
appearing in and contributing to our prospectus.

## Disclaimer

This prospectus was printed in September 2022. It  
contains information on BIMM Institute courses and  
programmes that are intended to run for students  
wanting to start their higher education journey in 2023.

We've made every effort to ensure that the information  
provided is accurate and correct at the time of printing.  
However, the information contained in this prospectus  
is subject to change without notice.

Please note that courses and course content are  
regularly reviewed and may be subject to change.  
Courses themselves are subject to availability.

## Did you know?

Our prospectus is 100% recyclable.

