



BIMM
INSTITUTE

Manchester

Manchester Accommodation and City Guide

2023/24

bimm.ac.uk

Contents

Welcome	3
About Manchester	4
My Manchester	11
Accommodation guide	12
About BIMM Institute Manchester	18
BIMM Institute Manchester lecturers	20
BIMM Institute Manchester courses	22
Your city	26
LGBTQ+ Culture in Manchester	28
Music resources	30
Join us in Manchester	34

Welcome

As the College Principal for BIMM Institute Manchester, I know how important it is to choose the right place to study and start your education and career off on the right path.

Like many of you, I knew I wanted to my life to be in music but it was only when my Mum suggested I think about studying it formally that this dream started to become a reality. As I look back on this time, all of my friends were going to college and university and I had my mind set on doing English – because I was good at it. What I realised was that when choosing what you wanted to do for the rest of your life, choosing something because you were good at it wasn't necessarily the best option. Music has always been my passion and I decided to take a chance and audition for a place at university to study it. Eight years later, I have a first-class degree, a Master's degree with distinction and a PhD – all of which are based in music.

Passion is the heart of the music industry, and if you are passionate about a life in music, I can think of nowhere more suitable for you than BIMM – the UK and Europe's leading provider of contemporary music education.

Manchester is an incredible, multifaceted city with many subtleties and scenes and our college reflects this in the student cohort and the great range of talent and experience represented in our teaching team. The music scene here is one of the most renowned in the world and for many of our staff – those of us who moved here from other parts of the UK or the world, or those that have been settled here for years – the city continues to enthrall and captivate us.

Just like all the lecturers here at BIMM Institute Manchester, I am industry active and continue to write, record, produce and perform music. All of this feeds directly into your education in a relevant, timely and practical way.

If you're looking for a creative, successful and sustainable career in the music industry then I look forward to welcoming you and being a part of your journey.

Nick Donovan
College Principal
BIMM Institute Manchester

About Manchester

Manchester is the music capital of the north. Just the right size to explore on foot, there's a hell of a lot going on for a relatively small city that was voted by the New York Times as one of the top 50 places in the world to visit.

Manchester is internationally recognised as being a city with a great musical history thanks to the impressive list of bands that have called the city home, such as Oasis, Happy Mondays, Joy Division, New Order, The Smiths, Elbow and Everything Everything. New talent keeps emerging. The scene continues to flourish with The 1975, Pale Waves, Blossoms and rapper Aitch (who's signed to the homegrown Northern Quarterz label).

Live music is still very much a part of any night out in Manchester, with several streets dedicated to live music. Manchester Academy 1, 2 and 3 are just a short walk from the City Centre, as are the O2 Apollo Manchester and Manchester Arena. Venues such as Gullivers, YES and Gorilla are the perfect places to catch the best new bands.

Manunians also love a festival. And in Manchester, big names flock to play at the likes of Parklife and Dot to Dot. It's also home to Neighbourhood, where some of Manchester's most prestigious music venues join together to host a one-day event. Over 100 artists and bands from all over the world perform at this friendly and diverse event.

This is Manchester: exciting, independent and always innovative.

Manchester life

The best part about Manchester is discovering its backstreet secrets for yourself. You can get free maps from the Visitor Information Centre at Piccadilly Gardens. It's also really well located for trips to the surrounding cities of Liverpool, Leeds and Sheffield – all of which boast a solid live music scene.

Oxford Road

Our Great Marlborough Street college is not-so-quietly nestled just off Oxford Road (one of the busiest bus routes in Europe!), right by the train station. It's a great place to start exploring. The O2 Ritz Manchester and Gorilla are two of Oxford Road's most well-known establishments and are some of the larger-scale live music venues in town.

There's also a good mix of bars and clubs in the area. Check out The Font for bargain cocktails, Grand Central for Metal fans, and HOME cinema and gallery for independent films and consistently impressive free exhibitions.

The Northern Quarter

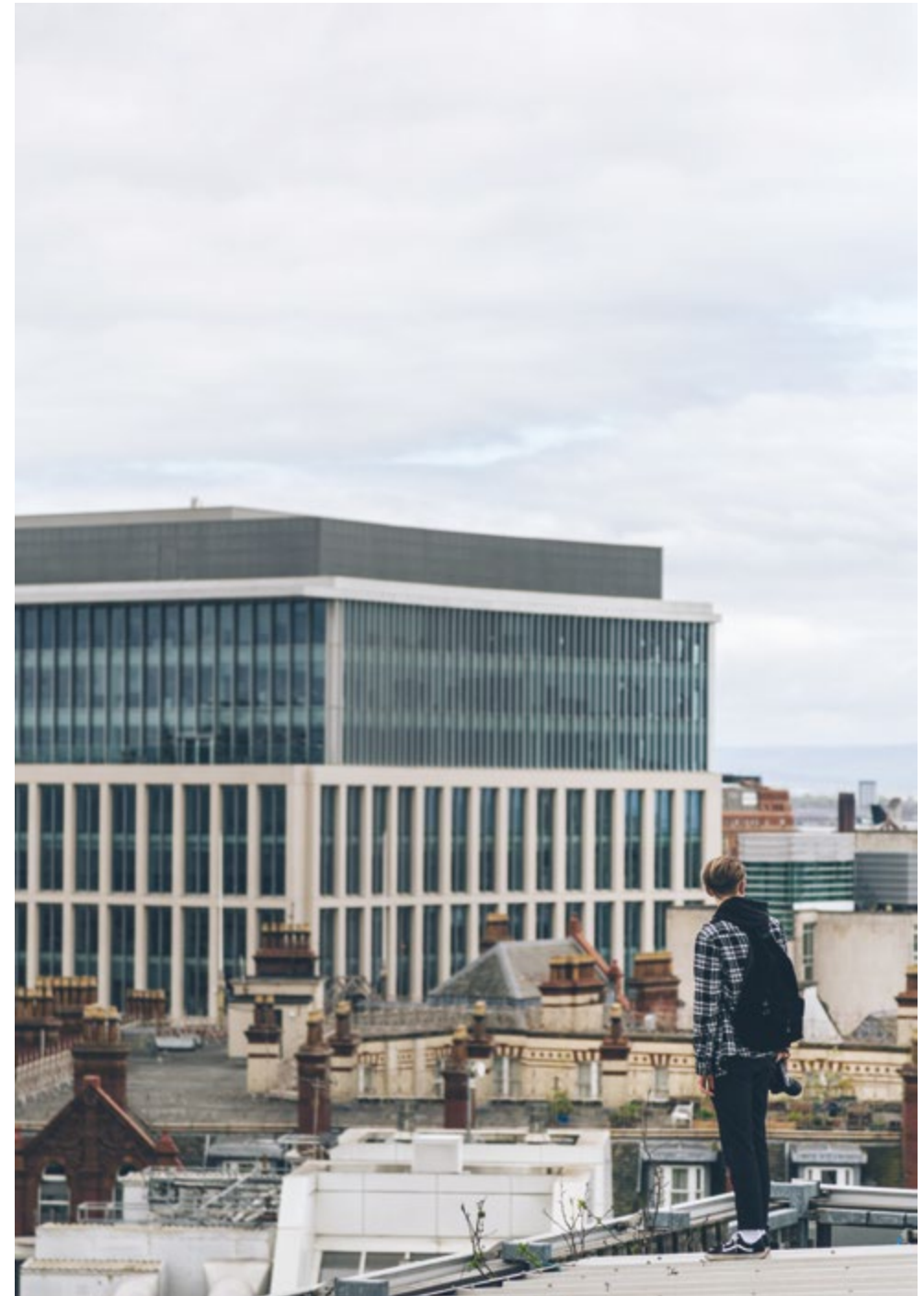
Located a few minutes from our second Manchester college (Bank Chambers), The Northern Quarter is regarded as hipster central. Here's where you'll find all the record stores, vintage clothes boutiques and indie coffee shops you'll ever need.

The nightlife here includes quirky pop-up bars and great local gigs in pub basements. Make sure you visit Affleck's Palace, a cornerstone of Manchester's alternative history and a mecca for retro clothing, furniture, jewellery and oddities.

Nightlife

With four universities, Manchester has a huge student population – and there are plenty of student club nights and events going on to suit all music tastes. For metal and rock, gigs tend to be at the Academy venues up Oxford Road, and you can try Satan's Hollow for a late one.

For Jazz fans, try Matt & Phreds. Classic Indie lovers will love 42nd Street and 5th Ave. South has a good variety of nights too and 2022NQ is a basement venue attracting famous names. You'll normally find out what's going on thanks to enthusiastic promoters handing you lots of flyers.





Festivals

Manchester is home to several festivals and events over the year. The biggest are Manchester International Festival (hosting big names in theatre, music and art), Park Life and The Warehouse Project – an amazing live music/clubbing experiment running for several months from September.

There's also a strong underground music scene. This includes big events like A Carefully Planned Festival – held over several venues in the city centre – and Sounds from the Other City in Salford. There's also Manchester Pride in August, the Christmas markets, and a mix of food, drink and arts festivals.

Shopping

Manchester Arndale in the middle of town is the main shopping centre with all the big names. For top-end brands, try King Street, and for more vintage tastes try the Northern Quarter. The Trafford Centre, a short bus ride away in Old Trafford, opens until 10 pm and has a huge range of shops and restaurants. For food shopping, there's a medium-sized Aldi supermarket on Bridge Street in the centre and a range of small Spar and Sainsbury's shops along Oxford Road. Larger supermarkets are all around the outskirts of the city.

Make sure to visit 'The Curry Mile' in Rusholme (past the universities up Oxford Road) for cheap but good quality Indian food. China Town, just off Portland Street, has a wide choice of Chinese, Thai and Japanese places to suit any budget. Close by there's a really good fish and chip shop called Portland Plaice.

In the Northern Quarter, check out Sugar Junction for a quaint vintage tea-room. Almost Famous, Luck Lust Liquor and Burn are amazing for deliciously dirty burgers and quirky Mexican street food.

Things to see and do

Manchester has a great art scene, and most of the galleries offer free entry. Manchester Art Gallery in town has a late-night opening on Thursdays and the Whitworth Gallery up Oxford Road lies in a huge park. Trust us – it's well worth a visit.

For history and architecture, check out the amazing Neo-Gothic John Rylands Library on Deansgate, Manchester Town Hall and Manchester Cathedral, which is occasionally home to live music. All the museums in Manchester are free and include The Museum of Science and Industry, Manchester Natural History Museum and the Imperial War Museum.

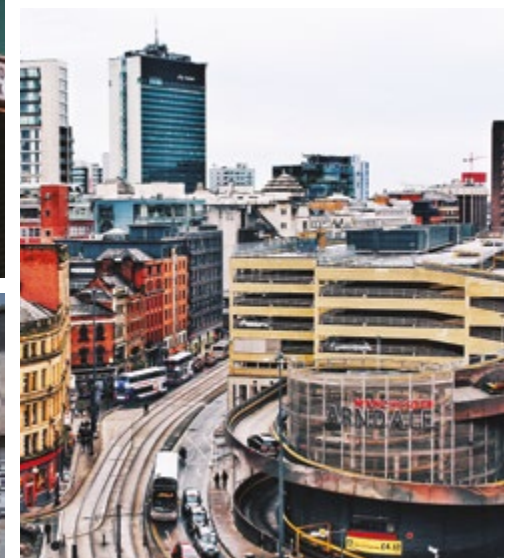
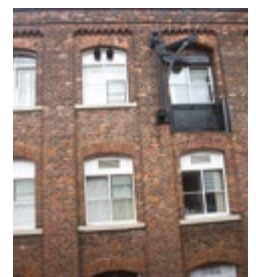
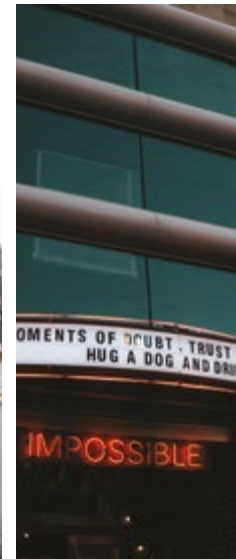




Culture

Manchester is a highly creative city with a diverse cultural scene and a wealth of theatres, galleries, live music and cinemas. Some of the most popular places exhibiting the best of culture in the North are:

- Manchester Academy (Oxford Road): A great gig venue hosting gigs most nights
- Ritz (Whitworth Street West): Right near the Great Marlborough Street building and a brilliant venue. It's a Grade 2 listed building that was built in 1927. It still has its original sprung dance floor!
- Manchester O2 Apollo (Stockport Road): A bit further out of the city centre, this venue hosts some huge acts
- Manchester Arena (Trinity Way): Attached to Victoria Station
- Ruby Lounge (High Street): This is a small venue that hosts both new and established acts, and a variety of great club nights. It's also one of our end of term venues
- Gorilla (Whitworth Street West): Another of the venues used by BIMM Institute, this is a bar, restaurant and gig venue
- Manchester Museum (Oxford Road): Here you can see some Egyptian mummies, dinosaurs and live reptiles
- Manchester City Gallery (Moseley Street): A central location where you can see a range of fine and decorative art
- MOSI (Liverpool Road): An interactive museum where you can journey through Manchester's heritage using sights, sounds and smells. The aircraft building is well worth a visit!
- The Imperial War Museum (Quay West, Trafford Wharf Road): Explore the impact of modern conflict on people and society
- The Lowry (Salford Quays): Hosts three theatre spaces with a diverse programme and two gallery spaces with a focus on the work of L.S Lowry
- Palace Theatre and Manchester Opera House (Oxford Street): Home to both major and up and coming West End shows
- Royal Exchange Theatre (Cross Street/St Ann's Square): The Royal Exchange houses plays, workshops, a craft shop, cafe and costume hire
- Manchester Craft Centre (Oak Street): This hidden Northern Quarter gem houses 30 resident artists and makers. Pop along to see craftsmen creating and selling original works from jewellery to paintings and ceramics
- HOME (Tony Wilson Pl): An international centre for contemporary visual arts and independent film. It's merged with Manchester's library theatre company
- Bridgewater Hall (Lower Mosley Street): The permanent home of the Halle orchestra, this Hall hosts a variety of music and dance events





Piran Aston
Music Business

If you decide to come to BIMM Institute Manchester in the autumn, we can't wait to meet you. To get the most out of your time as a Fresher, we asked BIMM student Piran Aston to guide you through all Manchester has to offer so you can make the most out of the big move.

My Manchester

Culture up

Manchester offers so much in terms of culture. To begin with, we have the Gay Village. This place is beaming with friendly faces and great nights out. With its cheap drinks, fun music and being right in the heart of the city centre, it's a no-brainer.

If clubbing isn't your thing, then exploring other cultural hubs such as the Manchester Art Gallery and Whitworth Art Gallery is a great way to explore the history of the city's art scene. Manchester Museum is also a fantastic place to gain more knowledge about the city that you'll call home for three years (or more).

Live and loud

Manchester has some brilliant live music venues! I'll start off with YES. In the evenings, you'll find yourself surrounded by friendly people enjoying brilliant music. DJs in the bar, live music in the basement and the brilliant Pink Room make this music venue an incredible cultural hub. They bring some of the world's best new bands to Manchester. Blossoms, Snail Mail, Homeshake and Shame have all graced their stage.

Another favourite is Fairfield Social Club. Not only is it a live music venue, but it also does great food. They host beer festivals along with the famous GRUB Food Fair events. These showcase local food vendors who cater to all tastes.

If you're into your techno, house or grime, you would have heard of The Warehouse Project already. They've moved down the road from the famous Store Street to Mayfield Depot (an old abandoned train station with a huge open space and a brilliant sound system). WP boasts one of the greatest clubbing experiences in the country.

HATCH is another incredible space. DJ and acoustic performances are prominent in this outdoor venue, not to mention the amazing food and drinks on offer! It's situated under the Mancunian Way, just a stone's throw from BIMM Institute on Great Marlborough Street.

Other live music venues worth checking out include Gorilla and the O2 Apollo. Head to the smaller venues such as The Castle Hotel, AATMA and Gullivers. You'll no doubt find your new favourite artist in one of these venues, so get down and support the local music scene.

Shop 'til you drop

The Northern Quarter is great for shopping, especially for small businesses. It houses a great range of vintage clothing stores and charity shops for you to grab a bargain.

If you love vinyl, Piccadilly Records is the place for you. They cover pretty much every genre from ambient to metal. Vinyl Revival is also a brilliant option if you're looking for rarities and more obscure releases. Afflecks is also great for second-hand clothing, vinyl, jewellery, fancy dress and more.

Manchester is a huge city with something for everyone, so make sure you expand your horizons and explore every corner.

Accommodation guide

One essential thing you must ensure you have arranged prior to your studies at BIMM Institute Manchester is your accommodation. Your living arrangement can be an important factor in your success as a student.

We do not have halls of residence at BIMM Institute Manchester, which means you must find housing privately. However, we have various resources available to help you with every step of the process.

Manchester hosts various possibilities for accommodation such as flats, shared houses, and private halls. However, as Manchester is a university city, there is a heavy demand for student accommodation. We advise you to look as early as possible to find a place that suits your needs.

Halls of Residence

The following halls are central and within walking distance to all three of BIMM Manchester's buildings, public transport links and amenities.

You will be able to request in-person or virtual tours of the spaces and costs will be listed on each webpage.

Unite Students

- New Medlock House, 25-45 Chester St, Manchester M15 6JX
- Piccadilly Point, 23 Berry St, Manchester M1 2AD
- Artisan Heights, 3 New Wakefield St, Manchester M1 5AA
- Mill Point Liberty Living Plc, 29 Berry St, Manchester M1 2AR
- Kincardine Court Kincardine Rd, Manchester M13 9JA
- Bridgewater Heights 1 Great Marlborough St, Manchester M1 5NR

Unite Telephone: 0300 303 8642 (UK)

Host Students

Cavendish Place
20 Wilmott St, Manchester M15 6AS
Telephone: 01225-585-060

Campus Living Villages

Rusholme Place
Rusholme Pl, Rusholme, Manchester M14 5TE
Telephone: 0161 850 6664

Mansion Student

Mansion Point
1 Cromwell Range, Manchester M14 6FQ
Telephone: 0800 652 7844

BIMM Manchester also have a partnership with Manchester Student Homes, their website is below. Feel free to get in touch with them for any guidance on how to secure accommodation:
www.manchesterstudenthomes.com/
0161 275 7680
manchesterstudenthomes@manchester.ac.uk

Private rental accommodation

If you cannot find a suitable spot in halls or if it's not your preferred option, there are plenty of letting agents within the city to support you finding a student house share or flat share.

Most letting agents will require you to be in a group before you approach them for a property. To make connections and find housemates you can join our BIMM Manchester freshers group.

Once you have a group together, you can approach local student lettings agents to find properties:

- accommodationforstudents.com
- fish4lettings.co.uk
- findaproperty.com
- latesthomes.co.uk
- property.men.vivastreet.co.uk
- ineedaplace.co.uk
- zoopla.co.uk

Please be aware that the agents listed have not been visited or vetted in any way by BIMM Institute Manchester

and you should, therefore, use them at your own risk. Ask what charges you will have to pay before you enter into an agreement with them. If you do have any concerns about the agency, contact the National Association of Estate Agents at naea.co.uk

House shares

You could also find a number of existing house shares in Manchester where you could join an established group of people. These can be found on the following websites:

- gumtree.co.uk/manchester
- accommodationforstudents.com
- sparerroom.co.uk

Finding housemates

Facebook is a good way to link up with people who are already at BIMM Institute or who are starting at the same time as you.

Some students set up groups prior to starting BIMM in order to find housemates. Using this facility is a great way to post information about yourself, the type of housing you are looking for and any rooms that you or others may know about, which are available for rent.

It's the perfect place for students to acquaint themselves with their fellow course friends and find appropriate housemates. Search for group names such as 'BIMM Freshers'.

House viewings

Tips for viewing properties:

- We recommend viewing a property at least twice. You'll be more likely to notice problems the second time around.
- Take someone with you or let someone else know exactly where you are when you visit a property, just to err on the side of caution.
- It's also a good idea to visit the area at night. If you do this, please ensure you stick to the point above and take someone with you.
- Make sure you and all your other housemates view

the property. Don't take someone else's word that the property is right for you.

- Compare a range of different landlords and properties.
- Take your time and don't let landlords pressure you – there is a surplus of good properties in the area and you will find somewhere you like.
- When you go to view, take notes and photos and use our checklist to make sure you don't miss anything.
- Get informed – knowing your rights will help you view properties more critically and put you in a stronger negotiating position.

Frequently asked questions

How do I know what to look for when viewing a property?

We have checklists and tools to help when you're viewing properties. Use the checklist below to make sure you ask the right questions and look into all the key areas:

- Does the place look well maintained?
- Will you be warm enough in winter?
- Will it be safe and secure?
- Does it have the space and facilities you need (i.e. washing machine, heating, fridge/freezer)?
- Are the current tenants happy with the landlord?
- Is the property affordable and good value?
- Is the area suitable for your needs?

Will I need to sign a contract to rent a room?

Most landlords/agents will ask you to sign a tenancy agreement. This is a legally binding document setting out each party's rights and responsibilities. By signing it, both you and the landlord have certain rights protected in law which can't be overwritten by the contract. Before you sign, make sure you understand all the clauses, so there can be no nasty surprises after you've signed.

If asked to sign an agreement, it is likely to be an Assured Shorthold Tenancy Agreement and will normally last for at least six months, after which the tenancy will run on a monthly basis. However, many tenancies run for a fixed term, i.e. July 1st, 2020 to June 30th, 2021. In this case, make sure that you are happy with the length of the contract as it is very unlikely that you will be able to end the tenancy early.

The terms of the agreement must be in plain, intelligible language and not be unfair. For example, the tenant should not be restricted from breaking a fixed term agreement if the landlord is not in the same way, nor should they be subject to unreasonable rent increases or held to unreasonable penalty clauses (for example, extortionate charges for late payment of rent).

Get a tenancy agreement checked first by an informed person, such as an advisor from the Citizens Advice Bureau. If the landlord/agent won't let you take the contract away to get it checked first, think twice about signing it. Spend a little extra time in getting your contract checked out to save time, money and stress later in the year.

What is the landlord responsible for?

- Heating and hot water installation
- Baths, sinks, basins and other sanitary installations
- The structure of the exterior of the property
- Repairs and safety of gas and electrical appliances
- Ensuring that any furniture that he or she supplies meets fire resistant requirements

What is the tenant responsible for?

- Water and sewage charges
- Utility bills, such as gas, electricity, telephone and internet connection (if any)
- Taking care of the property
- Using the property in a responsible way
- Paying the rent as agreed
- Keeping to the terms and conditions of the agreement

What rights do both the landlord and tenant have?

The landlord or his agents have the right to access the property at reasonable times during the day to carry out repairs for which they are responsible for and inspect the condition of the property. 24 hours' written notice to inspect the property must be given. Arrangement for access to the property must be written into the contract.

Tenants have the right to possess and enjoy the property during the tenancy without any interruption from the landlord. This clause does not limit any of the rights made under this agreement that the tenant has allowed the landlord/landlady to exercise. Neither does it prevent the landlord from taking lawful steps to enforce these rights if the tenant should break any of the terms of the agreement.

What bills can I expect to pay?

Depending on your own personal consumption, you can expect to pay £10 - £15 per week for utility bills. Remember that if solely full-time students occupy a property, then they are exempt from Council Tax.

What is a deposit?

The deposit is generally the equivalent of one month's rent. Your landlord or agent must, under the 2004 Housing Act, protect your deposit within 14 days of receiving it as part of the Tenancy Deposit Protection Scheme and provide you with certain information relating to this.

This scheme ensures that deposits paid to the landlords are kept safe and that tenants get their deposits back at the end of the tenancy, so long as there hasn't been a breach of the tenancy agreement, such as unpaid rent. Remember that the money held as a deposit remains yours at all times and not the landlord's, and only by mutual agreement should any money be deducted.

Your deposit, or part of it, will be withheld if you:

- Fail to return ALL keys at the end of the tenancy
- Are responsible for any damage to the property, either wilful or negligent
- Have not cleaned the property adequately
- Have left rubbish which needs removing from the property

Can I deduct my deposit from my last month's rent?

No, because to do so would be a breach of your contract. It is important that rent and deposits are separate.

What is a guarantor, and will I need to sign a guarantor form?

A guarantor is someone who signs an agreement to pay for any rent or damages if the tenant fails to pay up. The guarantor will most likely be a parent or guardian.

Some landlords ask for a guarantor, but not all do. So, there are still plenty of properties to choose from if you don't have someone who will be a guarantor for you – you'll just need to look around. A guarantor is taking on quite a large responsibility, particularly if you are signing a joint contract. For example, if your housemate hasn't paid their rent, your guarantor could be made to pay.

Do not sign a contract that requires a guarantor form until you and your guarantors have read the form and agreed to sign. If you have already signed a contract, but a guarantor refuses to sign, you might not get the keys to the property. A good landlord will give you copies of the forms and time to check them through.

Ask the landlord to accept a limited guarantee from your guarantor, e.g. just covering your rent/damages. Tell your guarantor not to give too much personal information on the form, e.g. NI number, bank details or passport details should not be necessary.

I am leaving the house a few weeks early - can I get my deposit back early?

It may be possible for you to come to an arrangement for the early return of the deposit, but the landlord/agent will obviously want to inspect the house and check all rent is paid.

We cannot afford to pay the final utility bills. Can we leave our deposit or the landlord/agent to pay for them?

No, not if the bills are in the name of the tenants – the utility companies will chase the named persons and not the landlord/agent. Your deposit will be protected as part of the Tenancy Deposit Protection Scheme and therefore cannot be used by the landlord or agent.

Further questions

If you have any further questions, please do not hesitate to contact the Student Support team on 0161 244 8210 or studentsupportmanchester@bimm.ac.uk



About BIMM Institute Manchester

BIMM Institute Manchester has two purpose-built buildings: The Great Marlborough Street building and the Bank Chambers building. Both colleges comprise of rehearsal, performance/practice and meeting spaces. Each site has its own unique history and character, making them exciting buildings in which to learn and create.

BIMM Institute Manchester facilities

There are five study and two reading areas across both sites, communal areas for socialising and collaboration, and a careers hub for entrepreneurial projects. Students will also have access to state-of-the-art, loanable facilities. These feature a wide range of professional equipment and music software, including Pro Tools, Logic and Ableton to help you with your projects and studies.

There are four fully kitted out Mac suites and a high-spec range of equipment available to loan, including mics, guitars, keyboards, cameras, mobile recording equipment and even DJ decks. Our Bank Chambers site has two state-of-the-art studios, control rooms and edit suites where students are taught about production and how to record music to a professional, industry standard.

Our production building on Merchant Exchange is exclusively designed for our growing music production cohort. It's fully equipped with three mac labs, four edit suites and one state of the art studio which is connected accross the building. There's also a common room area reserved for relaxation.



BIMM Institute Manchester lecturers



**Neil Young,
Head of Theory**

Theory specialist and twice nominated (long list) for a Grammy, Neil is a jazz guitarist and composer/arranger. Alongside his own work, he has recorded and performed with many artists, such as The Earlies, Barbarossa, Sara Lowes, Badly Drawn Boy, King Creosote, Blue's Simon Webbe, and Denny Laine from Wings.

Neil has appeared at jazz festivals worldwide and performed on numerous BBC 6 Music sessions, receiving international critical recognition for his writing from JazzTimes, the Grammy Awards and the International Songwriting Competition.



**John McCready,
Course Leader**

John has lectured in music, journalism and popular culture at Leeds College Of Music, Huddersfield University, Edge Hill, Staffordshire, Salford and John Moores University. He has written pieces for publications such as NME, The Face, Mojo, Word, Radio Times and Mixmag.

He also worked at BBC television as a Producer and Music Consultant on many music programmes (such as documentaries on The Beach Boys and The Carpenters) and was Programme Consultant on Channel 4's John Lennon Night.

John was Press Officer for Network Records, having run campaigns for Techno legends Derrick May, Kevin Saunderson, Juan Atkins and the chart-topping 'Junior KLF' Altern 8. John is a former Hacienda DJ, having been resident for five years in the Gay Traitor bar.



**Rebecca Pickles,
Course Leader**

Rebecca was one-third of girl-group, The Pipettes. Together, they notched up two Top 40 UK hits, a Billboard Top 5 and a Top 10 in Japan. She's toured extensively worldwide and has played numerous festivals, including Glastonbury's Pyramid Stage and the main stage at Reading/Leeds. She has also worked as an award-winning venue and event manager at music venues in both Brighton and Manchester.

Rebecca has since made the move to outdoor events, currently spending her summers working on arts and music festivals around the UK. As a vocalist, she still performs live with new project See Thru Hands.



**Richard Jupp,
Drums Lecturer**

Richard is the co-founder, songwriter and drummer in the award-winning band Elbow, with whom he performed and recorded for over 25 years. In that time, he toured the world, playing at all of the major music venues, festivals, arenas and stadiums.

The band have been nominated for – and won several major music awards – including a BRIT, NME, Ivor Novello and Mercury Prize.

Rick has a special interest in drumming as music therapy and is a patron of The National Autistic Society. Rick also offers one-on-one drum lessons at home in his specially designed drum shed.



**Marco Migliari,
Music Production
Senior Lecturer**

Marco worked for 12 years at Peter Gabriel's Real World Studios as a studio engineer and technical manager. In 2008, he chose a freelance career and set up Green Room Studio within the Real World complex, where he currently works as a producer, mixer, engineer and mastering engineer.

Marco's most recent engineering credits include Aretha Franklin (Sony Music US), Buddy Holly (Universal Music US), Roy Orbison (Sony Music US), Pavarotti (Universal Music UK), and The Beach Boys (Universal Music US). In 2013, he engineered the soundtrack for Xbox blockbuster 'Halo 4' with producer Neil Davidge.



**Beth Parnell,
Music Marketing, Media and
Communication Lecturer**

After graduating from Sheffield University with a BA Hons Degree in Journalism in 2002, Beth began her career as Press and Marketing Manager at Manchester-based concert promoters SJM Concerts.

Beth has worked at both independent PR agencies (Purple PR) as well as world-renowned music businesses. She took on the role of Regional Press Officer at Sony Music before becoming a Press Officer with RCA Records.

Beth has worked on press campaigns for artists such as Grizzly Bear, Calvin Harris, MGMT, Hurts, Courteeners, and Marina and the Diamonds. Beth set up her own music PR company, Bandwagon Press, in 2013.

BIMM Institute Manchester courses

Further education courses:

- Level 3 Extended Diploma in Songwriting
- Level 3 Extended Diploma in Music Performance - (Guitar, bass, drums, vocals)
- Level 3 Extended Diploma in Music Production

Single honours undergraduate degrees:

- BA (Hons) Music and Sound Production
- BA (Hons) Electronic Music Production
- BMus (Hons) Popular Music Performance (Guitar, Bass, Drums, Vocals, Keyboards)
- BMus (Hons) Songwriting
- BA (Hons) Event Management
- BA (Hons) Music Business
- BA (Hons) Music Marketing, Media and Communication

Joint honours undergraduate degrees:

- BA (Hons) Music Production & Music Business
- BA (Hons) Music Business & Event Management
- BA (Hons) Popular Music Performance & Music Business
- BA (Hons) Popular Music Performance & Music Production
- BA (Hons) Popular Music Performance & Event Management
- BMus (Hons) Popular Music Performance & Songwriting
- BA (Hons) Songwriting & Music Business
- BA (Hons) Songwriting & Music Production

Postgraduate courses:

- MA Popular Music Practice



BIMM Institute Manchester resources

BIMM Institute Manchester students have access to a collection of books from our well-stocked library of core texts, as well as resources, such as the online library Ebsco and our virtual learning environment (VLE) Moodle. BIMM Connect is a new resource where students can collaborate with musicians and industry professionals to work within the BIMM Student and Alumni Community, set up projects and groups, post your events and much more.

With such an array of resources, spaces and facilities, BIMM Institute Manchester is an exciting and stimulating environment in which to work and study.

BIMM Institute Manchester Student Associations and Clubs

The BIMM Institute Manchester Student Association is running to help build a strong student community here at BIMM Institute. They will be running various events, socials, meet-ups and mixers to allow students to meet each other, make friends, connect and collaborate.

The Student Association have helped to launch a number of societies and groups, including basketball, football, media and musical theatre society, BA2 and BA3 songwriting society, sound engineers' society, and more coming soon.

Students can launch a new society by downloading the forms on the Student Association Moodle page and getting in touch at the email address below. More information is up on the Student Association Moodle page and students can get in touch by emailing studentassociationmanchester@bimm.co.uk

BIMM Institute Manchester location

BIMM Institute Manchester has three buildings. One is located at: 8 Great Marlborough Street, Manchester, M1 5NN. The other is situated at: Bank Chambers, Faulkner Street, Manchester, M1 4EH and the third is located at BIMM Manchester, Merchant Exchange, 17 – 19 Whitworth St West, Manchester, M1 5WG.



Your city

BIMM Institute Manchester is well connected to the rest of the city via public transport.

Bus

The closest bus stops to Great Marlborough Street (on the main student route) are located on Oxford Road, by the Dancehouse coming into the city centre, and by the Palace Hotel to leave the city centre. Bank Chambers is located a few minutes from the main bus station at Piccadilly Gardens. Buses at these stops frequently run between Manchester City Centre and popular student areas, such as Rusholme, Fallowfield and Withington.

Manchester has the busiest bus route in Europe due to the number of universities on the Oxford Road corridor. As a result, you will rarely have to wait more than a few minutes for a bus during the day. The majority of buses on this route go from Piccadilly Gardens to South Manchester, straight down Oxford road. Check out the routes for each bus number below:

- 142 or 42 – Piccadilly Gardens – Universities – Rusholme – Fallowfield – Withington – Didsbury Village – East Didsbury

- 143 – Piccadilly Gardens – Universities – Rusholme – Fallowfield – Withington – West Didsbury

- 43 – Piccadilly Gardens to Manchester Airport

- 147 – Manchester Piccadilly Train Station – Universities – Manchester Royal Infirmary and other hospitals

For details about service times, prices and route information, please refer to tfgm.com

Train

For those living outside of the city, BIMM Institute is easily accessible from either Piccadilly or Oxford Road Station. Oxford Road station is the closest to our Great Marlborough Street college, and Piccadilly Station is closest to our Bank Chambers college.

Metrolink

Manchester Metrolink has been expanding throughout the city and is a quick and easy way to travel across Greater Manchester. Metrolink runs on several lines including Salford Quays/Media City and East Didsbury. For more details, head to metrolink.co.uk

Bike

Manchester is very cyclist-friendly, with accessible cycle lanes. If you live a short distance from the college, it might be the most cost-effective way to travel. Find out more about cycling in Manchester at cycling.tfgm.com

Hospitals, GPs and dentists

While living in Manchester, it's really important that you register with a GP. It's easy to do and means that you can access medical care if and when you need it. If you are at home for the holidays, you can still see your family GP if needed - they're normally able to see you as a visitor or an emergency patient.

You'll have to visit your chosen practice to register with them (often via showing proof of your address). To find your local GP or hospital while in Manchester, you can head to the NHS website: nhs.uk

There are also GP services near our college locations. Cornbrook Medical Practice (Boundary Surgery) is near our Great Marlborough Street building while City Health Centre is a short walk from our Bank Chambers college. The Docs (Bloom Street) is also near the two (approximately a 5-minute walk).

If you feel unwell and want some advice on what to do, please call NHS Direct (111). This is a 24-hour confidential service that also offers information on your nearest GP, dentist, pharmacist or out of hours service. For an emergency, please dial 999.

You can also register for an NHS dentist. If you're ever in need of emergency dental treatment, help is available at the University Dental Hospital. To find your nearest dentist, head to the NHS website: nhs.uk

Even though it's an NHS service, there are normally charges for dental treatments and check-ups.

Living costs

Below are some guidelines for the average price of accommodation in Manchester.

Accommodation

- Student Halls: £440 - 640 PCM (inc. bills)

- House/Flat Share (two or more people):

£240 - 400 PCM (not inc. bills)

As a full-time student, you are not liable to pay council tax if you are house sharing with other students. The local Council Tax Office will be notified of students who are exempt after enrolment. However, you can also request a letter to confirm your student status from reception.

Students are responsible for setting up and paying for their utility bills, including water, electricity, gas and internet access.

Council information

To find out about Manchester City Council services including recycling, bins, leisure and parking, head to manchester.gov.uk

LGBTQ+ Culture in Manchester

Manchester's electric LGBTQ+ scene is enriched with a friendly and vivacious community and some of the best bars in the entire city. Head to the main strip on Canal Street, home to popular LGBTQ+-friendly clubs such as G-A-Y, Bar Pop and The Brewers, a new nightclub serving various cocktails and spirits seven days a week.

Manchester's world-renowned Gay Village welcomes all walks of life and is not just exclusive to LGBTQ+ people. It's located south of Chinatown (near our Bank Chambers college) and holds events not to be missed, such as karaoke, drag shows, and various competitions with cash prizes. The clubs here play pop, house, bashment and all genres of music imaginable.

Also in the Gay Village is the Alan Turing memorial park, which holds an iconic statue made in memory of this LGBTQ+ hero. It's often a popular meeting spot where students and community members catch up and hang out. Manchester is a very LGBTQ+-friendly city and has many dates on the calendar to celebrate diversity. Every year, the city hosts Sparkle – a transgender celebration weekend in July – and welcomes allies and thousands from the LGBTQ+ community for the Pride Festival during the August Bank Holiday. Incredible artists such as Ariana Grande, Cheryl and Years & Years have performed at previous Manchester Pride Festivals.

This is also a city that adopts the Pride in Practice scheme in GP practices to make sure our LGBTQ+ community can access high levels of healthcare and build strong relationships with doctors. There's no doubt about it: Manchester is one of the world-leading gay-friendly cities.



Music resources

Manchester is full of innovative music businesses. Some have impressive musical histories, while others are fresh and up-and-coming. It's a city that's full of music venues both old and new, agencies, music labels, record stores and so much more. Take a look at the music industry businesses that you'll have on your doorstep.

Music labels

- Melodic
- Skam Records
- Swing Ting
- Banana Hill
- Sola
- Sferic
- Hypermagic

Music agencies

- Bloomsbury Music
- Key Music
- SJM
- DHP

Music venues

- YES
- Band on the Wall
- The Deaf Institute
- Albert Hall
- Gorilla





Join us in Manchester

To apply to BIMM Institute Manchester, book an audition or ask us a question, please don't hesitate to get in touch.

We can't wait for you to join us in this incredible city – and start your career (and life) in music.

BIMM Institute Manchester
Bank House
Faulkner Street
Manchester
M1 4EH

BIMM Manchester
Merchant Exchange
17 – 19 Whitworth St West
Manchester
M1 5WG

BIMM Institute Manchester
8 Great Marlborough St
Manchester
M1 5NN

Tel (UK): 0844 264 6666
Tel (Int): +44 1273 626 666
Email: admissions@bimm.ac.uk
Web: bimm.ac.uk



BIMMinstitute



BIMM_Institute



tvbimm



bimm_stagram



