



BIMM
INSTITUTE

Hamburg

Year 22/23

Pre-arrival guide

City guide

Accommodation guide

Health insurance & visa advice



Contents

Welcome	4
About Hamburg	6
My Hamburg	8
About BIMM Institute Hamburg	10
BIMM Institute Hamburg lecturers	14
BIMM Institute Hamburg courses	18
Accessing BIMM Institute Hamburg	20
Getting around Hamburg	22
Public transport	23
Other forms of transport	24
Airport transfers	26
Accommodation Guide	28
House hunting basics	29
Living costs	30
Types of rentals	32
House viewing tips	34
Renting procedures – what you need to know	38
Accommodation providers, lettings agencies & student residences	40
Glossary of terms	44
Planning your move to Germany	46
Required legal documents	47
Visa information	50
Health insurance	52
Language schools	54
Essential equipment guide	56
Student perks & discounts	58
Join us in Hamburg	60

Welcome

At BIMM Institute Hamburg, we understand that choosing the right place to study and nurture your talent is one of the most important decisions you'll ever make. And we are delighted to welcome you to study at BIMM Institute Hamburg.

I have been with BIMM Institute since we opened our doors in Bristol in 2008 and I am proud to have been involved in the setting up of both the Berlin and Hamburg colleges. My background in music and education is patchwork, having worked as in-house technical crew doing everything from building stages and rigging lights, to stage management and performing in bands in the UK and Berlin.

At BIMM Institute, I have held roles in Student Services, in various Course Leader positions, been Head of Education, and am now College Principal for BIMM Institute in Germany. I hope that this gives me a broad perspective of what it requires to be a diverse practitioner in my field. However, more importantly, it means that I have seen the student experience from many angles, and I seek to bring a holistic and student-centred approach to the colleges.

I believe that BIMM Institute's greatest asset is the people it attracts and nurtures. In both cities, our teams are current practitioners in the music industry who are focused on ensuring that your learning experience is of the highest quality. But also, it is the students who, each year, bring new skills, interests, and experiences to enrich our wonderful creative communities at both sites.

BIMM Institute Hamburg students will attend lessons taught in English at a range of state-of-the-art professional facilities. As a student your decision to study at BIMM Institute in Germany is already bold. It's a great starting point for a creative education and career.

Having been an international student myself, I recognise the challenges that different learning environments present, and value the benefits of learning outside of the curriculum that comes with this. Our diverse student cohorts at BIMM Institute are one of our greatest resources. As a member of our colleges, you will establish yourself in our network that will provide inspiration, mentorship, and connectivity to the industry.

It is a privilege to be part of the community that is BIMM Institute and to support the development of the next generation of music industry professionals. The whole team here at BIMM Institute look forward to getting to know you as individuals, as you, our students, adapt to the changing industry. You'll also change the industry by inventing new ways of creating and experiencing music – and carving new pathways to explore a life in music.

Anna Marks

College Principal
BIMM Institute Berlin and BIMM
Institute Hamburg



About Hamburg

Historically, Hamburg has always been a city built around trade and commerce – but this certainly doesn't mean it is lacking imagination or personality.

Its financial stability allows artists and musicians to be truly creative knowing there's solid backing behind them. The city's economic prowess has seen global music brands like Warner Music Central Europe base their operations here. It's confident and fun, but never far from rebellious undertones expressed in Sternschanze's colourful graffiti, or on stage at one of St. Pauli's many alternative clubs.

John Lennon once said: "I might have been born in Liverpool, but I grew up in Hamburg." When The Beatles made Hamburg their home from 1960 to 1962, they played legendary venues Indra and Molotow – honing their performance, songwriting skills and image – before being brought to the attention of Brian Epstein and, ultimately, the world.

Today, Hamburg is an electrifying place for emerging musicians. Every September, the Reeperbahn Festival hosts over 800 live music events across 70 venues, featuring BIMM Institute students. This just goes to show that, while the Fab Four might have been the first to launch their music careers in Hamburg, they were simply the start of many more to come!

BIMM Institute Hamburg is situated close to the Reeperbahn and Schanzenviertel, at the heart of St. Pauli – and holds a key position in Hamburg's music scene.



My Hamburg (Anna Hirschgänger)

BIMM Institute Hamburg graduate



What to do first

There's a lot of great stuff to do in Hamburg, but one of the first things I recommend doing is taking the underground (U-Bahn) to the Landungsbrücken right at the Elbe River. From there, you can see our famous concert hall, the Elbphilharmonie, sit down at the promenade with a beautiful view of the harbour or go on a little trip on a ferry boat. They are part of the public transportation network and free to use with your daily train ticket. From the Landungsbrücken it's not too far to Hamburg's club- and red-light district, the Reeperbahn. The Beatles spent the early years of their career here and you should consider walking down the bustling street to see where they first started.

See the different sides of Hamburg

Hamburg presents itself in many different ways. The old warehouse district (Speicherstadt) with its beautiful architecture from the 19th and 20th centuries forms an interesting contrast to the city's newest district HafenCity. St. Pauli and the Schanzenviertel are Hamburg's more alternative and creative districts where most of the local music industry is concentrated. The historic Gängeviertel, located in the city centre and surrounded by modern office buildings offers a creative place for music, arts, community, discussion and diversity.

Live music

The city offers lots of clubs, bars and live venues for an amazing night out. The Reeperbahn is definitely the best place to go to experience Hamburg's vibrant nightlife. Grünspan, Molotow, Uebel & Gefährlich, Mojo and Knust are all awesome venues located around St. Pauli and the Sternschanze. Monkeys Music Club, Freundlich + Kompetent and Birdland are great places to go to for open mic nights, and if you are up to a fun night of karaoke, I recommend Thai Oase.

Culture

The Hamburger Kunsthalle, the Deichtorhallen and the Museum für Kunst und Gewerbe are only a few of the great art museums to go to. If you like watching movies, you should definitely visit the Savoy Cinema. It's absolutely gorgeous and shows many movies in their original language. The Thalia Theater is my favourite theatre in the city. Most of its productions are more contemporary and not too pricey.

St. Pauli is famous for being where The Beatles first started gigging. And if you're a mega Beatles fan, you can join walking tours that call in at all the clubs and bars that John, Paul, George and Ringo called their locals. Look out for: The doorway in the Reeperbahn district where John Lennon nonchalantly leans on the cover of his solo album, Rock n' Roll.

Shopping

Zardo Records and Michelle Records are my go-to record stores in Hamburg. Altona and Schanzenviertel are the best neighbourhoods to shop for second-hand and more alternative clothing and every Saturday, there is the Flohschanze flea market that is definitely worth checking out.

Our main shopping mile, the Mönckebergstraße, is located in the city centre near our beautiful town hall and the Alster river. If you are exhausted from a long shopping day you should relax with a drink at Strand Pauli right at the Elbe River.

Must-sees in the city

One thing that makes Hamburg really special is the amount of nature in the city and its proximity to the water. You should not miss out on all the beautiful parks here. My personal favourite is Planten un Blomen, but the Stadtpark is wonderful as well. On sunny days I recommend renting a canoe and going on a little trip down the Alster river.

About BIMM Institute Hamburg

We're proud to welcome you to our brand-new teaching space near the Karostar Musikhaus in St. Pauli, Hamburg. Our new college is a real paradise for music aficionados, and right in the epicentre of Hamburg's music industry.

We are lucky to have over 40 music companies as our neighbours including Beggars Group, Netzwerk Music Group, Inferno Events (co-production with Reeperbahn Festival), White Horse Music, Hamburg Music (The network of Hamburg's music business), Devil Duck Records and many more.

Knust, one of Hamburg's most iconic clubs, has hosted gigs from world-renowned artists such as Arcade Fire, Robyn, Bon Iver. You can enjoy the 'Knust Acoustics' (open-air concerts) that take place outside in the sunny square during the summer months, just next door to our college.

Additionally, you'll find loads of good spots for food and drinks just around the corner: Dschungel for cheap beers, Feldstern just opposite the college for food and drinks, HappenPappen for great vegan offerings, and Rindermarkthalle, which has supermarkets and a food court for everyone. Cafés such as Manufact or Elbgold are also great for small-batch, locally roasted coffee.

Students at BIMM Institute Hamburg have direct access to state-of-the-art professional facilities, with equipment and software delivered by the world's leading music instrument manufacturers who actively support and endorse us, including:

- Two Ableton Certified Mac suites with the latest Apple hardware and all the industry-standard software installed, such as Pro Tools, Logic Pro, Ableton Live Suite, Native Instruments Komplete and a wide range of fantastic third-party plugins and software instruments.
- Live rooms equipped with high-spec full backline, akin to a professional venue, with excellent acoustic treatment and soundproofing.
- Lecture rooms where lessons and industry Masterclasses will take place.
- Production room to put down a killer vocal, demo your latest track, experiment with new sounds and instruments, or work out that tricky arrangement with your bandmates.
- Tutorial rooms to provide space for you to meet your lecturers, receive careers advice, or have pastoral guidance from our friendly Student Support Team. You'll be given an allocated number of hours per term for one-on-one, bespoke tutorials with our expert industry lecturers.
- The reception area has a beautiful, spacious atrium. This large open area is where you will be able to study, network and socialise before and after your classes.



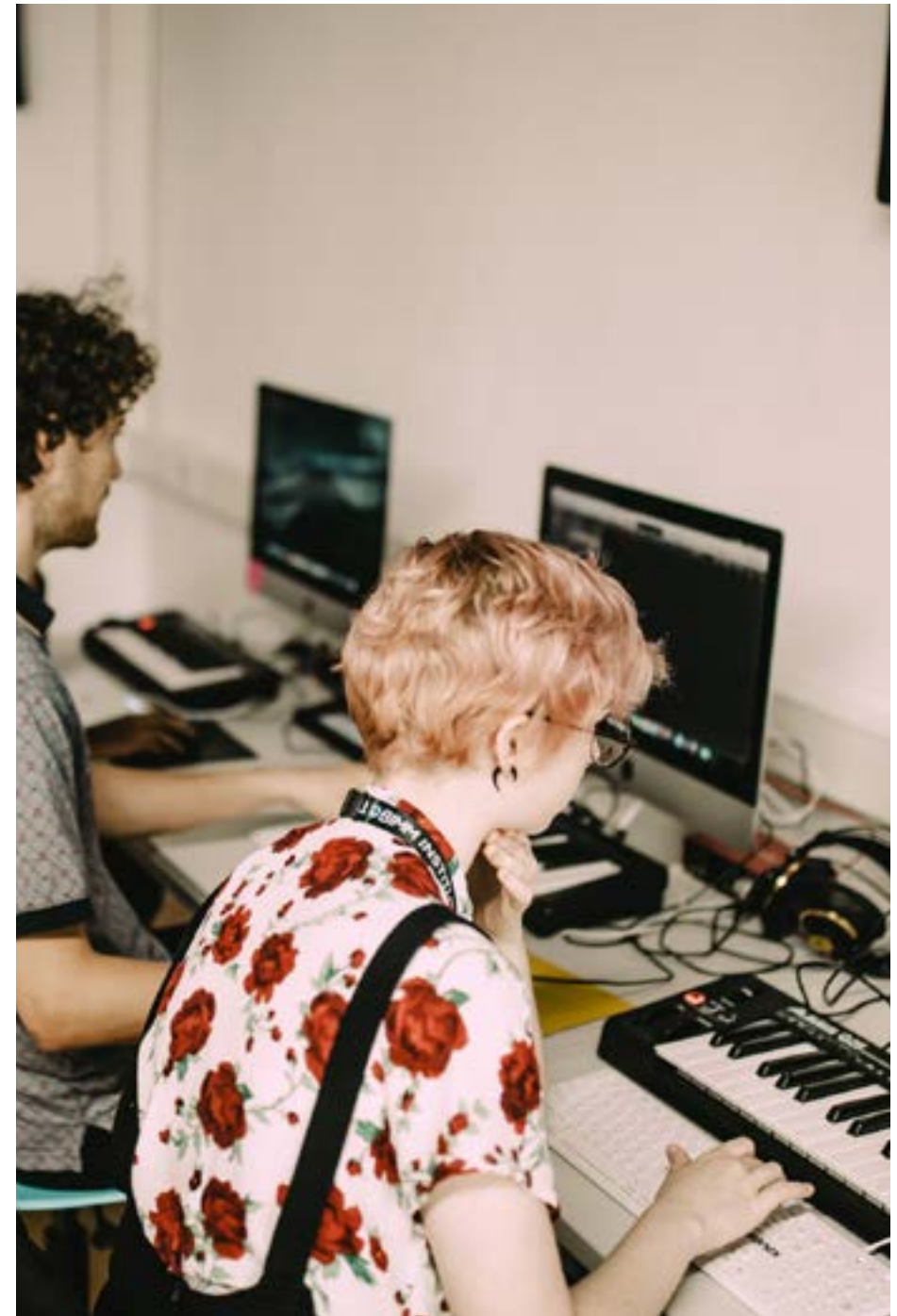
As a student, you will have access to all facilities when they are not in use for teaching. Slots in the rehearsal and production rooms are bookable through reception and Mac labs are available without booking when not in use for teaching. All students have equal access to the on-campus facilities and can borrow equipment from the Estates & Facilities team, with a broad range of guitars, basses, synths, microphones and recording equipment that is available to book at no extra cost on top of your tuition. You can use this time for independent self-study, working on your own projects or rehearsing. All student areas have barrier-free access.

Exclusive external facilities and partnerships

Music Production students will be taught at professional recording studio Chefröck Studios, featuring a main control room equipped with an analogue Neumann console and a vast range of analogue outboard equipment. Chefröck Studios also boasts a large recording room, a vocal booth, and a client lounge. Our close ties with the music industry mean that as a Performance or Songwriting student, you will have your group performance classes in the live music venue, Jolly Jumper. This lets you practice performing in a real-life setting, right in the heart of Sternschanze.

We have very close partnerships with leading European companies and reputable Hamburg organisations, such as FKP Scorpio, Warner Music Central Europe, Audiolith Records, PIAS Records, iZotope and Ableton.

Because of these connections, you'll have access to industry internships, work placements and networking opportunities that you won't find anywhere else.



BIMM Institute Hamburg lecturers



Luke O'Malley
Performance and Songwriting

Luke O'Malley is a guitarist, composer, singer and producer known for his contributions to New York City-based jazz, funk, improv and rock. He was a founding member of Antibalas, writing and recording on all the group's albums and spent years touring with them worldwide.

He has done studio work with musicians including Usher, Mary J. Blige (Growing Pains—Billboard #1 album), Mark Ronson, Rag N' Bone Man, Daniel Merriweather, Aloe Blacc, Spank Rock, Nneka, TV On the Radio, GRiZ, Sinkane, Kronos Quartet, Baloji, and Dead Prez.

As a performer, Luke often sits in with The Roots on Fallon and has shared the stage with Pharrell Williams, Justin Timberlake, Alicia Keys, Jamie Foxx, John Mayer, Erykah Badu, Jill Scott, Nile Rodgers, David Byrne, Stevie Wonder, Rick Ross, Usher, Public Enemy, Cee Lo Green, Lil' John, T.I., Sarah Bareilles, Action Bronson, Idina Menzel and Sharon Jones and the Dap Kings.

From 2016-2018, he composed a large portion of the score to the VGX "Best Original Video Game Score" winner Red Dead Redemption 2. In 2013, he co-composed the score to the Oscar-nominated HIV/AIDS documentary, How To Survive A Plague. In addition, Rockstar Games has hired Luke to bring his distinct guitar style to the soundtracks for Red Dead Redemption and Grand Theft Auto 5.



Ema Stapleton
Music Business, Songwriting
& Performance

Ema is a vocalist and musicologist who is involved in many areas of the creative industries. She has many strings to her artistic bow, her experience ranging from session work to freelance journalism, arts administration, and event management. She was awarded a Masters in Popular Musicology from Goldsmiths College, London in 2018.

Ema is also passionate about promoting equality and inclusivity through the arts. She has worked with Mother Tongues, an organisation advocating for diversity in Ireland, managing their annual arts festival since 2018.



Yak Bondy
Music Production

A top songwriter and producer, Yak has worked with numerous multi-platinum record-selling artists, including S Club 7, Annie Lennox, Lisa Stansfield, Mark Morrison, Erykah Badu, Holly Valance, and Melanie C.

His writing and production skills have created hit singles such as Emma Bunton's 'Maybe' and Amy Studt's 'Just A Little Girl'. Yak is also a versatile musician whose work has been recorded across the globe by diverse artists such as A.R. Rahman and Nusrat Fateh Ali Khan, Embrace, Placebo, Rachel Stevens and Liberty X.



Peta Devlin

Songwriting, Performance and Music Production

Peta grew up in a musical family singing four-part harmonies and it's no surprise that her upbringing led to a multi-faceted career as a musician, producer and sound engineer.

As a musician, Peta's played on every kind of stage there is – from a street corner in Hamburg to a stadium in St. Petersburg. After arriving in Hamburg in the late 1980s, she spent the next decade performing and recording with the renowned pop band Die Braut haut ins Auge. Since the band disbanded in 2000, Peta has played everything from punk to country and collaborated with a variety of bands including Bela B, one of Germany's most (in)famous stars.

As a studio and live sound engineer and producer, Peta has worked with some of the best bands to come out of Hamburg such as Die Sterne, Blumfeld, Tocotronic and Die Goldenen Zitronen. Peta also owns a small studio where she produces radio plays, and writes and records music for radio, theatre and film.



Jörg Tresp

Music Business

Jörg Tresp has been running his label DevilDuck Records for 14 years and is passionate about artist development. He is currently opening offices in Canada, Australia and the USA to expand his artists' global reach.

He previously worked for Warner Music Germany for 7 years as their Head of Rock/Alternative. He also worked in label management for Sub Pop and other indie labels from USA and Canada and has extensive experience in artist management.

An experienced teacher, Jörg has been teaching Music Business for over 12 years.



Deniz Erarslan

Performance

Deniz studied Jazz/Pop Guitar at The Cologne Conservatory of Music and is a busy and in-demand guitarist from Hamburg.

For more than ten years, he's been the guitarist and co-songwriter of Hamburg-based indie rock band Fotos. Together, they have released four critically acclaimed underground records.

Deniz has toured across the world and played major festival stages in the United States and Japan. He currently plays live and in the studio for the established German acts BOY, Clueso and GLORIA. He can also be seen on national TV every Monday night as part of the house band of Late Night Berlin.

BIMM Institute Hamburg courses

Undergraduate courses:

- BMus (Hons) Popular Music Performance (Vocals, Guitar, Bass, Drums)
- BMus (Hons) Songwriting
- BMus (Hons) Popular Music Performance & Songwriting (Joint Honours)
- BA (Hons) Music Production
- BA (Hons) Music Business

All courses are validated by BIMM Institute. Each course starts in late September and is taught over two semesters per academic year, each 15 weeks long. The undergraduate courses last for three years in total.

For full course information, fees and entry requirements visit: bimm-institute.de.

Please note that all courses are subject to change and availability.



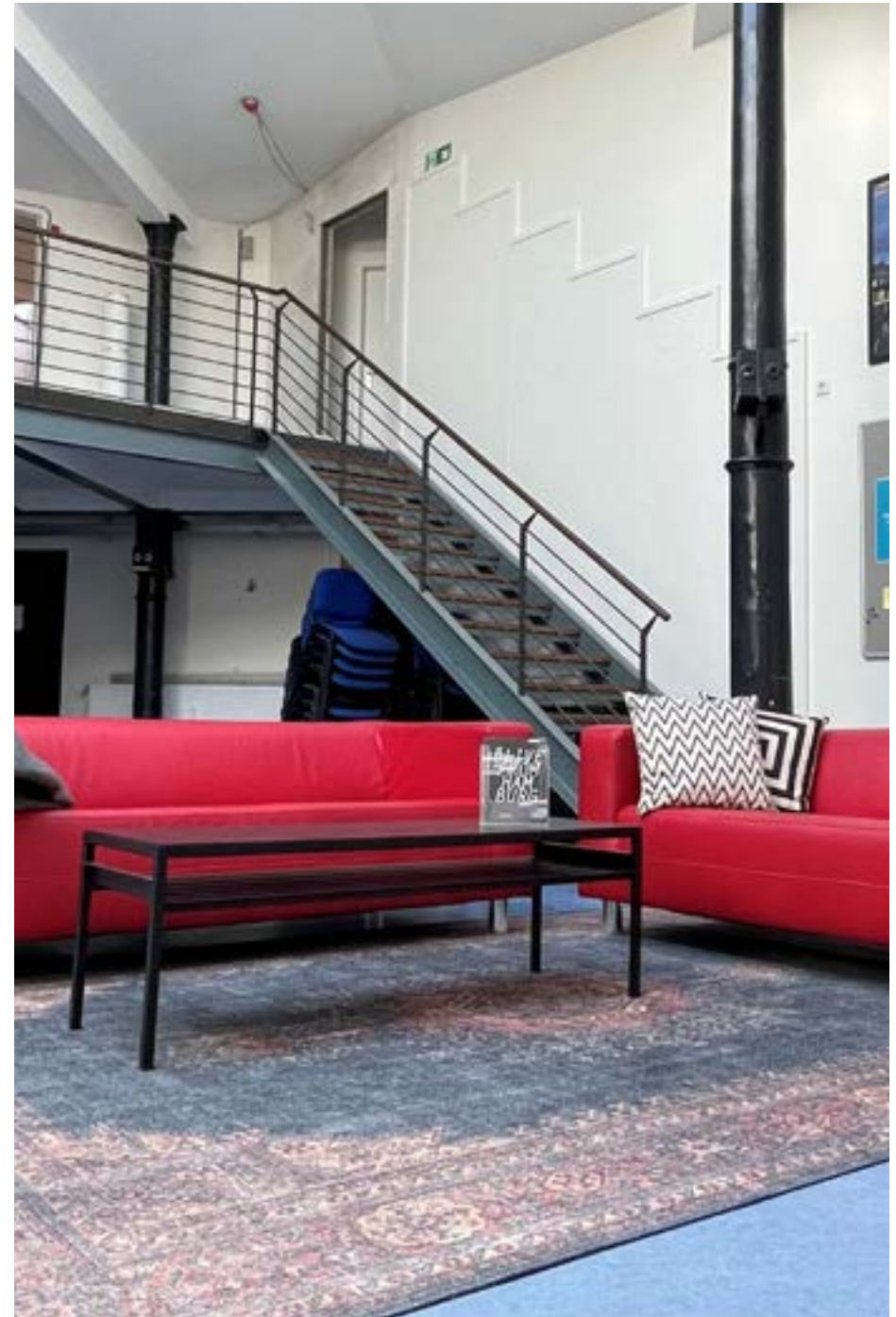
How to access our college

Located in Hamburg's vibrant St Pauli district, BIMM Institute Hamburg is in the heart of the action.

The college address is:
BIMM Institute Hamburg
Neuer Kamp 30b
20357 Hamburg

Parking is very limited within the area. Remember to take into consideration the cost of travelling and the time it will take to get into BIMM Institute Hamburg when making any accommodation decisions. Further accommodation advice can be found on page 28.

The college's nearest U-Bahn station is Feldstraße on the U3, and the station exit is a 1-minute walk from the college's entrance. The bus routes 3, X3 and 17 also stop right in front of the college.



Getting around Hamburg



Public transport

If you are going to be using public transport regularly, we recommend purchasing a monthly or annual pass – it is a lot cheaper in the long run. You can access our college using the below public transport connections:

- Feldstraße U-Bahn (U3 line) station is a one-minute walk away.
- Messehallen U-Bahn (U2 line) is a 10-minute walk away and provides a quick connection to Hamburg Central Station (Hauptbahnhof) with services running regularly.
- The 3 and X3 buses also serve the area and run approximately every ten minutes.

As public transport in Hamburg is reliable and well organised, we strongly recommend you take advantage of it!

You can use the [moovit](#) or [HVV](#) apps to find out the ‘what’ and ‘where’ and ‘how’ to get around by public transport.

And with this [network plan](#) you will have an overview of all lines and routes of the rapid transit at a glance.

When studying at BIMM Institute Hamburg, you are eligible for a discounted public transport ticket. For this purpose, you will receive proof of your enrolment in your induction folder that is handed out to you at the start of your studies.

You can find general information on the student discount and how to purchase your ticket [here](#).

You may wish to consider living slightly further away and commuting into St.Pauli, especially if you’re already settled in Hamburg. Remember that you’ll need to take into consideration the cost of travelling, and the time it will take to get to BIMM Institute Hamburg when making any accommodation decisions.

Other forms of transport

We strongly encourage you to take advantage of the city's many cycle paths!

As a fairly flat city with a large number of dedicated bike routes, it's something of a cyclist's dream. There's also a wealth of bike storage space in the area, and there are several bike workshops nearby should you need to get yours repaired.

Should you not own a bike but want one, you might want to check out [Swapfiets](#). They rent out bikes on a long-term basis, and any repairs are already included in the membership fee.

There are also several reasonably priced vehicle-sharing companies. Some of our favourites include:

E-Scooters:

- [Emmy](#)

Bicycles:

- [StadtRAD](#)
- [Bike Hire Altona](#)
- [Hamburg City Cycles](#)

Car-share and rental options:

- [Car Rental Price Comparison](#)
- [Cambio Car Sharing](#)
- [Sixt Car Sharing](#)
- [ShareNow](#)
- [Miles Car Sharing](#)
- [Hamburg private car-pooling](#)

Please be aware that you will need to check all legal requirements for these services – make sure you have the appropriate licenses if necessary, and do make sure to adhere to the rules of the road and safety standards (i.e. wear a helmet).



Airport Transfers

Hamburg Airport (HAM) is well connected by public and road transport.

The S-Bahn (train) line S1 takes you from Hamburg Central Station (Hamburg Hauptbahnhof) to the airport and back every 10 minutes, with a journey time of only 25 minutes each way. You can reach the S-Bahn station “Hamburg Airport (Flughafen)” directly from Terminals 1 and 2 (Arrivals) via elevators, escalators, and fixed stairs.

From Hamburg Central Station, you can access BIMM Institute Hamburg by taking the U3 for 6 stops (direction Barmbek) to Feldstraße. BIMM Institute Hamburg is then just on the opposite side from the subway station.

Purchasing a public transport ticket

You can purchase a ticket to take the train at one of the ticket machines on the platform at the airport or at your point of departure. To travel to or from the airport to the City Centre, you will require an AB ticket.

Tickets can be paid for by cash or card. Further information can be found on [HVV's website](#).

Car & Taxi

For a relaxed and safe journey home, taxis are available at the taxi stands in front of Terminal 1 and Terminal 2. Payments in the taxis can be made in cash as well as with card / contactless.

Taxi companies at Hamburg Airport include the below and can be reserved using the contact numbers:

- Hansa-Taxi: +49 (0)40 211 1799
- Taxiruf-Hamburg: +49 (0)40 441 011
- Taxi Hamburg: +49 (0)40 666 666
- Taxi Stambula: +49 (0)40 2000 1111

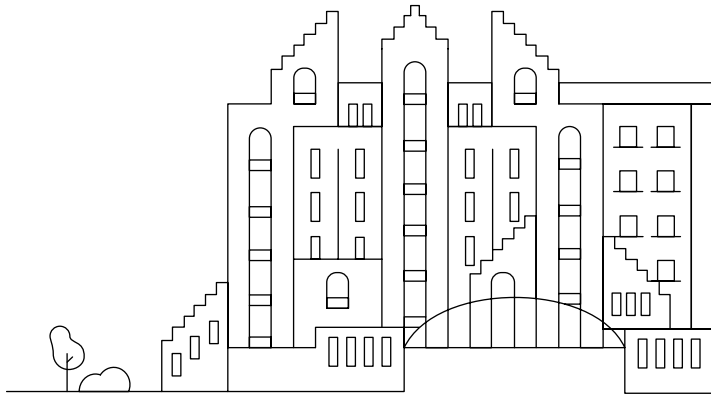
Taxi drivers are obliged to take the shortest and therefore cheapest route, and a one-way fare to the centre of Hamburg will cost approximately €25-30.

If you are more comfortable using a taxi app service in your own language, then we recommend using [FreeNow](#) or [Uber](#). Many Hamburg taxi drivers are registered to these systems but note prices can vary between platforms so do check ahead of your journey for the best quote.

Further information on transport to and from Hamburg Airport can be accessed on its [website](#).



Accommodation Guide



Accommodation advice within this guide is offered by BIMM Institute Hamburg's Student Support team.

In this section, we take you through all the things you need to think of when planning your move to study in Hamburg. Here, you will find guidance on how to find a place to stay, renting in general, how to register in Hamburg after you have found a place to stay and how to apply for student health insurance, which is obligatory in Germany.

Last but not least, you will find information on how to travel from your new place to our campus and how to get around this lovely, cool and buzzing city that will be your home now for the time to come.

If you like, check out the city's [Welcome Portal](#). It might be of interest to you as it contains a lot of helpful information for people new to Hamburg and Germany in general.

Welcome to Hamburg, and welcome to student life!

House hunting basics

Finding accommodation in Hamburg is competitive, so make sure that you have all your documents ready and are prepared to spend a good amount of time looking for a flat share or apartment to avoid disappointment. There are also some important aspects to understand before you embark upon the excitement of hunting down your digs. This includes the following:

- **Selbstauskunft** – a voluntary disclosure form that includes personal and financial information. (You can easily find templates online).

- **Schufa-Auskunft** - this is not necessarily required for students arriving from abroad, but it's always a good idea to make sure you have some evidence of your credit rating. Otherwise, anything declaring that you aren't in any debt will suffice.

- **Mietschuldenfreiheitsbescheinigung** - This is proof (a reference) from your previous landlord that you have no debts relevant to your rent. If this is your first time moving away from your parents' house, you can ignore this point.

- **Einkommensnachweise** - proof of income/ proof of parents' income if they're renting on your behalf. In this case, you should also add a written guarantee of payment signed by your parents.

- **Copy of your ID card/ Passport and visa** If applicable.

How much can I expect to spend?

The amount you'll pay very much depends upon the type of accommodation you choose – for example, the privacy of a one-bedroom apartment will cost considerably more than a three-bedroom flat share.

As with all cities, where you live will affect the price: opting for lodgings right next to a U-Bahn line in the centre of a key nightlife district will take more from your wallet each month than somewhere a little further out.

We recommend the following areas, some of which are within walking distance of BIMM Institute Hamburg or a short commute:

- St. Pauli
- Karolinenviertel
- Schanzenviertel
- Eimsbüttel
- Hoheluft
- Altona
- Wilhelmsburg
- Barmbek



Different kinds of rentals

Please familiarise yourself with the three different kinds of rental: Mieten means to rent or to let and refers to a direct contract between you and a landlord, while Untermieten means to sublet; renting a room from someone who themselves has a contract with the landlord. A WG, or Wohngemeinschaft, is a flat share, in which a group of people will come together to rent a property. No matter which type you choose, your rights as a tenant are protected under German law that prevent eviction, exploitation etc.

Mieten (renting)

The first option is the most straightforward as you have a direct contract with the landlord. However, taking on a tenancy will likely bestow several responsibilities upon you as a tenant – there are a fair number of checks to be passed as well (see the What I need to know section page 38 for more information).

Untermieten (subletting)

Much more flexible are Untermieten agreements, which are often more informal in nature and shorter in length, and sometimes negotiable in terms of cost.

Although tenancy agreements cannot be drafted up arbitrarily and must adhere to the existing regulations in tenancy law, you should pay special attention to the contract you are signing to make sure nothing is added at your disadvantage. After all, who wants to find themselves in a court case if something goes wrong?! One particular aspect to consider is the fact that sometimes in cases

of sublets the landlord was not informed about you living there. This is prohibited under law, and the landlord can end the lease without prior notice, creating a whole series of problems for you. So, it's better to make sure you have this clarified beforehand and there is official confirmation for a sublease from the owners of the place (plus, you will not be able to register yourself in Hamburg if you do not have written consent).

WG's / Wohngemeinschaften (Flat shares)

Perhaps the best option for students is the Wohngemeinschaft, where you would share a property with others, take on equal responsibility and split costs between you. These are very common within Hamburg, and while some care is needed to ensure that you do not end up living with people that you don't get along with, they can be a fun and affordable option. The European accommodation portal wg-gesucht.de is a great free place to look for these.

Alternatively, you could sign up with one of the Mitwohnzentralen– accommodation agencies that specialise in filling rooms across the city, or join and message the [BIMM Hamburg Student Facebook Group](#) to find others heading to the city who are looking for people to share with. You can also search for other public groups on Facebook to ask about flat shares.



House viewing tips

Tips for viewing properties

- Take someone with you or let someone else know exactly where you're going when you go to visit a property, just to err on the side of caution.
- It's also a good idea to visit the area at night at a separate time to your viewing to get a sense of the area during both the day and night-time. If you do this, please ensure you stick to the point above and take someone with you.
- Make sure you and all your other housemates view the place. Don't take someone else's word that the property is right for you.
- Compare a range of different landlords and properties.
- Don't let landlords / estate agents pressure you - if you don't have a good feeling about it, look for other options.
- When you go to view, take notes and photos (with permission), and use our checklist to make sure you don't miss anything.
- Lastly, never ever transfer any money if you have not seen the apartment and signed a contract yet. Scammers will often say they are currently abroad and that you will need to transfer the deposit to reserve the place.

What to look for at viewings

- Does the place look well maintained?
- Will it be warm enough? Are the windows insulated?
- Will it be safe and secure?
- Does it have the space and facilities you need?
- If the current tenants are showing you the apartment, are they happy with the landlord?
- Is the property affordable and good value?
- Is the area suitable?

Extra fees to consider

- Drawing up contracts
- Administration charges
- Reference fees
- Inventory fees

Will I need to sign a contract to rent a room?

Most landlords / estate agents will ask you to sign a tenancy agreement. However, living without a tenancy agreement can certainly have its advantages and is by no means in a legal vacuum, as it sometimes seems. For the validity of a contract, it is basically irrelevant whether it was concluded in writing or verbally. This also applies to the tenancy agreement, which does not necessarily have to be in writing. However, in such a case it can be difficult for legal laypersons to keep track of the rights and obligations arising from the verbally agreed tenancy.

Before you sign a contract, make sure you understand all the clauses, so there are no nasty surprises after you've signed.

I've heard I have to register my address – is that correct?

Everyone who wants to stay in Germany for longer than three months – including EU citizens – needs to register their residence (Anmeldung) at a registration office (Einwohnermeldeamt) within two weeks of moving in or face a fine.

Einwohnermeldeämter can be found within a Bezirksamt, or Citizen's Advice Office, of which there are many within Hamburg, and registration requires a signature from your landlord or lettings agency.

Useful documents (i.e. confirmation letter / Einzugsbestätigung) and a link to the booking system can be found [here](#).

Do I need to hold a German bank account?

While it is possible to transfer money from an international account to a German landlord, you may find your dealings are much easier if you hold a bank account within Germany, particularly if you're dealing with agents.

This is also ordinarily a requirement for passing a credit check, or [SCHUFA Auskunft](#) which you'll need to do if you intend to rent privately.

Do I need to pay a deposit?

Some landlords request one to two months' rent as a deposit; others the equivalent of three months – it shouldn't be more than this. The money shouldn't be paid directly to the landlord but instead put into a joint savings book where, if no repairs or damages take place during your tenancy, it should be returned to you along with the interest it has gained when you return your keys.

Do I need a guarantor?

There are many documents that you need when renting in Hamburg. You'll typically be asked for: an application form; copies of photo ID; proof of income (wage slips from the last three months); a letter from your previous landlord indicating that there is no rent outstanding; and your credit report (see previous point). If you don't have one of these or have just arrived in Germany and have no reliable income, then it's best to have a friend or a relative as a guarantor. This will increase your chances of being given a contract.

Please be aware some letting agents aren't too keen on letting directly to students – in many cases they will ask the parent(s) to rent the apartment, and this should be noted. If in doubt, take a look at our House Hunting page to see exactly which documents you'll need.

What are the different types of leases?

A standard lease is between one tenant and the landlord and lasts for an indefinite period of time. A temporary lease has an end date that will be stated from the start, and once this end date has been reached, the tenant must move out.

How does shared accommodation work?

Within shared accommodation, three options are available:

- One person assumes the role of the tenant, signing the lease with the landlord and taking on all responsibilities. They then sign a subtenancy agreement with the additional tenants.
- All or some of the tenants become head tenants, assuming the same obligations to the landlord.
- All tenants sign separate leases with the landlord to cover their own rooms.

What are the rules for ending a tenancy?

The usual notice period for both tenant and landlord in Hamburg is three months. However, under German law, a tenancy can be terminated without notice if:

- The property is used consistently for non-agreed purposes
- The rent is unpaid for at least two months
- The tenant is consistently noisy or disturbs neighbours

What are the landlord's responsibilities?

In general, the landlord is responsible for:

- Heating and hot water installation
- Baths, sinks, basins and other sanitary installations
- The structure of the exterior of the property
- Repairs to and safety of gas and electrical appliances
- Ensuring that any furniture supplied meets fire resistant requirements
- Regular smoke detector checks

At the start of a tenancy, your landlord should provide you with an Übergabeprotokoll – a document that clarifies the condition of the property at that point to protect you against unfair accusations when it ends.

Will I need to take out insurance?

Most agents and landlords will require you to take out third-party liability insurance (Haftpflicht) and/or contents insurance for the property (Hausratversicherung). You may find the website [Check24](https://www.check24.de) useful to compare insurance and utility prices from various providers.

Further questions

If you have any further questions about finding accommodation in Hamburg, please don't hesitate to contact our Student Support team: +49 (0) 40 874 09 632 or by email at studentsupporthamburg@bimm-institute.de.



What I need to know

Number of rooms

Apartments in Hamburg are categorised by the number of rooms, excluding the bathroom and the kitchen.

So, '1 Zimmer' would be a studio flat, plus a bathroom and kitchen, while '2 Zimmer' would refer to one bedroom, a sitting room/ lounge, a bathroom and a kitchen.

It's also quite common to find apartments for rent without any built-in kitchen appliances: unless the property is advertised as having an Einbauküche (built-in kitchen) it may have only a sink and possibly a stove, so if you're keen on home-cooking you'll want to check this carefully.

Charges

Note as well that two different rental prices will often be quoted on advertisements: Kaltmiete and Warmmiete

Kaltmiete

Or also known as cold rent, refers to the cost of renting the property alone, with no extras such as utilities.

Warmmiete

Or also known as warm rent, normally includes any charges for communal spaces, heating and water (although not usually electricity or internet).



Accommodation providers and private advertisement portals

The list of accommodation providers below may be useful for you to look into when deciding where to live when you first move to Hamburg. Please note that the following agents have not been visited or vetted by BIMM Institute Hamburg, so please research these options thoroughly.

General lettings

Agent	Website	Telephone Number
Home Company	hamburg.homecompany.de/	+49 (0) 40 19445
Home For Rent	homeforrent.de/	+49 (0) 30 - 88 30 51
Immonet	immonet.de/	
Null-Provision	null-provision.de/	
Wohnungsmarkt 24	wohnungsmarkt24.de/	
Immobilien Scout 24	immobilienscout24.de/	

Private lettings

Agent	Website	Telephone Number
WG-Gesucht	wg-gesucht.de/en	
Wohngemeinschaft	wohngemeinschaft.de/	

Student Residencies

Agent	Website	Telephone Number
SMARTments	smartments-student.de	
STUART Apartments	stuart-apartments.com/	+49 (0) 40 756680 - 18
Yugo Student Residence	yugo.com/	+49 (0) 40 33486879
Erasmusu	erasmusu.com/	
Kolping Jugendwohnen	kolping-jugendwohnen.de/	+49 (0) 40 88 36 00 20
HousingAnywhere	housinganywhere.com/	
Uniplaces*	bimm.uniplaces.com/	

* You can also email bookings@uniplaces.com. There is 25% discount on the service fee if you use the code UP25BIMM online.

Please note: Due to recent changes in Hamburg local legislation regarding subletting private holiday and temporary apartments (private Ferienwohnungen, Airbnb etc) please be aware that this might affect some offers, so it is best to enquire beforehand if the apartment has been registered.



erasmusu

Rent your accommodation in advance and find out more about your new destination.

www.erasmusu.com

BIMM30

Choose only verified options and insert the promo code to get a 30% discount on the booking fee.

bimminstitute@erasmusu.com

Housing Anywhere

Are you looking for a room?

To help you find and book your new home abroad from trusted advertisers, BIMM Institute recommends HousingAnywhere, the international booking platform for student accommodation.

Sign up [here](#) to receive:

- A 20% discount on your booking fee;
 - A partner student badge that grants you priority access to all rooms;
 - Real time notifications on any new room available; Priority support at: vip@housinganywhere.com
- Going abroad? You can also rent [your room](#) to an incoming student.

Erasmusu

Erasmusu is a community platform, with accommodation, courses and language programmes listed in major cities worldwide.

BIMM Institute students enjoy a 30% booking fee discount with Erasmusu, using the code 'BIMM30', and the team can help with any queries you have regarding your search: bimminstitute@erasmusu.com

Navale.
It's where the change-makers of tomorrow live.

With all bills included, fully furnished rooms and high speed wifi (and many more great features too), what's not to love. To learn more, visit yugo.com

Tell us you're a BIMM student when booking to get a free Kitchen pack worth 85€!

yugo

Yugo

Yugo is a student housing provider with over 100 student spaces in the US, Ireland, the UK, Spain, Germany and Australia.

BIMM Institute students get a free kitchen pack worth 85€ when booking a 12-months stay with Yugo. You can contact the team at: navale@yugo.com

spotahome

Rent verified accommodation for months, 100% online.

25% off booking fee with the code **BIMM25**



Spotahome

[Spotahome](#) is an 100% online booking platform, offering an exhaustive list of apartments, rooms, studios, and student residences. BIMM students get 25% off the booking fee with the code 'BIMM25'.

Glossary of terms

Here's a list of some common words and phrases you might come across during your house hunt:

1-Zimmer-Wohnung (1= ein): this indicates a one-room or studio apartment

2-Zimmer-Wohnung (2= zwei): this means that there are two rooms within the apartment, excluding the kitchen and bathroom

3-Zimmer Wohnung (3= drei): same as above, except there are three rather than two rooms excluding the kitchen and bathroom

Warmmiete: the cost of some or all bills is included in the rent, but be sure to double check this in your contract

Kaltmiete: bills are not included in your monthly rent

Einwohnermeldeamt/Bürgeramt: registration office: this is where you'll have to go to register your new address. If you're not too confident with your German skills, we'd strongly recommend you bring someone who is with you. To find the registration office that is responsible for your registration, just fill in your post code on this [website](#).

Meldebescheinigung: registration certificate: upon moving to Hamburg, you'll have to register your new address within a few weeks or pay a fine.

WG/Wohngemeinschaft: shared apartment

Untermiete: sublet / subtenancy

Zwischenmiete: interim let

Hauptmieter / Mieten: main renter (the person who holds the contract for the apartment) / to rent

Nebenkosten: utilities

Möbliert: furnished

Unmöbliert: unfurnished

Kaution: deposit: generally speaking, landlords can request a deposit up to the value of three months' rent, which will be returned to you when you move out providing everything is in order

Courtage: commission

Einbauküche/EBK: fitted kitchen

Mietvertrag: rental contract

Anmeldung: a compulsory registration document, stating where you live in Hamburg and the date you moved in. This must be obtained within a fortnight of your arrival in Hamburg or you can face hefty fines, so we recommend you get your accommodation sorted before you arrive. You can register for an Anmeldung appointment at your local Einwohnermeldeamt/Bürgeramt (registration office).

More information

For more helpful information on relocating to Germany, check out the below links provided by HousingAnywhere:

[Registration in Hamburg](#)

[Moving to Germany checklist](#)

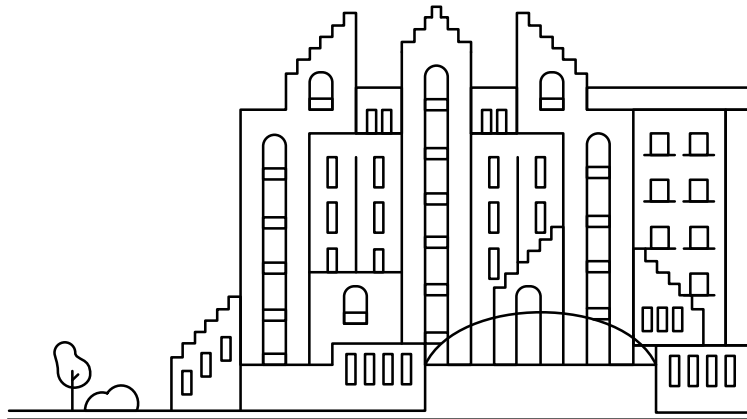
[Cost of living in Hamburg](#)

[Tenant rights in Germany](#)

Further useful information and accommodation listed can be found on [HousingAnywhere](#).

Please note BIMM Institute is not responsible for content featured on third-party websites and content / links may change.

Planning your move to Germany



As you plan your move to Germany, you will find that some research and preparation of various important items will help make your relocation all the easier.

This section gives further information on the legal documents you will require to complete your move, including taking out Health Insurance and securing your student visa if applicable to you.

What legal documents will I require?

Registering in Germany:

If you're not already listed as a resident in Germany, please make this a priority, as it's tricky to do anything without your Anmeldung (registration – please see the glossary on page 44 for more details). You must register at your local Einwohnermeldeamt (registration office) within 14 days of arrival – appointments are hard to come by in peak seasons, so make sure you get this box ticked as soon as possible!

Health insurance

Take out a health insurance policy, or double check that your current provider is still effective abroad. It's a legal requirement to be insured in Germany and you can be hit with a hefty fine if you are not, so please make sure this is in order. Further information on health insurance and how to arrange this can be found on pages 52/53.

Student visa

If applicable, you will need to ensure you have an up-to-date student visa. The BIMM Institute Germany Admissions Team can provide you with evidence stating that you are due to enrol as a student with us, which can be used to support your visa application. However, this can only be provided once you have returned your signed Education Agreement and paid your deposit – if you have any questions regarding this, please contact our admissions department directly at hamburg@bimm-institute.de.

Full information on the process of applying for a student visa can be found on page 50.

Bank account

To make your life a little easier here, you might want to open a German bank account. Whilst it seems a little daunting, it's relatively easy – although you may want to bring a German speaking friend with you to your appointment if you're not too confident with the language and decide to go for a high-street bank.

To open an account, you will generally need the following:

- A valid government-issued photo ID or passport.
- Confirmation of your registration (Anmeldung).
- If applicable, your visa.

It may be quicker and more practical to open an online bank account, such as with N26. Some of these online banks do not require an Anmeldung and could be a good option when you first arrive. Note that they will require a valid government-issued photo ID for identity verification purposes.

SCHUFA (credit score)

It's always wise to get a SCHUFA (credit score) if you're looking to enter into any form of contract (for example, a rental agreement or phone plan).

It's essentially a report stating that you have (or haven't!) paid all your bills on time. It's created as soon as you get an Anmeldung, and only applies within Germany – your credit score from your home country won't affect your SCHUFA here.

The easiest way to get hold of yours is to order a Schufa Bonitätsauskunft from www.schufa.de, although it can take a few weeks to be processed.

SIM card / phone contract

While it's of course not legally necessary, you may want to get a German SIM card for your phone to cut down on costs – if your phone is locked to your current network, then you can ask your service provider to unlock your phone and allow another SIM card access for a relatively small fee.

There are numerous pre-paid and contract options, and we recommend using a service like [Check 24](#) to compare plans and find one that is suitable and cost-effective for you.

Of course, different regions have different legal requirements, but at the time of printing all the information here is up to date. If you have any questions, we'd advise you to contact your local council or embassy to see if they need any additional documents.



Visa information

EU, Swiss or EEA students

If you are an EU, Swiss or EEA student, you can move to Germany and begin your studies at BIMM Institute without the need for a visa. All you need to do is register with the local authorities within 2 weeks of your arrival to let them know you're here.

Non-EU students

If you are a non-EU student, you may need to apply for a visa to study at BIMM Institute. You can get immigration and visa support throughout your time with us – from when you apply to when you graduate.

Germany offers positive terms for international students. During your studies in Germany, you are generally allowed to do 120 full days or 240 half-days of paid work and take small student jobs. In exceptional circumstances your local foreigner's office may impose further restrictions.

The ability to work during your studies can help you engage with the creative industries during the semester or holiday periods, as well as have part-time employment to support your living costs.

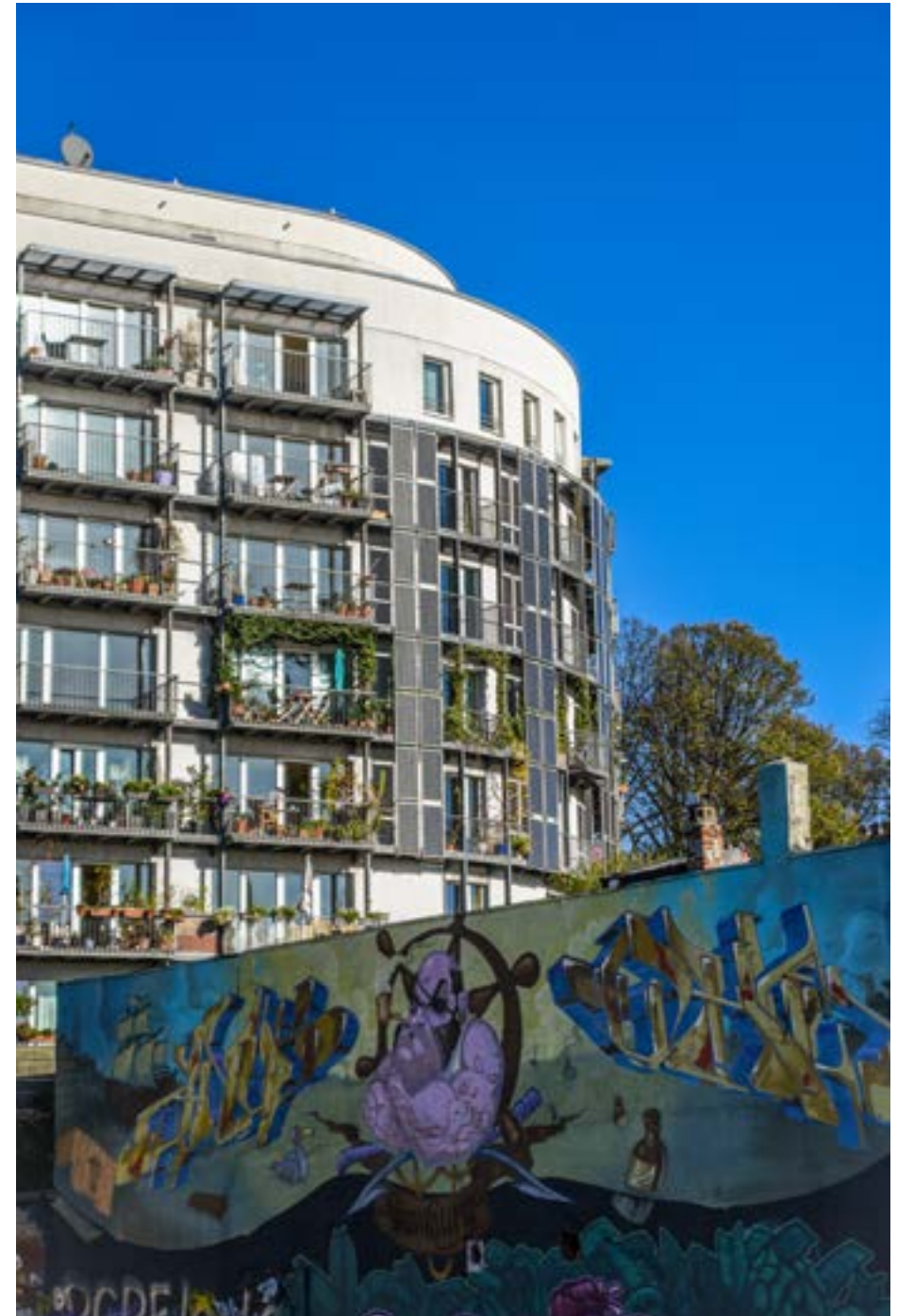
Documents must be presented proving that you have been accepted for studies at BIMM Institute. BIMM Institute's Admissions Team will provide you with the following documents on request, once you have accepted your offer:

- Course confirmation letter: This details the start and end date of your studies, and the credits for each year of passed and completed study.
- Anabin educator registration: A supporting document demonstrating BIMM Institute's recognition as an educator on the Central Office for Foreign Education (ZAB) database.

The German mission (embassy) abroad will forward your visa application for an opinion to the foreigner's authority in Hamburg. The German mission can only issue the visa for entry once the foreigners' authority has given its approval.

It should be noted the process can take up to 90 days, so we recommend getting the process started as early as possible, so please don't delay and contact your local German embassy for further information on how to apply for a visa as soon as you have accepted your offer of study at BIMM Institute. Please note also that having valid health insurance coverage is a condition of being issued a visa, and further information can be found in the 'Health insurance' section of this guide.

Further information on applying for a student visa, and a list of overseas German embassies, can be found [here](#), or search online for the Auswärtiges Amt or German Federal Foreign Office.



Health insurance

Health insurance is a legal requirement for all residents in Germany, including students. Some students will automatically be insured under their family's policy (generally those under 26 years old of German nationality/residence), or via Europe's European Health Insurance Card (EHIC) scheme.

If your nationality is non-European, it is likely you will need a Health Insurance policy covering the duration of your studies/ your stay in Germany. It is illegal to not have Health Insurance coverage, and for non-EU students this can constitute a violation of your visa requirements.

There are several public and private insurance companies in Germany who offer similar levels of cover, meaning it can sometimes be confusing to determine where to begin when taking out a health insurance policy. The prices can vary quite significantly, and higher prices don't always guarantee a better-quality service or level of coverage.

Student health insurance with TK Insurance

All students at BIMM Institute are eligible for cover under TK Health Insurance.

TK (Techniker Krankenkasse) is a German public health insurance company which offers, in addition to comprehensive medical services, a Welcome to Germany Service, which supports foreign students with an English-speaking team during their arrival in Germany.

BIMM Institute students pay the same fees as students at state-recognised universities. Therefore, if you take out health insurance with TK, you can be reassured that you are receiving comprehensive coverage at a fair price. Current information for students, including monthly fees, can be accessed on [TK's website](#).

We recommend arranging for your health insurance policy to begin for when you plan to arrive in Germany. To arrange coverage with TK, simply get in touch with Patricia Fuge, BIMM Institute Hamburg's contact at TK:

Patricia Fuge
+49 151 62448166
patricia.fuge@tk.de

If you would rather arrange your health insurance once you have arrived and begun your studies, please ensure you have a valid travel insurance policy for the duration of the time you are uninsured. Please note that travel insurance is intended for temporary travel, and you will therefore be required to take out a permanent Health Insurance plan shortly after your move to Germany.

Some important information:

Students insured in a European country are exempt from the insurance obligation as a rule. Contact a German public health insurance provider to have the exemption confirmed.

Travel health insurance does not provide sufficient coverage for studies in Germany. Therefore, do not take out travel health insurance for the duration of your stay.

Please make sure that your health insurance covers all health risks, as high treatment costs apply, which you have to bear if not covered by your insurance.

International students who can take out valid insurance only once they are in Germany can notify us accordingly after they arrive.

If you need proof of health insurance to apply for a visa, you can take out a provisional policy to cover the first 3 months of your stay. Once you arrive in Germany, you then take out health insurance for the duration of your studies.

See the [Hamburg city homepage](#) for more information about health insurance for international students.

Any type of health insurance that is not provided by a German public health insurance provider must be reviewed by a public health provider. If your health insurance policy provides sufficient coverage for the duration of your studies in Germany, any German public health provider can notify us of your exemption from the public health insurance obligation.

Language schools

If you would like to build your language skills, the following schools are located centrally and offer German courses for different levels:

[VHS \(Volkshochschule Hamburg\)](#)

Schanzenstraße 75, 20357 Hamburg

Tel.: 040-428 41-2752

Email: service@vhs-hamburg.de

[Germania Akademie Hamburg:](#)

Gänsemarkt 44, 20354 Hamburg

Tel.: 040-244 341-74

Email: info@germania-akademie.de

*Germania Akademie is offering 10% on any course fee to BIMM students. Just contact them via email.

[Sprachschule Aktiv:](#)

Großer Burstah 25, 20457 Hamburg

Tel: 040-525 95 454

Whatsapp: +49 1525 26 8 27 61

Email: hamburg@deutschakademie.de

[did Deutsch Institut:](#)

Esplanade 6, 20354 Hamburg

Tel.: 069-240 04 560

Email: office@did.de

*did Deutsch Institut is offering 15% on any course fee to BIMM students. Just contact them via email.



Essential Equipment

Regardless of course level, we advise that you have the following equipment ready for the start of your course:



Bass

- Bass, lead and tuner
- Metronome/Metronome app (Pro Metronome)
- Headphones and 1/4 jack input adapter
- Stationery & manuscript paper
- Ear plugs



Guitar

- Guitar, lead and tuner
- Metronome/Metronome app (Pro Metronome)
- Headphones and 1/4 jack input
- Stationery & manuscript paper
- Ear plugs
- Capo, Slide
- Various plectrums



Vocals

- Microphone and lead
- Metronome/Metronome app (Pro Metronome)
- Stationery and manuscript paper
- Ear plugs



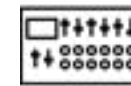
Songwriting

- Laptop or Computer
- Metronome/Metronome app (Pro Metronome)
- Stationery and manuscript paper
- Ear plugs



Drums

- Sticks – several good quality pairs (7A-2B weight), brushes (wire retractable), hot rods, mallets etc., all in a stick bag.
- Metronome/Metronome app (Pro Metronome)
- Practice pad – one that you can use on its own
- Headphones and 1/4 jack input adapter
- Stationery and manuscript paper
- Ear plugs



Music Production

- Computer
- Audio Interface
- DAW (Digital Audio Workstation)



Music Business

- BIMM Institute recommends students have:
- A laptop or tablet device with wireless capabilities for inclass research and other tasks.

All music students are strongly advised to wear ear protection in class when practicing or performing. BIMM Institute supplies ear-plugs but you may find ordering your own more comfortable.

Student perks & discounts

Being a student at BIMM Institute brings with it a variety of perks and discounts. These range from discounts with top manufacturers, ensuring you have access to the best resources to support you with your creative work, to local services which may make your stay more enjoyable, such as cafes and language schools.

Below are some examples of the perks you'll enjoy as a BIMM Institute student.

Adam Audio

Adam Audio are one of the most popular manufacturers in professional studio monitors. Used in a huge number of studios around the world, Adam studio monitors are amongst the most dependable and desirable audio monitoring tools available.

Ideal for both professional and home project studios, Adam's monitors are built to deliver high-quality sound you can trust, and BIMM Institute students can access an incredible 25% discount on all Adam Audio products!

Shure

With a history of innovation that began in 1925, Shure has turned a passion for making great microphones and audio electronics into an obsession. Shure continues to set the worldwide industry standard for superior, reliable products.

Iconic performers, leaders, and communicators trust Shure to deliver their messages clearly for all to hear. From microphones to headphones, and conferencing gear, Shure makes products that help define sound. The company takes equipment issues out of the audio equation so that people can concentrate on their message or performance with confidence.

BIMM Institute students can get a 25% discount on products at [Shure](#).

Spotify

BIMM Institute students receive a student discount when signing up during their semesters.

Apple Education Discount

BIMM Institute students have access to savings on Apple software and hardware, such as discounts on a new Mac or iPad with Apple education pricing.

Ableton

Ableton makes Live, Push and Link – unique software and hardware for music creation and performance. BIMM Institute students are eligible for an educational discount at Ableton, and all students receive a 40% education discount on Live Standard or Suite.

FIKA App

Fika is a remotely accessible mental fitness platform, empowering organisations, education institutions and individuals with guided mental skills development courses with proven benefits on mental wellbeing and performance, and BIMM Institute Students have free account and app access.

For more information on the Perks & Discounts available to BIMM Institute students, head over to the Student Support page on the [BIMM Institute website](#). Please note that perks and discounts can change, and this information is correct at the point of publication.

Join us in Hamburg

Join us in Hamburg

To apply to BIMM Institute Hamburg, please contact our Admissions Team or use the online application form at bimm-institute.de/direct-application.

We can't wait for you to join us in this incredible city – and start your career (and life) in the creative industries.

If you have any further questions, we are always on hand to help. Please don't hesitate to reach out to BIMM Institute's Student Support team:

Tel:

+49 (0) 40 874 09 632

Email:

studentsupporthamburg@bimm-institute.de

BIMM Institute Hamburg

Neuer Kamp 30b
Floor 2
20357 Hamburg – Germany



BIMMHamburg



BIMMHamburg



tvbimm



bimm_hamburg

Glossary

Page 23 moovit: https://moovitapp.com/london_and_south_east-2122/poi/en-gb

Page 23 HVV: <https://www.hvv.de/en>

Page 23 Network plan: <https://www.hvv.de/resource/blob/3204/cb5eb6d0064468ae2f076fc08335114/hvv-usar-plan-en-data.pdf>

Page 23 here: <https://www.hvv.de/en/tickets/weekly-monthly-tickets/tickets-for-students>

Page 24 Swapfiets: <https://swapfiets.de/en>

Page 24 Emmy: <https://hamburg.emmy-sharing.de/en/>

Page 24 StadtRAD: <https://stadtrad.hamburg.de/en>

Page 24 Bike Hire Altona: <https://www.fahrradverleih-altona.de/mietfahr%C3%A4der/>

Page 24 Hamburg City Cycles: <https://www.hccitycycles.de/en/bike-rental-hamburg.html>

Page 24 Car Rental Price Comparison: <https://www.rentalcars.com/en/>

Page 24 Cambio Car Sharing: https://www.cambio-carsharing.de/cms/carsharing/en/1/cms?cms_knuuid=383ac52d-6f2d-4bcf-a2ec-6db0ff9defc5&cms_f4=1&cms_f8=

Page 24 Sixt Car Sharing: <https://www.sixt.de/share/carsharing/hamburg/#/>

Page 24 Share Now: <https://www.share-now.com/>

Page 24 Miles Car Sharing: <https://miles-mobility.com/en/home>

Page 24 Hamburg Private Car Pooling: <https://www.hamburg.de/mitfahrzentralen/>

Page 26 HVV's website: <https://www.hvv.de/en>

Page 26 Free Now: <https://www.free-now.com/uk/>

Page 26 Uber: <https://www.uber.com/global/en/cities/hamburg/>

Page 26 website: <https://www.hamburg-airport.de/en>

Page 29 Welcome Portal: <https://www.hamburg.com/welcome/>

Page 32 Hamburg Student Facebook Group: <https://www.facebook.com/groups/bimmhamburgstudentgroup>

Page 35 Schufa Auskunft: <https://www.schufa.de/>

Page 43 Spotahome: <https://www.spotahome.com/>

Page 44 website: <https://www.hamburg.de/behoerdenfinder/info/11256135/n0/>

Page 45 Registration in Hamburg: <https://housinganywhere.com/Hamburg--Germany/registration-in-hamburg>

Page 45 Moving to Germany checklist: <https://housinganywhere.com/Germany/moving-to-germany-checklist>

Page 45 Cost of living in Hamburg: <https://housinganywhere.com/Hamburg--Germany/cost-of-living-in-hamburg>

Page 45 Tenant Rights in Hamburg: <https://housinganywhere.com/Germany/tenant-rights-in-germany>

Page 45 HousingAnywhere: <https://housinganywhere.com/>

Page 48 Check24: <https://www.check24.de/>

Page 50 here: <https://www.auswaertiges-amt.de/en/visa-service/buergerservice/faq/-/606850>

Page 52 TK's website: <https://www.tk.de/techniker/leistungen-und-mitgliedschaft/informationen-versicherte/veraenderung-berufliche-situation/versichert-als-studierende/haeufige-fragen-fuer-studierende/beitragshoehe-beitrag-student-kvds-2007468?tkcm=aaus%20>

Page 53 Hamburg city homepage: <https://www.hamburg.com/welcome/newcomers/study/11872998/health-insurance/>

Page 54 VHS: <https://www.vhs-hamburg.de/>

Page 54 Germania Akademie Hamburg: <https://germania-akademie.de/en/>

Page 54 Sprachschule Aktiv: <https://www.sprachschule-aktiv-hamburg.de/en/>

Page 54 did Deutsch Institut: <https://www.did.de/en/hamburg>

Page 58 Shure: <https://www.shure.com/de-DE>

Page 59 BIMM Institute website: <https://www.bimm-institute.de/student-support/>



BIMM
INSTITUTE

Hamburg

If you have any further questions, please don't
hesitate to contact our Student Support Team.

Tel: +49 (0)40 874 09 632

Email: studentsupporthamburg@bimm-institute.de

BIMM Institute Hamburg

Neuer Kamp 30b

Floor 2

20357 Hamburg

