

Audition Guidelines

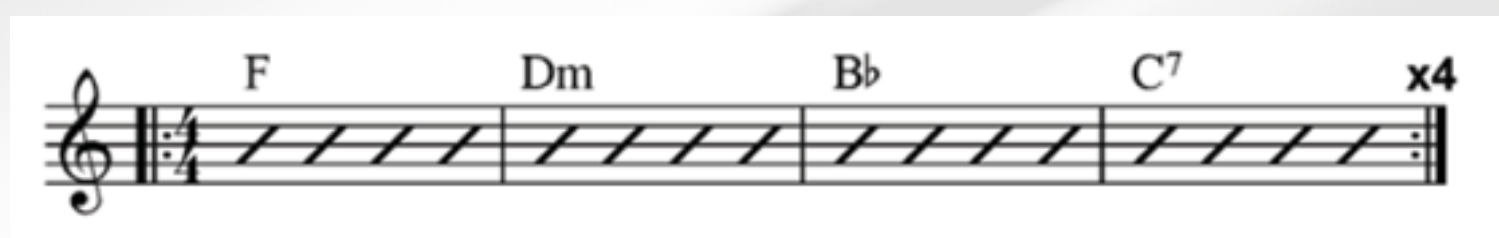
BMus (Hons) Popular Music Performance (Keys)
& Songwriting

What to expect

Auditions last one hour and are 1-1 with a BIMM assessor. You will be asked some questions about yourself and will have the opportunity to ask any questions you may have about the course.

What to prepare ahead of the day

- Please prepare a song to perform on keys that lasts around 3 minutes. It can be an original or cover and you can perform solo or to a backing track. We will have a keyboard available for you on the day. If you'd like to bring your own you are more than welcome to. If you are performing to a backing track, please ensure you bring this with you, or that it is available through a web browser, such as YouTube.
- Please prepare approximately 16 bars of two contrasting styles to play at any preferred tempo. Examples include, rock, blues, punk, soul, metal, reggae etc.
- Your assessor will work through some technical exercises with you such as:
 - Major and minor scales
 - Major, minor, major 7th, minor 7th, dominant 7th chords
 - Create a keyboard part for the following chord sequence, varying the part with each repeat (using different chord voicing and/or melodic lines)



- Please prepare an original song to perform live. Please ensure you have your instrument of choice or backing track ready. We will have a keyboard available if you require this. Please be prepared to discuss your songwriting process.
- We also require you to bring a demo/example of your Songwriting work with you on the day. You can bring it with you on a suitable device or send it to admissions@bimm.co.uk ahead of your audition. Your demo:
 - Does not have to be mastered.
 - Should have at least two tracks on the demo creating the whole song.
 - Should be different to the song you will perform live in the audition
 - Can be a home demo created in a D.A.W
 - Can be a live demo arranged and recorded in a studio
- You will be asked to work through some sight reading and music theory-based exercises. Please do not worry if your theory knowledge is limited. We offer a practitioner support scheme to those who need to brush up their theory in the first year of their course

If you have any questions about what to prepare please email
admissions@bimm.ac.uk



BIMM
INSTITUTE