

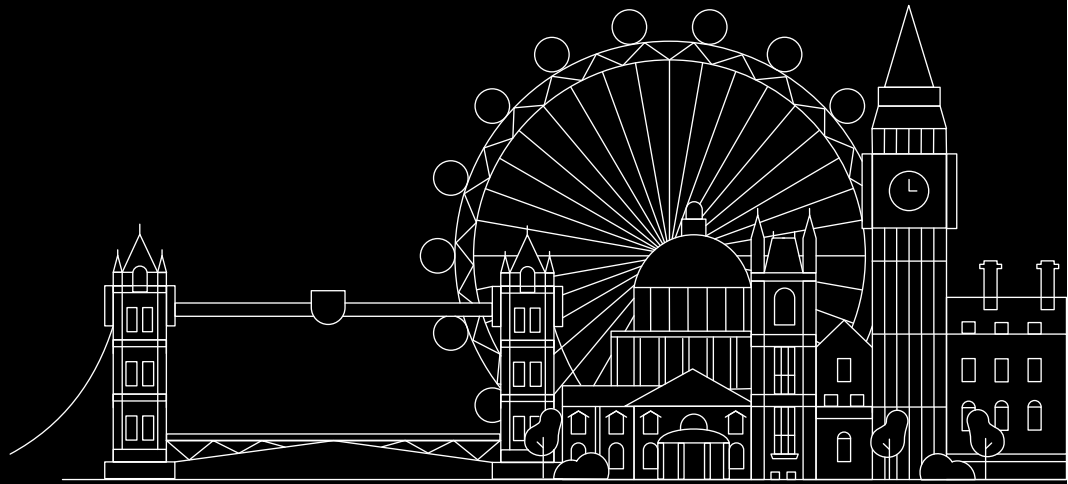


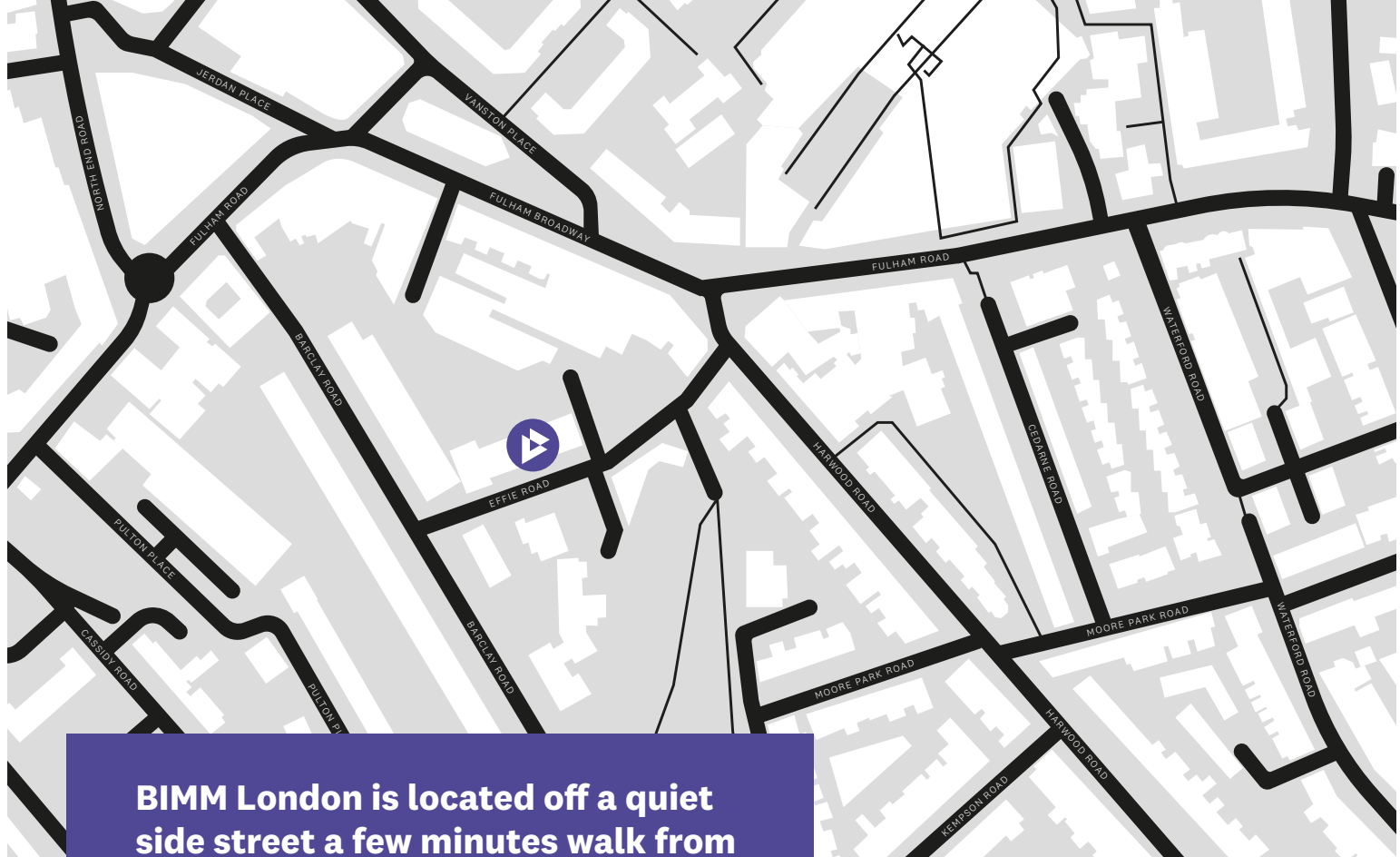
BIMM
INSTITUTE

London

Directions

BIMM Institute London
Barclay House
Effie Road
Fulham
SW6 1EN





BIMM London is located off a quiet side street a few minutes walk from Fulham Broadway Tube Station.

Travelling to BIMM London by Train

Walking from West Brompton - Approximately 15 minutes
Exit the station on Lillie Road. Turn left onto Ongar road. You will come to a roundabout, turn left and continue onto Farm Lane. Turn left onto Vanston Place and left again onto Fulham Broadway. Turn right onto Harwood Road and then the next right onto Effie Road. BIMM is located about halfway down Effie Road.

Underground

The district line towards Wimbledon leaving every 8 minutes will stop at Fulham Broadway.

Taxi

A taxi from West Brompton station to BIMM London should cost approximately £7.

Walking from Imperial Wharf - Approximately 18 minutes
Exit the station on Townmead Road, continuing onto Imperial Road. Continue you on this road, passing along the edge of Eel Brook Common. Turn left off Erin Close onto Effie Road. BIMM is located about halfway down Effie Road.

Bus

Exit the station onto Townmead Road. Bus Number 391 will stop close to the station (Stop J) stopping at Fulham Town Hall (Stop H). From there cross the road onto Effie Road. BIMM is located about halfway down Effie Road.

Taxi

A taxi from Imperial Wharf station to BIMM London should cost approximately £7.

Travelling to BIMM London by Underground

Fulham Broadway is a 2 minute walk from BIMM London. Exit the station, turn right and cross the road at the traffic lights. Take the next right and BIMM will be on your right just past the coffee shop.

Parking

The closest car park is within the shopping complex Fulham Broadway.