



BIMM  
INSTITUTE

Brighton

# Acceptance Pack

Your Music Career Starts Here

Year 2020/21

[bimm.co.uk](http://bimm.co.uk)

# Welcome

---

To Your BIMM Institute **Brighton**



## Congratulations On Being Offered A Place!

---

BIMM Institute Brighton was founded in 2002 with less than 100 students. Since then our student population has grown to over 1400, with each year bringing a unique creative output from the students that makes BIMM Brighton a real force for developing you and focusing your careers goals from day one.

Our student population is made up of a diverse community of creatives, studying courses that range from RSL awarded further education to BIMM validated undergraduate degrees and master's, all tailored to help you achieve what you want.

This year we have launched a new portfolio of courses that have been created to maximise your potential in whatever you want to achieve in the music industry. This new suite of courses have been created in close consultation with the music industry, alumni and of course our industry professional lecturers and staff who have created courses truly unique in creative education. BIMM Brighton also has a wider creative community with our new partnerships with the Institute of Contemporary Theatre (ICTheatre) and Screen and Film School (SFS), creating an even bigger network for you to collaborate with and start your journey towards a sustainable creative career.

You will be working with and guided through your course by the music industries very best. All BIMM lecturers are employed based on their vast experience in that industry, combining their teaching at BIMM with professional music industry profiles as performers, writers, arrangers, producers, business, and events entrepreneurs. This approach to delivering a modern creative curriculum, allied with our fantastic visiting faculty, masterclass guest programme, careers department and industry standard resources, is designed to provide a creative environment that is challenging, stimulating, and connected to the wider industry. This enables You, the professionals of tomorrow to hone your skills and knowledge in whatever field of the industry you wish to be in so, whatever your ambitions, BIMM Institute Brighton's will give you the very best guidance and opportunities to achieve your goals.

We look forward to welcoming you this academic year and best of luck with all you wish to achieve.

A handwritten signature in black ink, appearing to read 'Martin Wright'.

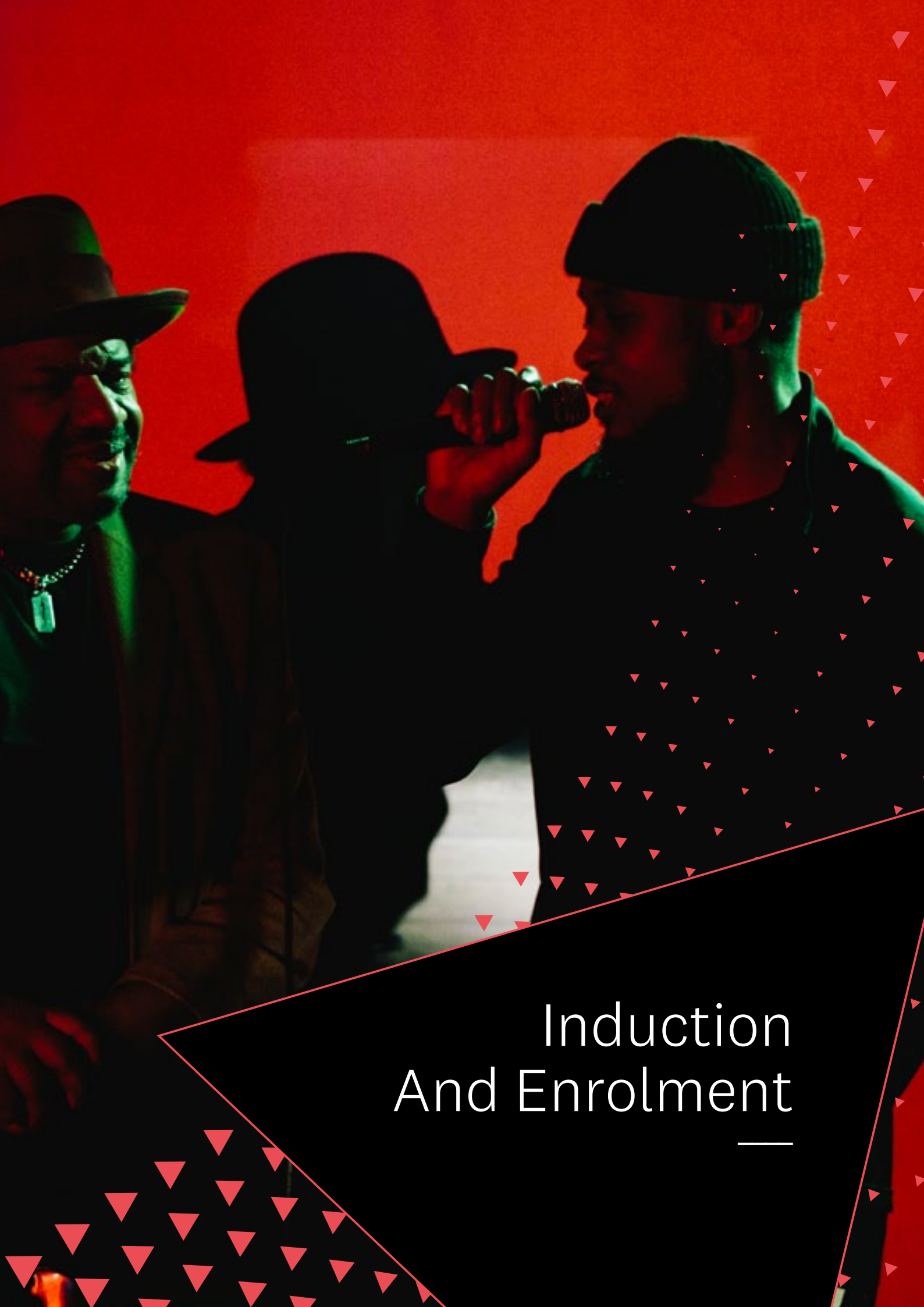
**Martin Wright**  
College Principal

# Contents

---

Induction and Enrolment	5
BIMM Mentor Scheme	7
Student Support	8
Brighton Life	14
Get Connected	18
Freshers' Guide	21
Faculty Information	23





# Induction And Enrolment

---

In order to prepare you for studying at BIMM Institute Brighton, we would like you to attend a remote enrolment session.

Towards the end of August you will be sent instructions on how to pre-enrol onto your course. you will be asked to complete a pre-enrolment form and upload some essential personal information, as detailed at the bottom of this page.

It is really important that this part of enrolment is completed:

- before you attend a remote enrolment session
- before you fill in your online enrolment form

You will be asked to complete your enrolment online at some point during the week commencing 14th September.

You will be informed of the exact date once you have completed your pre-enrolment. During your online enrolment you will receive important information about the college and your course, including your timetable and course book plus you will get the opportunity to meet your future class mates.

Induction and freshers' events start from 14th September and will be a fantastic opportunity to meet and network with lots of bimm students and watch some brilliant bands.

All students enrolling will also be invited to an Induction Event.

## Term Dates

---

### **Commencing**

September 2020

Induction and Freshers: 14/09/20 - 25/09/20

Semester 1: 28/09/2020 to 22/01/21  
(Winter Break - 19/12/20 - 3/01/21)

Semester 2: 25/01/21 - 26/05/21  
(Spring Break & Semester 1 Re-sits 27/03/21 - 11/04/21)  
(Semester 2 Re-sits in WC 26/07/21)

## Useful Contacts

---

### **Admissions**

admissions@bimm.co.uk

### **Student Support**

studentsupportbrighton@bimm.co.uk

### **Finance**

financeenquiries@bimm.co.uk

## Online Enrolment For Your Course

---

All students are required to complete an online form as part of the enrolment process. You will have been sent an e-mail with a link to the enrolment portal which will guide you through all the required processes.

Below is a list of things that **MUST** be completed:

- **Enrolment form** – must be completed in full and submitted – the link to this form will have been sent to you by e-mail.

- **Passport style photo** – this will be used for your student ID card. Please follow the guidelines on the enrolment portal. You will not be able to enter BIMM buildings without an ID card.

- **Proof of ID** – please upload a colour scan of your passport/driving license/Citizen card to the enrolment portal

- **Online Enrolment Courses** – you will be given access to complete a series of short online courses and tasks to become enrolled, further details will be sent to you via email.

**The online enrolment form must be completed in full before you can become an enrolled student at BIMM Institute.**

PLEASE NOTE: Timetables cannot be provided before enrolment and if you have not completed this process in full then you will not be granted access to your timetable information when it becomes available. This is a full-time course and the timetables given to you at enrolment are not flexible. Any part-time jobs must work around the timetable given.

# BIMM Mentor Scheme

---



The BIMM Mentor Scheme is a peer to peer support service for new students prior to and during the first year of study.

BIMM Mentors are selected and trained recent alumni who have 'BIMM there, done that...' These alumni are experts on BIMM life, and know how to get the best out of your experience and the city you have chosen to study in.

The Mentor Scheme is open to all students, via our very own safe and secure BIMM Connect app. Once you have accepted your BIMM offer we will give you instructions on how to access BIMM Connect and give you more details on the scheme.

Mentees can engage in a range of online connections on BIMM Connect prior to the start of semester one and more in person connections later in the term and the academic year.

These interactions include one on one and group chats and you can also access up to date local information, FAQs and handy tips on student life. The Mentors will also be around during Freshers and parts of induction so you can see a familiar face who can offer invaluable advice on BIMM and local info from a student perspective.

More information will be circulated about the scheme soon, so keep your peepers peeled.



# Student Support

---



We are committed to helping students fulfil their potential during their time at The BIMM University Brighton and we place an emphasis on supporting the development of our students both academically and personally. The Student Services team is available at every step of the student journey to offer confidential support and guidance on a whole range of issues. We also offer a wide range of additional support and wellbeing initiatives throughout the year that are designed to meet students' academic and welfare needs to enrich the BIMM experience.

## Pastoral & Emotional Support

---

The Student Support team holds individual one-on-one sessions with students to discuss any issue they may be struggling with. These are strictly confidential and can include any topic ranging from personal issues, attendance and assessment related queries, discussion of special considerations we may need to take into account to support your studies and booking into one of the other support services we offer. We actively encourage students to book appointments to talk with us at any point during their studies for extra support.

## Academic Tutorials and Professional Development

---

Students are encouraged to book regular one-to-one tutorials to work on technique, master their academic writing and discuss their skills, development and long/short term career goals. Tutorials give students a unique opportunity to be individually guided by the most experienced industry professionals in the country.

## Disability Support

---

BIMM Institute Brighton is committed to a policy of equal opportunities and provides confidential advice and support to students with varying disabilities and specific learning difficulties.

We are committed to ensuring that students with specific needs are provided with equal access to their chosen course of study and facilities. The College is working towards removing any barriers which might prevent an individual from actively participating in student life.

If students indicate on their application and/or pre-enrolment form that they require further support, then a member of the Student Support team will be in contact to arrange an individual consultation. This is to ensure all requirements are catered for.

We work with students with a wide range of disabilities, including but by no means restricted to:

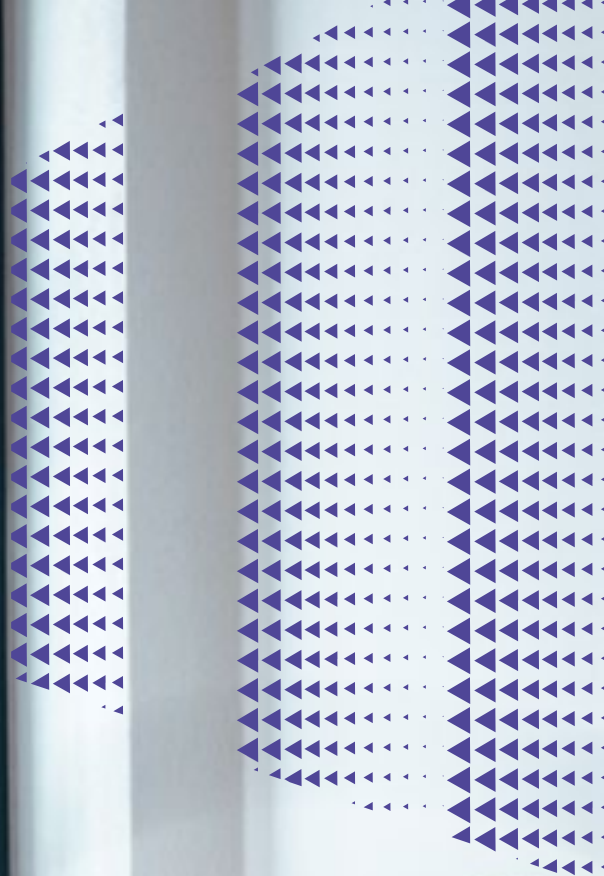
- Specific learning differences (such as dyslexia, dyspraxia)
- Mental health conditions (such as depression, bipolar disorder, anxiety)
- Students that have a neurodevelopmental condition (ADHD, Autistic students, Tourettes)
- Long-term medical conditions (such as HIV, cancer, multiple sclerosis)
- Unseen disabilities (such as diabetes, asthma, epilepsy)
- Sensory impairments (such as visual/hearing impairment)
- Mobility or physical impairments (such as paralysis, arthritis)

Students that have any of the above conditions and can obtain either medical evidence or, in the case of specific learning differences, an Educational Psychologists Report, may be eligible for DSA (The Disabled Students' Allowance). The DSA can fund additional support such as specialist one-to-one study skills or mentoring, reasonable adjustments and technological aids.

Students who do not have an Educational Psychologist Report, or suspect a specific learning difference should contact the Student Support team who can arrange the relevant assessments and advise on accessing support. Please note that Educational Psychologist Reports are not provided by the College and cost in the region of £380. You can find more information regarding DSA (including eligibility and application forms) here [www.gov.uk/disabled-students-allowances-dsas/overview](http://www.gov.uk/disabled-students-allowances-dsas/overview)

We advise that students apply for this as early as possible to ensure that support can be put in place at the start of the academic year, though there is no formal deadline for applications to be received.

If you require any additional information or would like to discuss this further with one of the Student Support team, please contact **[studentsupportbrighton@bimm.co.uk](mailto:studentsupportbrighton@bimm.co.uk)**



# Student Representative Programme

---

## The Programme

Student Representatives are elected in term two of each academic year, with existing Reps remaining in post for term one until election time. There is one Student Rep elected from each course and academic year.

## The Role of a Student Rep

The main role of a Student Rep is to liaise and represent the views and opinions of students on the course and to feedback to members of academic and support staff via the termly Student Representation Forums. Feedback and agreed action points are then taken forward to the Board of Study meetings which take place a little later in the term.

The outcomes of these meetings are then published on BIMM's Virtual Learning Environment (VLE), Moodle and fed upwards to the Academic Development and Quality Assurance (ADQA) cycle of meetings. A Student Reps from each College are invited to represent the student body at one of the four meetings per term in London.

As a Student Rep you will sit on all SRF Meetings and potentially some Board meetings and push for changes on your course that the students want to see. For this to be possible and to meet the full potential of the role you will be the central point of communication for students on your course. More information on the role of Student Reps and elections will be available as term one progresses. If you are interested in learning more about the role please get in touch with **studentsupportbrighton@bimm.co.uk**

Student Representatives are elected in term two of each academic year, with existing Reps remaining in post for term one until election time. There is one Student Rep elected from each course and academic year.

# Therapeutic Support

---

BIMM offers short-term therapeutic support to students, supporting a variety of issues including anxiety, low mood and depression, confidence, self-harm and suicidal feelings, relationship or family issues, identity and self-image and other difficulties.

These sessions take the form of one to one meetings with a professional, during which you may speak about your feelings, reactions and experiences in a confidential space. It can be helpful to explore difficult emotions, relationships or events in your life with a non-judgemental, caring professional who is solely there to focus on your needs.

The service provided is experienced and abides by the British Association for Counselling and Psychotherapy Code of Ethics.

# BIMM Student Association (BSA)

---

The Brighton Student Association has been created to enhance the student community by providing Societies led by students for students. We currently have several Societies up and running and are keen for you to get involved. Some of the already established Societies include LGBTQ+, Women's, Hip Hop Appreciation, The Vegan and The Events Society.

There is also scope for many more and you are welcome to get involved or even start your own. There will be much more info available over the enrolment period but if you are keen to get involved before you start your course get in touch via **brightonsocieties@bimm.co.uk**

The BSA will be running events over enrolment and across the academic year. Historically, including the Loft Sessions, the Green Door Store Gigs, the Music Production Nights and the Open Stage Nights. The BSA supports the Teenage Cancer Trust as its chosen charity.



# Recommended Resources

---

**BIMM Institute Brighton recommends that all students start to explore the resources highlighted below before term starts.**

## Journals & Magazines

---

**CMU** (Complete Music Update)  
**Music Week** (Main UK Industry Magazine)  
**M Magazine** (PRS Magazine)  
**Mojo Magazine**  
**NME**  
**Q Magazine**  
**The Guardian Guide**

## Twitter Feeds to Follow

---

@cdmblogs  
@bpi\_music  
@ppluk  
@CMU  
@songlinesmag  
@basca\_uk  
@theivors  
@MusicWeek  
@m\_magazineprs  
@prsformusic  
@prsfoundation  
@uk\_music  
@aim\_uk  
@recordoftheday  
@officialcharts  
@guardianmusic  
@thegreatescape

## Websites & Blogs

---

Create Digital Music – **cdm.link**  
Synthtopia – **synthtopia.com**  
PRS – **prsformusic.com**  
PPL – **ppluk.com**  
BASCA – **basca.org.uk**  
SONGLINES – **songlines.co.uk**  
The Quietus – **thequietus.com**  
Drowned in Sound – **drownedinsound.com**  
Fact – **factmag.com**  
Pitchfork – **pitchfork.com**  
The Line of Best Fit – **thelineofbestfit.com**  
The 405 – **thefourohfive.com**  
The Guardian Music – **theguardian.com/music**  
Clashmusic – **clashmusic.com**  
The Argus – **theargus.co.uk**  
The Great Escape Festival –  
**greatescapefestival.com**  
Playlists galore – **indieshuffle.com**  
Hip hop lovers – **allhiphop.com**  
General music blog – **thewildhoney pie.com**  
Metal – **terrifier.com**  
And more metal – **metalinjection.net**



# Brighton Life

---

**The city of Brighton and Hove really does have everything – sun, sea, brilliant clubs, loads of live music, great places to eat, fabulous shops and a real bohemian cosmopolitan vibe. it’s estimated that students form around 15% of the population here, so you can be confident that you’ll find plenty of like-minded people and lots to keep you occupied.**

## Culture

---

Brighton and Hove is a highly creative city with a diverse cultural scene and a wealth of theatres, galleries, live music and cinemas. Some of the most popular places exhibiting the best of culture in the south can be seen below:

**Theatre Royal Brighton, New Road** – two centuries old, this is the venue for pre-West End premieres and big touring shows

**The Dome/Corn Exchange, New Road** – an excellent venue for a wide variety of dance, music and theatre

**Komedia, Gardner Street** – a flag ship venue for cutting-edge comedy.

**Duke of York Picturehouse, Preston Circus** – this cinema shows the latest films, along with many independent movies, and provides regular themed screenings

**Pavilion Museum and Art Gallery, Pavilion Gardens** – set in the grounds of the Pavilion, this venue has rich historical collections and exciting exhibits both new and old. Plus, entrance is free!

**Concorde 2, Madeira Drive** – this music venue has legendary live bands, incredible club nights and the biggest sound and lighting system in Brighton.

The highlight of the cultural year is the annual Brighton Festival. Held in May, it is England’s biggest arts festival, attracting hundreds of performers to its three-week stint. You will be able to catch internationally renowned musicians, dancers, poets, comedians and writers.

This rich mix of performers can be found everywhere throughout the city, be it a bar, cafe, an established theatre or spilling out onto the streets and parks of Brighton.

The Great Escape Festival is held every May in Brighton, showcasing over 400 up and coming artists

from all over the world across 35 walk-able venues. With the biggest LGBTQ community in Europe, Brighton is the home to ‘Pride’, the UK’s biggest Gay Pride Carnival. People from around the world flock to this event, which celebrates the liberalism of Brighton’s lesbian, gay, bisexual and transgender culture.

## Brighton Facts and Figures

---

Population - 290,000 Source: Office for National Statistics estimate, 2016

Students in higher education - 38,000 Source: Higher Education Statistics Agency, 2018

Officially the happiest city in England for students Source: Sodexo University Lifestyle Survey, 2017

Economy valued at £56bn annually Source: Brighton and Hove City Council, 2018

## Nightlife

---

When the sun sets, Brighton’s legendary nightlife kicks in. The city boasts over 200 pubs and bars; the most bars and pubs per square mile than any other city in the UK. The majority of Brighton’s clubs, including Concorde 2, Patterns, Coalition and the Green Door Store hold gigs in the early evening before opening up to their regular club nights later on. There is an event to cater for every taste, almost every night of the week. Don’t worry about missing out on anything though – you’ll be handed flyers at every street corner and most pubs, bars and cafes will have the latest what’s on guide.

## Shopping

---

Brighton can satisfy all your shopping needs. Big name stores can be found in Churchill Square shopping centre and on Western Road, but if you’re looking for something a bit more off-beat then visit the bohemian North Laine; a laid-back area of independent clothes shops, cafes and record shops. This is not to be confused with the upmarket South Lanes area with its cobbled alleyways of exclusive fashion boutiques and expensive antiques

C  
-  
N  
E  
M  
A



Duke's at KOMEDIA

CINEMA - COMEDY - LIVE MUSIC - CLUB NIGHTS - FOOD - DRINK

GOURMET BURGER KITCHEN





## The Great Outdoors

---

Obviously, there's Brighton beach and the pier, but hop on one of the open-top buses that run from the seafront and you'll soon find yourself in some of England's most beautiful countryside. Devil's Dyke is the best place to enjoy breath taking views of the South Downs, while Stanmer Park has acres of open space and a traditional tearoom that should go down well with your family when they visit.

## Eating Out

---

Whatever your taste and budget you'll find plenty of places to eat in Brighton. There are over 400 restaurants, more than anywhere in the UK outside of London, which provide food from all cuisines.

## Transport

---

BIMM is well connected to the rest of the city via public transport.

**Bus** - The 'Brunswick Place' bus stop on Western Road is directly outside our main campus at BIMM West and is serviced by buses from all over the city;

- 1, 1A, 2 Hove – Kemp Town
- 5, 5A, 5B West Hove – London Road
- 20, 21, 21B Brighton Centre – Hanover
- 25, 46, 49 Portslade – Lewes Road – Moulsecoomb
- 6, 60, 700 South Coast – Brighton Centre

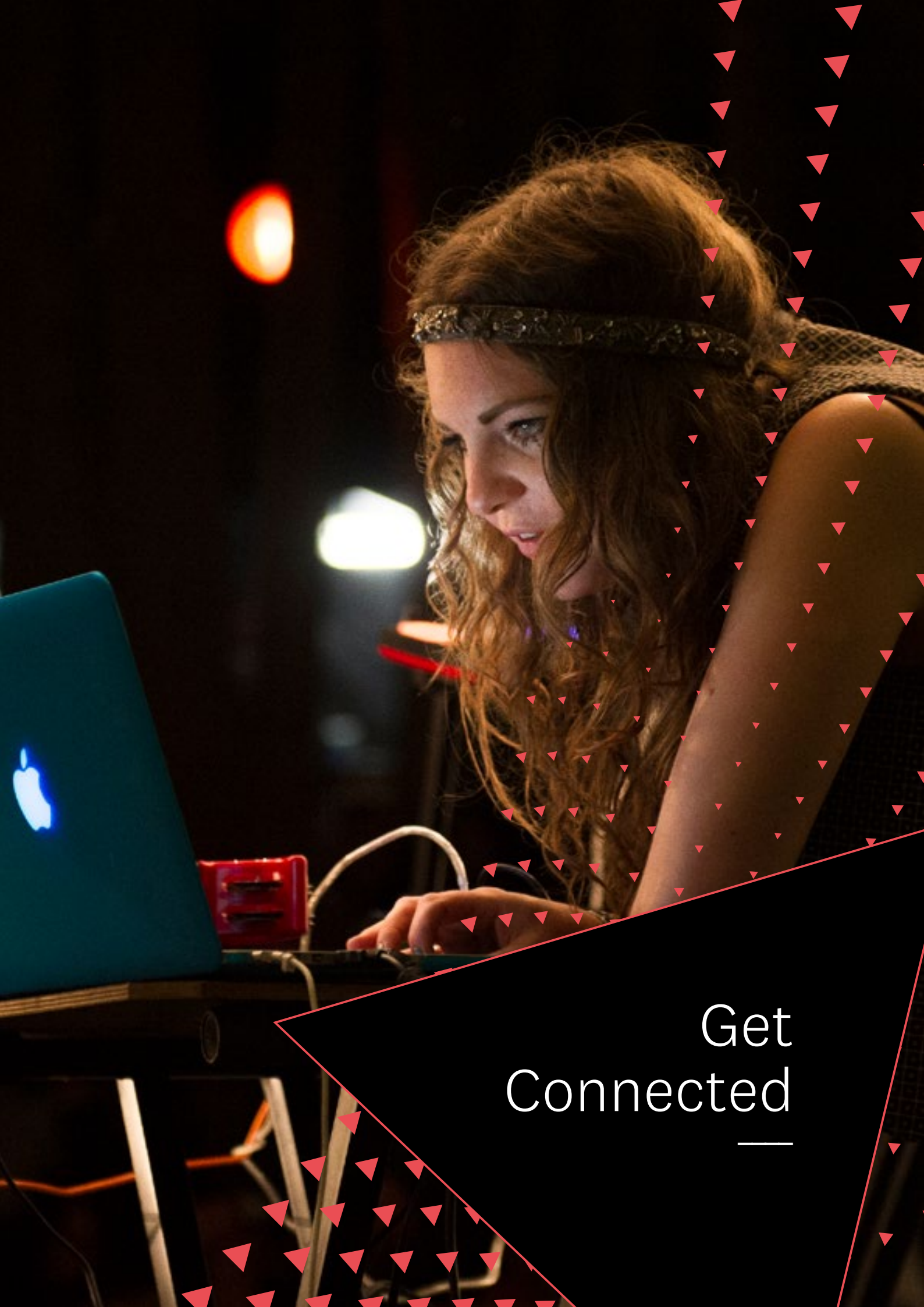
For details about service times and route information please refer to [www.buses.co.uk](http://www.buses.co.uk)

For cheaper bus travel in the Sussex area, students can get discounted tickets using the Brighton Bus App for Smart Phones. For more information visit the website [www.buses.co.uk/app](http://www.buses.co.uk/app)

**Train** - For those living outside of the city, BIMM is easily accessible from either Brighton or Hove mainline station. There are also frequent trains which run to and from London Victoria and London Bridge. Have a look on [www.southernrailway.com](http://www.southernrailway.com) for train times and ticket prices.

**Bike** - Brighton and Hove is very cyclist friendly with accessible cycle lanes and bike storage all over the city. If you live a short distance from the College it might be the most cost effective way to travel. Find out more about cycling in Brighton [www.brighton-hove.gov.uk/content/parking-and-travel/traveltransport-and-road-safety/cycling](http://www.brighton-hove.gov.uk/content/parking-and-travel/traveltransport-and-road-safety/cycling)





Get  
Connected

---

## Networking Events

---

BIMM hold networking events each term which is a great opportunity to get together with other students from different courses that have similar interests. Not only is it a way to find new friends and swap some phone numbers, but it's also a good place to start finding band members, producers, film makers, managers, writers or any other aspect of a creative industry that your network is part of.

## BIMM Gigs

---

Once you've got your band together, you can audition for one of BIMM's end-of-term gigs. We hold two of these a term, and utilise the amazing venues that are on our doorstep, such as Concorde 2 and The Old Market. In addition to these gigs we also have a long standing festivals programme where we can connect you with performance opportunities or work experience, along termly Lamplight gigs for Songwriters, and Event Management run Gigs at the Green Door Store. These are ticketed events with all proceeds going to charity, and are a great opportunity for students to get some live performance experience or put on a brilliant show for their peers, friends and families.

## BIMM Playlist

---

The BIMM playlist is a showcase of the best songwriting and production talent at our institute. Students have the opportunity to submit their demos to be reviewed by our Artist Development team and a selection of these songs will be professionally recorded and available to buy on a digital streaming platform. BIMM students and the wider music industry are included in the selection process and we see many great artist emerge from this real world experience we offer.

## Creative Collaboration

---

The BIMM community reaches far across the city with many opportunities to create with other aspiring professionals from a wide range of artistic fields.

**SFS & ICT** - Partnerships with Screen and Film School (SFS) and Institute for Contemporary Theatre (ICT) widens your creative community to the film and performing arts industries.

**Brighton Life** - BIMM's student run magazine has been published since 2016 giving music journalism and now MMMC students the opportunity to interview, review, write copy, edit and create this high quality magazine. This, like all BIMM collaborations are there to expand your network and apply what you are learning in a real world context.

**Pool Valley Recordings** - Students have an opportunity to run their own student-Run businesses. A great example of this in BIMM Brighton is Pool Valley Recordings where students sign bands for real money, negotiate contracts, and release music, working with other executives in the independent music sector. It doesn't get more real world than that which is why BIMM Brighton is the place to apply your skills into creating your own network in the music industry

## Careers & Industry Team

---

Your career in music starts here at BIMM and we

have a dedicated Careers and Industry team looking forward to working with you.

We support the next generation of music producers, performers and entrepreneurs in a number of ways. If you are a performer or songwriter, you will be invited to artist development tutorials where you will be advised on recording, gigs opportunities, your digital profile, photography, videos and promotion.

For industry professionals such as Event Managers, Journalists and Music Business students, there are numerous exciting placements at companies across labels and promoters, publishers, PR and magazines. Book a Careers tutorial to get advice on your CV or on starting your own business.

Make sure to log into your BIMM Connect app regularly to see the amazing work experience opportunities posted there each week, the different events you could attend and work at or even use it to connect with other BIMM students.

All students are welcome at our weekly run Careers Hubs where we bring the industry to you. Meet with your potential employers and learn about how they got to where they are today. You will meet the professionals, A&R, lawyers and festival managers; from all walks of the music industry, be ready to network and potentially bag that internship!





# Freshers' Guide

—

# Common Feelings

---

Moving away from home to a new city and starting University is an exciting opportunity for a big change. You get to make a whole new start in a new place with new people. You might feel a mixture of great excitement and nervousness – what will the course really be like? Will I get on with my housemates? Will I make friends? How do I look after myself?

Please remember that you are not alone in feeling this way. These are all questions that everyone in your situation is asking themselves. If you're worried about making friends, or not knowing the city, or how to make a Bolognese; remember that every other person around you feels the same way, and within just a couple of days you will feel more at home and comfortable than you can even imagine.

# Strategies For Coping

---

There are some important things to keep in mind when going through this experience of moving away from home. These will prepare you and help you to cope with any situation you stumble across.

**Look after yourself** – It takes time for new friends to really know you properly, which means you need to put your own welfare, health and safety at the top of your priorities.

**Know yourself and what you can handle** – This is a time when you can experiment and find a way of living that really suits you, but this can take time. Try not to be pressured or influenced by others' opinions and actions. Try to make decisions about life choices in the cold light of day, so that you know how you want to respond if you end up in a tricky situation.

**Confront difficulties** – In a new environment it's easy to waste time worrying about things you don't understand or can't control. Don't be afraid to ask the Student Support team and many other agencies external to BIMM who are ready and willing to help you with any problem or query, big or small. Begin to see challenging situations as a chance to overcome something rather than a problem in your way.

**Be healthy** – Maintain a good diet, get adequate sleep and try to be active when you can; people are often happier if they are healthy. Register with a local doctor's surgery so that if you fall ill you can get the right care. If you are feeling stressed or sad, talk to the Student Support team, they will find you the right support; know when you need to get some extra help.

**Make a budget** – Work out how much money you have for the term, and how much you will have to spend on unavoidable costs like rent, food and bills. This way you will know how much you have left to spend on yourself. Doing this will avoid running out of money half way through the term, which can be very stressful.

**Find a Work/Life Balance** – As independent study is so important at University; it can sometimes be hard to give yourself time off. Give yourself regular breaks and occasional days off.

**Do work some of the time** – Being away from home and with so much to do in a new city, it can be easy to neglect your work and fall behind in the course. Make sure you find the time for your studies to avoid a stressful situation. If this doesn't come naturally, using a calendar or timetable to plot your study/practice hours can really help create a routine.

**Be yourself!** – People can't get to know and like you for who you really are if you don't try being your authentic self. Remember, it's okay if things aren't always okay too. There are so many people to potentially become friend.



# Faculty Information

---

## BIMM Brighton

---

38-42 Brunswick St West  
Hove  
East Sussex  
BN3 1EL

## Practice Facilities

---

At BIMM Institute Brighton we make teaching spaces available in BIMM House, West and North for students to book to rehearse, practice and create in for free, timetable permitting.

BIMM Institute Brighton has teamed up with Brighton Electric to offer BIMM students free rehearsal time in some of their fantastic facilities. Along with their state of the art rehearsal rooms and the teaching that we deliver out of their world class recording facilities, BIMM students love to hangout at Brighton Electric because of their on site venue and bar which is regularly used by Events Management students to put various shows and events on.

## Student Cards

---

You will be issued with a BIMM student card and lanyard at the start of your course. **It is compulsory that you wear your student card at all times when within BIMM.**

## Student Common Room

---

This is situated in BIMM West. There is a water cooler, vending machines, pool table and seating areas to relax and socialise in between lectures. We also have our very own coffee stand on the BIMM west yard, where Rory brews up the best coffee in Hove, whilst playing some of the coolest songs and artists at the BrewShack.





# IT and Technical resources

---

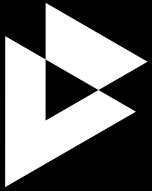
To help you navigate your way through your studies at the BIMM Institute we have supplied you with a number of technical resources which are at your disposal during your time with us. Whether you want email on the go, a place to store all your data or just want to ask for technical support on all the various offerings available, we have you covered:

- A downloadable offline copy of the latest version of office 365
- A terabyte of cloud data dedicated to you
- An online self service password management tool
- A virtual e- Library packed with resources to aid your studies
- A student IT Support channel
- A one stop dedicated student web page where all your resources are housed
- Mac Labs with an extensive software estate for qualifying courses

**Please help us help you during your time at the BIMM Institute by :**

- Choosing a complex password that you will remember that incorporates...
  - 8 characters or more
  - Uppercase, lowercase, numerals and symbols
  - Combine words, don't use one word
  - Make up a new word that's not in the dictionary!
- Always maintain software versions on your personal devices that match the software versions in the Mac Labs
- Backup your important work in the cloud so it's safe





BIMM  
INSTITUTE

Brighton

# We're Here To Help You

---

We are committed to helping you throughout your studies with us at BIMM Brighton and offer a wide range of support services designed to meet your academic and welfare needs, don't hesitate to speak to us whenever required.

[brighton@bimm.co.uk](mailto:brighton@bimm.co.uk)  
[studentsupportbrighton@bimm.co.uk](mailto:studentsupportbrighton@bimm.co.uk)

---

[bimm.co.uk](http://bimm.co.uk)

(UK) 01273 626 666  
(INT) 0044 8442 646 666

38-42 Brunswick St West  
Hove, East Sussex, BN3 1EL