

# Remote Audition Guidelines

CertHe - Popular Music Performance (Keys)

Please record all the videos below for your remote submission.

## Your prepared performance (1 video)

- Please record a song to perform that you feel comfortable with that lasts around 3 minutes. It can be an original or cover and performed solo or to a backing track.

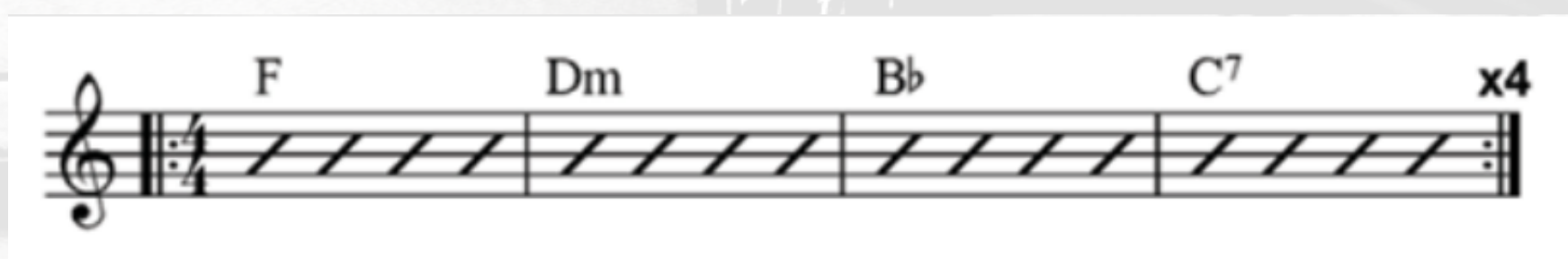
## Styles knowledge performance (1 video)

- Please record approximately 16 bars of two contrasting styles to play at any preferred tempo. Examples include, rock, blues, punk, soul, metal, reggae, funk etc.

## Instrument skills - technique (1 video)

We would like you to demonstrate the following:

- Major and minor scales
- Major, minor, major 7th, minor 7th, dominant 7th chords
- Create a keyboard part for the following chord sequence, varying the part with each repeat (using different chord voicing and/or melodic lines)



## Theory & Sight Reading (1 video)

- We would like you to work through the attached theory and sight-reading exercises in one recorded take. Please do not worry if your theory knowledge is limited. We offer a practitioner support scheme to those who need to brush up their theory in the first year of their course

## Making and submitting your videos

Your videos don't have to be recorded and edited professionally. Recordings using smart phones/tablets and laptops are suitable as long as the audio/video quality is clear and we can see a clear body shot.

Please upload your videos to a platform like youtube, dropbox or vimeo and send via one email to [submissions@bimm.co.uk](mailto:submissions@bimm.co.uk) using the submission form provided in your booking confirmation email.

If you have any questions about what to prepare please email [admissions@bimm.ac.uk](mailto:admissions@bimm.ac.uk)



BIMM  
INSTITUTE