

# Remote Audition Guidelines

BA (Hons) Popular Music Performance (Keys) & Music Production

## Your prepared performance (1 video)

- Please record a song to perform on keys that you feel comfortable with that lasts around 3 minutes. It can be an original or cover and performed solo or to a backing track.

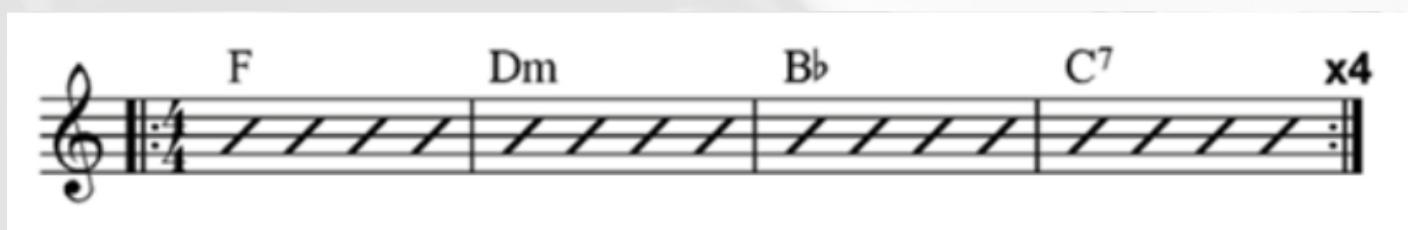
## Styles knowledge performance (1 video)

- Please record yourself performing approximately 16 bars of two contrasting styles at any tempo. Examples include rock, blues, punk, soul, metal, reggae etc.

## Instrument skills - technique (1 video)

We would like you to demonstrate the following:

- Major and minor scales
- Major, minor, major 7th, minor 7th, dominant 7th chords
- Create a keyboard part for the following chord sequence, varying the part with each repeat (using different chord voicing and/or melodic lines)



## Theory & Sight Reading (1 video)

- We would like you to work through the attached theory and sight-reading exercises in one recorded take. Please do not worry if your theory knowledge is limited. We offer a practitioner support scheme to those who need to brush up their theory in the first year of their course

## Music production demos (2 submissions)

Please submit two demos that are around 3 minutes long. The demos must have been programmed and mixed by yourself and any recorded elements managed by you (studio collabs are permitted). Please note, we do not expect you to have played any of the instruments recorded.

Your demo will be marked on:

- Quality of recorded material
- Quality of mix and arrangement
- Quality of sequenced material

## Making and submitting your videos/submission

Your videos don't have to be recorded and edited professionally. Recordings using smart phones/tablets and laptops are suitable as long as the audio/video quality is clear and we can see a clear body shot.

Please upload your videos and demos to a platform like youtube, dropbox or vimeo and send via one email to [submissions@bimm.ac.uk](mailto:submissions@bimm.ac.uk) using the submission form provided in your booking confirmation email.

If you have any questions about what to prepare please email [submissions@bimm.ac.uk](mailto:submissions@bimm.ac.uk)