

# Audition Guidelines

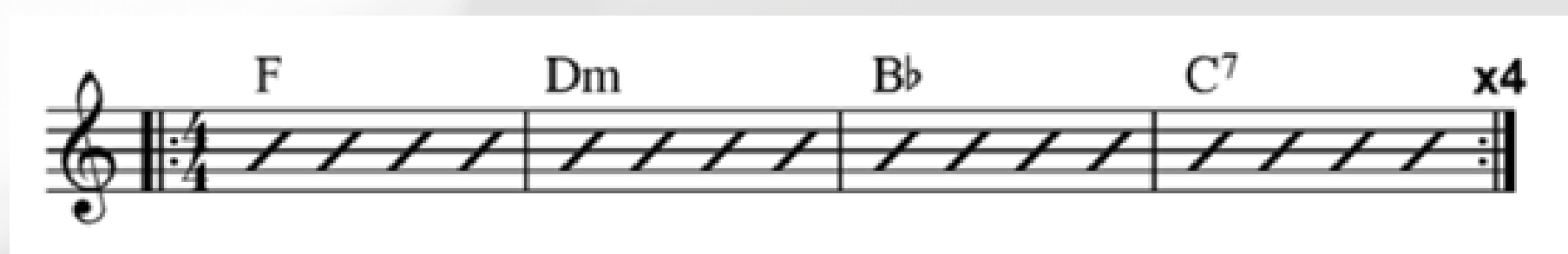
BA (Hons) Popular Music Performance (Keys)  
& Event Management

## What to expect

Auditions last one hour and are 1-1 on Zoom with a BIMM assessor. You will be asked some questions about yourself and will have the opportunity to ask any questions you may have about the course.

## What to prepare ahead of the day

- Please prepare a song to perform that you feel comfortable with that lasts around 3 minutes. It can be an original or cover and you can perform solo or to a backing track.
- If you wish to perform with a backing track, please ensure you have this prepared and set up in advance of your audition.
- Please prepare approximately 16 bars of two contrasting styles to play at any preferred tempo. Examples include, rock, blues, punk, soul, metal, reggae etc.
- Your assessor will work through some technical exercises with you such as:
  - Major and minor scales
  - Major, minor, major 7th, minor 7th, dominant 7th chords
  - Create a keyboard part for the following chord sequence, varying the part with each repeat (using different chord voicing and/or melodic lines)



- You will be asked to work through some sight reading and music theory-based exercises. Please do not worry if your theory knowledge is limited. We offer a practitioner support scheme to those who need to brush up their theory in the first year of their course
- Please prepare to answer questions about your experience, aspirations and interests in Event Management. You may be asked questions about what events and/or entrepreneurs relevant to the music industry inspire you. Your assessor will also explore what you hope to gain from your studies and discuss your career goals within the music/creative industries.

If you have any questions about what to prepare  
please email [submissions@bimm.ac.uk](mailto:submissions@bimm.ac.uk)



BIMM  
INSTITUTE