

Audition Guidelines

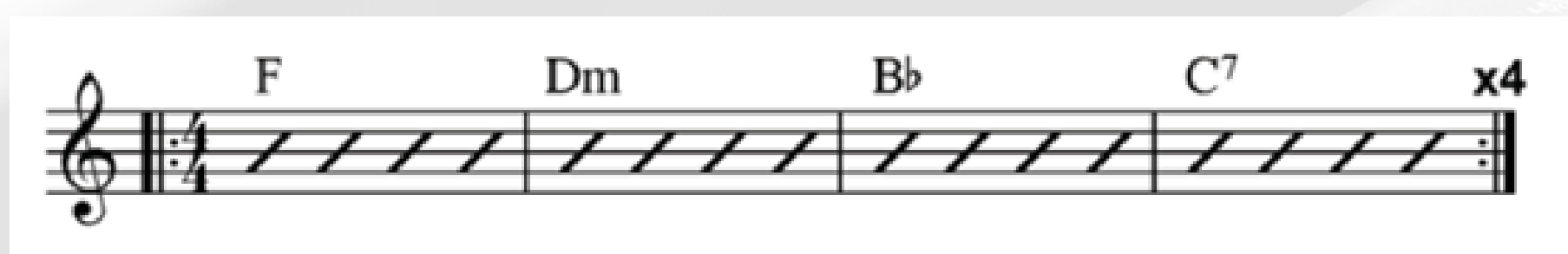
BA (Hons) Popular Music Performance (Keys)
& Event Management

What to expect

Auditions last one hour and are 1-1 with a BIMM assessor. You will be asked some questions about yourself and will have the opportunity to ask any questions you may have about the course.

What to prepare ahead of the day

- Please prepare a song to perform that you feel comfortable with that lasts around 3 minutes. It can be an original or cover and you can perform solo or to a backing track. We will have a keyboard available for you on the day. If you'd like to bring your own you are more than welcome to.
- If you are performing to a backing track, please ensure you bring this with you, or that it is available through a web browser, such as YouTube.
- Please prepare approximately 16 bars of two contrasting styles to play at any preferred tempo. Examples include, rock, blues, punk, soul, metal, reggae etc.
- Your assessor will work through some technical exercises with you such as:
 - Major and minor scales
 - Major, minor, major 7th, minor 7th, dominant 7th chords
 - Create a keyboard part for the following chord sequence, varying the part with each repeat (using different chord voicing and/or melodic lines)



- You will be asked to work through some sight reading and music theory-based exercises. Please do not worry if your theory knowledge is limited. We offer a practitioner support scheme to those who need to brush up their theory in the first year of their course
- Please prepare to answer questions about your experience, aspirations and interests within Event Management. You may be asked what events and/or entrepreneurs relevant to the music industry inspire you? Your assessor will also explore with you what you hope to gain from your studies and discuss your career goals.

If you have any questions about what to prepare please email submissions@bimm.ac.uk



BIMM
INSTITUTE