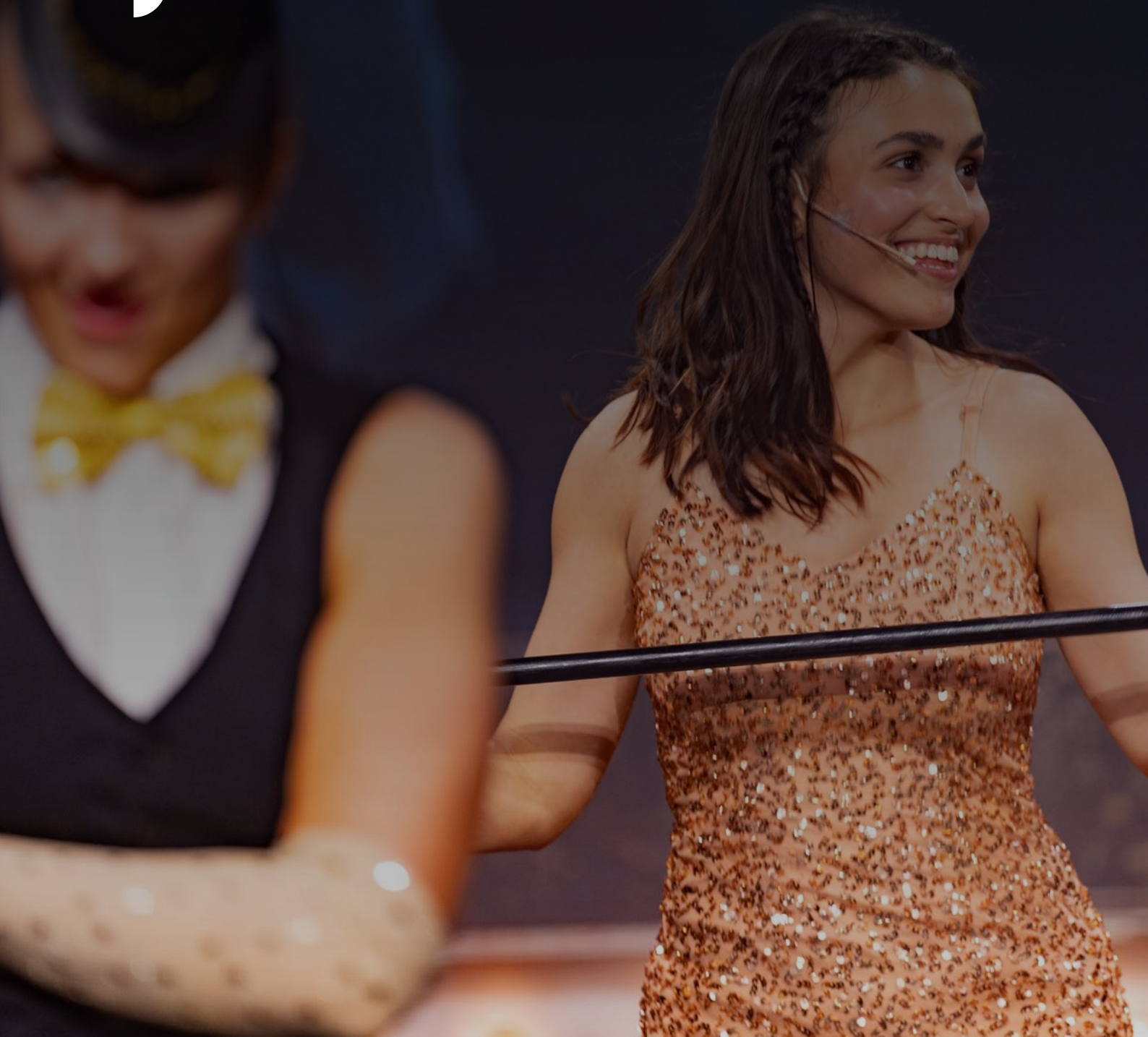




INSTITUTE FOR  
CONTEMPORARY  
THEATRE

**BA (Hons) Performing Arts  
Contemporary Musical Theatre**



---

# AUDITION GUIDELINES

## **BA (Hons) Performing Arts – Contemporary Musical Theatre**

On having been offered an audition at ICTheatre, we know you must be feeling a mixture of excitement and nerves, but please do not worry, we are here to help! We want you to do as well as you can on the day, because we would love you to come and train with us. Please carefully read the following guidelines.

Ahead of your Audition please submit your headshot to **[submissions@bimm.ac.uk](mailto:submissions@bimm.ac.uk)**

# **What to expect on the day**

---

### **THE AUDITION**

Your audition will consist of both group workshops and solo performance, below is what to expect and what you need to prepare.

### **VOCAL PERFORMANCE**

Please prepare 2 contrasting songs from the Musical Theatre repertoire, you may only be required to perform around 2 minutes of each piece, but we recommend you learn in full in case your assessor would like to see this on the day.

- You will need to bring along your sheet music and perform your chosen pieces in the original key.
- Please choose songs which allow you to act through them.
- Song should not be from a classical repertoire (this includes opera).
- We suggest selecting pieces that you feel confident performing and that showcase your vocal abilities.

### **DANCE WORKSHOP**

You will be required to take part in one 1-hour Dance workshop, when booking your audition please indicate if you would prefer to take part in the following:

- **Jazz Class**

The jazz class will include a warmup, technical combinations across the floor, and a short sequence within the style of jazz. This could be lyrical jazz, commercial jazz, Broadway jazz or other.

## **MONOLOGUE WORKSHOP**

The monologue workshop will take place with one or more members of the ICTheatre Acting Department. Candidates will be asked to perform any (or all) of the following:

- A contemporary monologue (written after 2000).
- This monologue must not be written by the candidate or an unknown playwright or taken from a film script.
- Monologues should be around 2 mins in length and certainly no longer than 3 minutes each.
- For the contemporary monologue we are looking for character driven text - based pieces that allow you to show your ability to convey a sense of believability. We therefore advise candidates to avoid Absurdist or Surrealist pieces. Like - wise we would suggest avoiding non-human characters that might require excessive demonstration.

## **INTERVIEW**

You will then take part in a short interview with members of our faculty where you will be asked to discuss your reasons for applying to our course, and why you would like to pursue a career in Musical Theatre.

This will be a friendly conversation where we can get to know you better and you can ask any questions you have about studying at ICTheatre.

## **WHAT TO WEAR**

Please wear comfortable clothing which allows for movement; footwear should be Jazz shoes or Trainers.

Make up should be kept to a minimum and long hair should be styled in a slick bun or ponytail. Jewelry must be removed before participating in the audition due to health and safety reasons.

## **WHAT TO BRING WITH YOU**

Light refreshments will be available on the day but please bring along your packed lunch, plenty of drinks and snacks.

Please ensure to bring along your Sheet music for your Vocal Performance, if you do not have access to a printer, please bring it along on a USB or be prepared to email it to our reception team on the day.

## **THE NEXT STEPS**

After you have completed your audition, we aim to email your audition outcome within two weeks.

Should you be successful your offer will be on UCAS Track and sent through email. You must accept on UCAS Track before the deadline date set by UCAS.

We look forward to meeting you on the day and wish you every success with your audition. In the meantime, if you have any concerns or questions, please do not hesitate to contact us on **admission@bimm.ac.uk**